

236 Ashlar Road | RICHMOND HILL

SCHOOLS

With excellent assigned and local public schools very close to this home, your kids will get a great education in the neighbourhood.



Crosby Heights PS

Designated Catchment School
Grades PK to 8
190 Neal Dr

Beverly Acres PS

Designated Catchment School
Grades 4 to 8
283 Neal Dr

Michaëlle Jean PS

Designated Catchment School
Grades 1 to 3
320 Shirley Dr

ÉS Norval-Morrisseau

Designated Catchment School
Grades 7 to 12
51 Wright St

Bayview SS

Designated Catchment School
Grades 9 to 12
10077 Bayview Ave

Académie de la Moraine

Designated Catchment School
Grades PK to 6
115 George St



PARKS & REC.

This home is located in park heaven, with 4 parks and a long list of recreation facilities within a 20 minute walk from this address.



Newkirk Park

Newkirk Rd and Taylor Mills Dr
S
2 mins

Crosby Park / Centennial Pool

161 Newkirk Rd
7 mins

Skopit Park

Neal Dr and Skopit Rd
7 mins

FACILITIES WITHIN A 20 MINUTE WALK

4 Playgrounds
1 Pool
6 Tennis Courts
1 Basketball Court
1 Ball Diamond
1 Sports Field
1 Community Centre
1 Splash Pad
1 Botanical Garden
2 Trails
1 Fitness/Weight Room

TRANSIT

Public transit is at this home's doorstep for easy travel around the city. The nearest street transit stop is only a 2 minute walk away and the nearest rail transit stop is a 21 minute walk away.

Nearest Rail Transit Stop
Richmond Hill GO

Nearest Street Level Transit Stop
Taylor Mills Dr / Perkins Rd



2 mins

SAFETY

With safety facilities in the area, help is always close by. Facilities near this home include a police station, a fire station, and a hospital within 2.53km.

Mackenzie Richmond Hill Hospital
10 Trench St

Fire Station
191 Major Mackenzie Drive West

Police Station
171 Major Mackenzie Drive West



Scan to view
more information!

www.236Ashlar.com



TEAM ZOLD

Call me for more information
on this beautiful home!



Shawn Zigelstein
Broker

289-GET-ZOLD

office 416.443.0300

65B West Beaver Creek Rd - 2nd Floor
Richmond Hill, ON L4B 1K4

Not intended to solicit those currently under contract with another brokerage.

TEAM ZOLD

Your Home • Your Life • Your Realtors

ROYAL LEPAGE
Signature
IND. OWNED & OPERATED BROKERAGE

Welcome Home To 236 Ashlar Road, A Rare Renovated 4+1 Bedroom Semi-Detached Home In Richmond Hill's Established Crosby Community

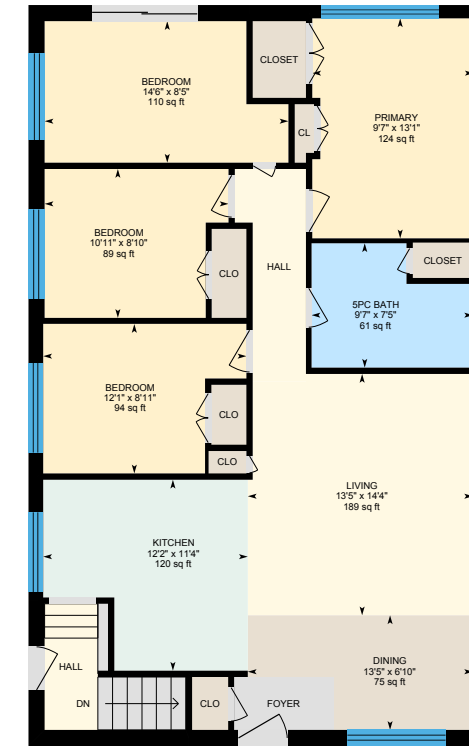
Set On A Large, Mature Lot, This Upgraded Property Blends Modern Comfort With Exceptional Convenience—Ideal For Families, Investors, Or Multi-Generational Living.

At The Heart Of The Home Is The Massive Gourmet Kitchen, Fully Redesigned With Premium Cabinetry, Extended Counters, Stainless Steel Appliances, And An Oversized Dining Area Perfect For Hosting. The Bright, Open Layout Is Enhanced By Newer Flooring, Pot Lights, Updated Windows, Roof, Furnace, AC And So Much More All Creating A Warm, Move-In-Ready Space. Four Generous Bedrooms On The Upper Level Offer Flexibility For Family Life, Work-From-Home Setups, Or Guest Accommodation. A Separate Side Entrance Leads To A Fully Finished Basement With An Additional Bedroom, Rec Room, And Bathroom—An Excellent Opportunity For A Future Secondary Suite.

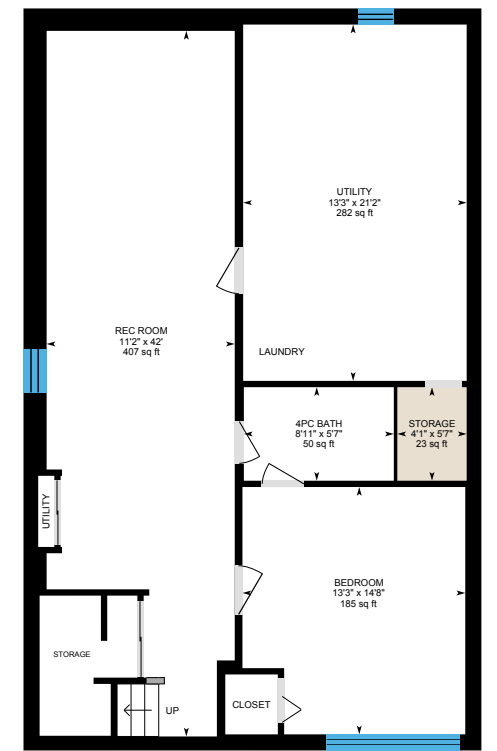
Located In One Of Richmond Hill's Most Convenient Neighbourhoods, You're Steps To Crosby Park, Playgrounds, Sports Fields, And Scenic Trails. Minutes To Top-Ranked Schools Including Bayview Secondary (IB Program), As Well As Richmond Hill GO Station, Yonge Street Amenities, Community Centres, Shopping, Dining, And More. Every Major Update Is Already Done—Simply Move In And Enjoy. A Beautifully Renovated Home In A Thriving, Family-Friendly Area—This Is A Rare Opportunity You Won't Want To Miss.

Prospective purchasers should satisfy themselves as to the accuracy of the information contained in this feature sheet. All measurements are approximate. The statements contained herein are based on sources which we believe are reliable, but for which we assume no responsibility.

236 Ashlar Road



1st Floor
Exterior Area 1209.73 sq ft



Basement (Below Grade)
Exterior Area 159.41 sq ft



INCLUDED:

All Existing Stainless Steel Appliances: KitchenAid Gas Slide-In Stove, KitchenAid Built-In Microwave, LG Built-In Dishwasher, Whirlpool French Door Fridge, LG Grey Washer and Dryer, Frigidaire White Fridge and GE White Chest Freezer in Basement, Built-In Shelves and Closet Organizers, Furnace, Electric Hot Water Tank, AC, Garden Shed, Awning.

Property Taxes: \$4,952.71 / 2025

Lot: 41.00 ft x 100.00 ft