

WELCOME TO

47 William Curtis Circle

www.47WilliamCurtis.com



Sarah Norris
Sales Representative



TEAM **ZOLD**

Your Home • Your Life • Your Realtors

Working For You!

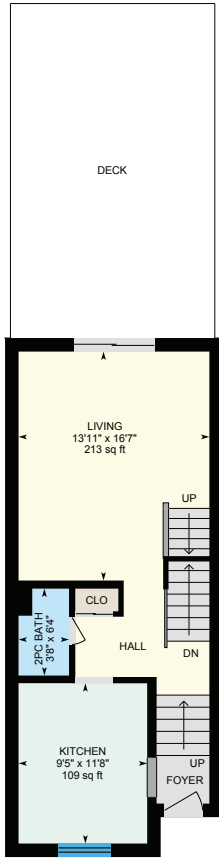
905.731.2000
www.teamzold.com



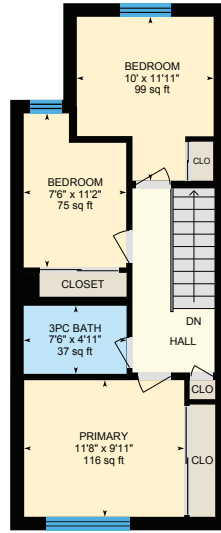
Shawn Zigelstein
Broker



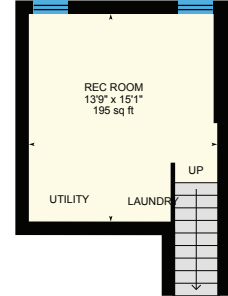
47 William Curtis Circle, Newmarket



Main Floor



2nd Floor



Basement (Below Grade)





PUBLIC SCHOOLS

Your neighbourhood is part of a community of Public Schools offering Elementary, Middle, and High School programming.

Bogart PS

Designated Catchment School
Grades PK to 8
855 College Manor Dr

Newmarket HS

Designated Catchment School
Grades 9 to 12
505 Pickering Crescent

Mazo De La Roche PS

Designated Catchment School
Grades 2 to 8
860 Arnold Crescent

ÉS Norval-Morrisseau

Designated Catchment School
Grades 7 to 12
51 Wright St

CATHOLIC SCHOOLS

Your neighbourhood is part of a community of Catholic Schools offering Elementary, Middle, and High School programming.

Notre Dame Catholic ES

Grades PK to 8 (Assigned)
715 Kingsmere Ave

ÉÉC Saint-Jean

Grades PK to 6 (Assigned)
90 Walton Dr

St. Maximilian Kolbe HS

Grades 9 to 12 (Assigned)
278 Wellington St E

ÉSC Renaissance

Grades 7 to 12 (Assigned)
700 Bloomington Rd

PRIVATE SCHOOLS

The private schools nearest to you are:



Innova Academy

Grades PK to 8
1000 Gorham St

Newmarket Montessori & Christian Academy

Grades PK to 8
1140 Gorham St

Newmarket & District Christian Academy

Grades K to 8
221 Carlson Dr

Pickering College

Grades PK to 12
16945 Bayview Ave

PARKS & REC.

This home is located in park heaven, with 4 parks and a long list of recreation facilities within a 20 minute walk from this address.



Charles Boyde Park

303 Crowder Blvd



4 min



Drew Doak Park

87 Carlson Dr



16 min



Magna Centre

800 Mulock Drive



17 min



FACILITIES WITHIN A 20 MINUTE WALK

- | | |
|---------------------|--------------------|
| 2 Pools | 3 Playgrounds |
| 4 Sports Fields | 2 Tennis Courts |
| 2 Basketball Courts | 2 Ball Diamonds |
| 4 Rinks | 1 Community Centre |
| 1 Track | 3 Trails |
| 1 Multi-Use Pad | 1 Gym |

TRANSIT

Public transit is at this home's doorstep for easy travel around the city. The nearest street transit stop is only a 2 minute walk away and the nearest rail transit stop is a 33 minute walk away.



Nearest Rail Transit Stop

Newmarket GO



Nearest Street Level Transit Stop

Leslie St / Crowder Blvd



2 min

SAFETY

With safety facilities in the area, help is always close by. Facilities near this home include a fire station, a police station, and a hospital within 2.08km.



Southlake Regional Health Centre

596 Davis Dr



Fire Station

984 Gorham St



Police Station

240 Prospect Street



Disclaimer: These materials have been prepared for shawn@teamzold.com and are not intended to solicit buyers or sellers currently under contract with a brokerage. By accessing this information you have agreed to our terms of service, which are hereby incorporated by reference. This information may contain errors and omissions. You are not permitted to rely on the contents of this information and must take steps to independently verify its contents with the appropriate authorities (school boards, governments etc.). As a recipient of this information, you agree not to hold us, our licensors or the owners of the information liable for any damages, howsoever caused.

*****BRAND NEW 2021 RENOVATION THROUGHOUT! MOVE IN, PUT YOUR FEET UP, AND JUST RELAX*****

This 3-bedroom home has been completely renovated inside (2021) from top to bottom, so there's nothing more for you to do, aside from move in!

These renovations also include all new appliances, new laminate and tile floors, granite counters, and walk-out to a spacious, fully fenced, and private backyard deck.

All New Appliances, Furnace and A/C. The garage is oversized with plenty of room for storage.

This highly desirable and convenient neighbourhood is close to all amenities including excellent schools, hospital, shopping, restaurants, YRT Transit, the GO Station and only a 4 minute drive to Hwy 404.

Simply unpack and enjoy your new home!

Extras:

Included: All Electrical Light Fixtures, And Window Coverings, All Existing New (2021) Kitchen Appliances: Frigidaire Stainless Steel Stove, LG Stainless Steel Rangehood/Microwave, Hi-Sense Stainless Steel Refrigerator, Samsung Stainless Steel Dishwasher; New (2021) LG Washer & Dryer, New Lennox Furnace And A/C.

Rental: Hot Water Tank.

Maintenance Fee: \$150.00 | Taxes: \$2,780.46/2022

Royal LePage Your Community Realty Brokerage does not warrant or guarantee the information in this feature sheet.