

9600 Yonge St. #209 B



ROYAL LEPAGE
CHAIRMAN'S CLUB
NATIONAL TOP 1%
2012-2019

Shawn Zigelstein
Sales Representative

TEAM **ZOLD**

Your Home • Your Life • Your Realtors

Working For You!

905.731.2000
www.teamzold.com

Your **Community**[™]
REALTY

ROYAL LEPAGE

BROKERAGE INDEPENDENTLY OWNED & OPERATED





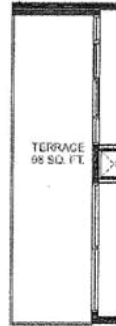
Grand Palace

CONDOMINIUMS

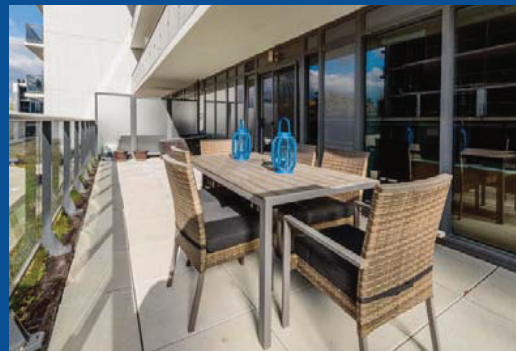
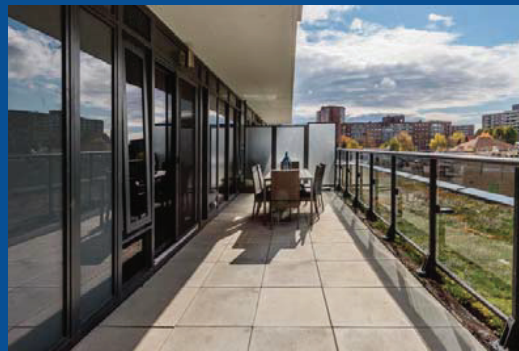
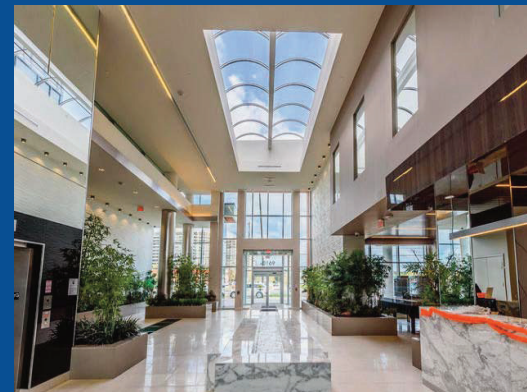
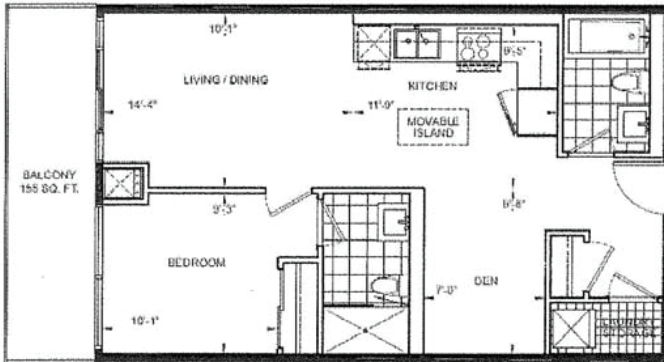
SCHEDULE "A"

SUITE TYPE 24

A: 678 sq ft / 682 sq ft (UNIT 26 L2, UNIT 27 L3 & L4)
one bedroom + den + terrace



BLDG B - UNIT 25 L2



Amazing Grand Palace 1+1 Condo With 2 Full Bathrooms And Over-sized Personal Terrace

This Very Rare Great Unit Has To Been Seen To Be Appreciated. One Of The Few Units In The Complex That Has The Extra Bathroom And A Great Entertaining Terrace For Your Company To Enjoy. This Unit Features 9 Foot Ceilings, Gourmet Kitchen With Stone Counters, Hardwood Floors And A Wonderful Layout. This West Facing Suite Also Includes Parking And A Locker To Store Your Extras.

Maintenance Fees: \$453.27 | Taxes: 2019/\$2,397.20