

95 Roseheath Drive

www.95roseheath.com



ROYAL LEPAGE
CHAIRMAN'S CLUB
NATIONAL TOP 1%
2012-2019

Shawn Zigelstein
Broker

TEAM **ZOLD**

Your Home • Your Life • Your Realtors

Working For You!

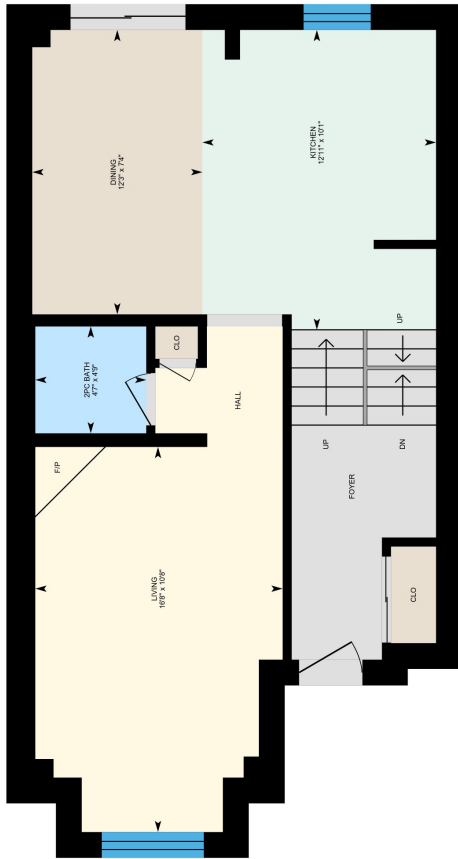
905.731.2000
www.teamzold.com

YOUR
Community
REALTY

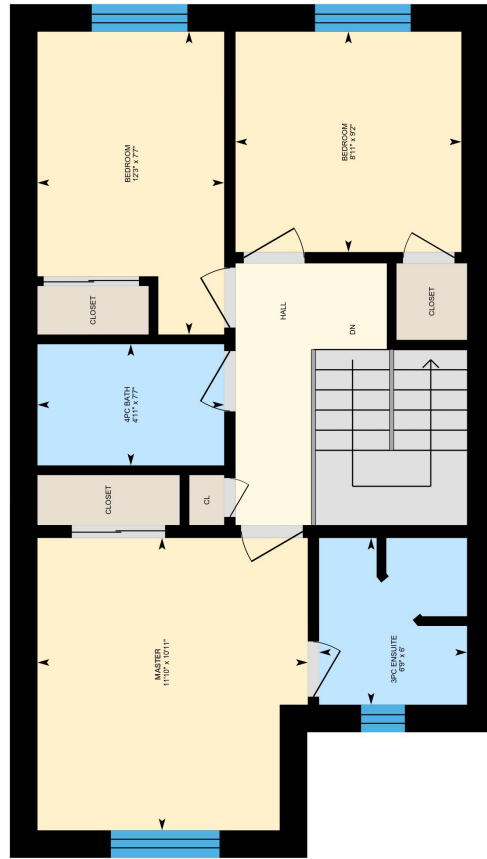
ROYAL LEPAGE

BROKERAGE INDEPENDENTLY OWNED & OPERATED

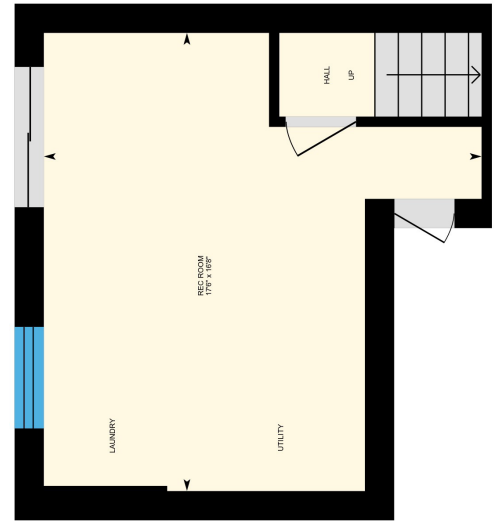
1st Floor



2nd Floor



Basement





PUBLIC SCHOOLS

Your neighbourhood is part of a community of Public Schools offering Elementary, Middle, and High School programming.

Michael Cranny ES

Designated Catchment School
Grades PK to 8
155 Melville Ave

ÉÉ La Fontaine

Designated Catchment School
Grades PK to 6
10110 Islington Ave

ÉS Norval-Morriseau

Designated Catchment School
Grades 7 to 12
51 Wright St

Julliard PS

Designated Catchment School
Grades 2 to 8
61 Julliard Dr

Maple HS

Designated Catchment School
Grades 9 to 12
50 Springside Rd

ALTERNATIVE & SPECIAL SCHOOLS

Nearby alternative and special education schools include:

St Luke Catholic Learning Centre

Grades 9 to 12
8787 Weston Rd



CATHOLIC SCHOOLS

Your neighbourhood is part of a community of Catholic Schools offering Elementary, Middle, and High School programming.

Divine Mercy Catholic ES

Grades PK to 8 (Assigned)
251 Melville Ave

ÉÉ Le-Petit-Prince

Grades PK to 6 (Assigned)
79 Avro Rd

St Joan of Arc Catholic HS

Grades 9 to 12 (Assigned)
1 St Joan of Arc Ave

Cardinal Carter Catholic SS

Grades 9 to 12 (Assigned)
210 Old Bloomington Rd

PRIVATE SCHOOLS

The private schools nearest to you are:



Roots Private School

Grades PK to 6
10195 Keele St

The Hill Academy

Grades 9 to 12
2600 Rutherford Rd

Evergreen Leadership Academy

Grades PK to 8
2701 Rutherford Rd

North Hill Private School

Grades PK to 3
9555 Weston Rd

PARKS & REC.

This home is located in park heaven, with 4 parks and a long list of recreation facilities within a 20 minute walk from this address.



Kelso Parkette

180 Kelso Crescent



2 min

Crieff Parkette

45 Crieff Ave



3 min

Melville Park

201 Melville Ave



5 min

FACILITIES WITHIN A 20 MINUTE WALK

4 Playgrounds
2 Tennis Courts
1 Splash Pad
3 Sports Fields
4 Basketball Courts
1 Ball Diamond
2 Multi-Use Pads

TRANSIT

Public transit is at this home's doorstep for easy travel around the city. The nearest street transit stop is only a minute walk away and the nearest rail transit stop is a 29 minute walk away.

 **Nearest Rail Transit Stop**
Maple GO

 **Nearest Street Level Transit Stop**
Melville Av / Kelso Cr



1 min

SAFETY

With safety facilities in the area, help is always close by. Facilities near this home include a fire station, a police station, and a hospital within 6.95km.

 **Mackenzie Richmond Hill Hospital**
10 Trench St

 **Fire Station**
40 Eagleview Heights

 **Police Station**
2700 Rutherford Road

CONVENIENCE

This home is located near everyday amenities to make your daily errands easier.

 **Coffee**

 **Gym**

 **Grocery**

 **Gas Station**



HoodQ

Disclaimer: These materials have been prepared for show@realestate.com and are not intended to solicit buyers or sellers currently under contract with a brokerage. By accessing this information you have agreed to our terms of service, which are hereby incorporated by reference. This information may contain errors and omissions. You are not permitted to rely on the contents of this information and must take steps to independently verify its contents with the appropriate authorities (school boards, governments etc.). As a recipient of this information, you agree not to hold us, our licensors or the owners of the information liable for any damages, howsoever caused.

WONDERFULLY UPDATED AND LOVED FREEHOLD TOWNHOME

This Great Home In Prime Maple Is An Amazing Opportunity To Get Into An Amazing Area With Highly Rated Schools, Brand New State Of The Art Hospital, Go Train And Hwy 400 Close By. The Layout Of This Home Is Super Functional, Main Floor Family Room, Hardwood Floors, New Windows, Completely Redone Backyard, Facing And Exterior Trim Have All Been Updated As Well.Come And Visit Today,This Is An Amazing Home!

Includes All Appliances (Stainless Steel GE Flat Top Stove, Stainless Steel Frigidaire Fridge, Stainless Steel Bosch BI Dishwasher, White LG Washer, Frigidaire White Dryer) Furnace, Air Conditioner, Humidifier, Oak Staircase, Hardwood Floors, Gas Fireplace, Extra Large Deck, Garage Door Opener And Remote & Hot Water Tank.

Lot Size: 18.43 x 95.47 feet Taxes: \$3,086.80/2020

Royal LePage Your Community Realty Brokerage does not warrant or guarantee the information in this feature sheet.