

125 Village Green Square #905

www.125VillageGreen.com



Shawn Zigelstein
Broker



ROYAL LEPAGE
CHAIRMAN'S CLUB
NATIONAL TOP 1%
2012-2019

TEAM ZOLD

Your Home • Your Life • Your Realtors

Working For You!

905.731.2000
www.teamzold.com

Your Community
REALTY
ROYAL LEPAGE
BROKERAGE INDEPENDENTLY OWNED & OPERATED



Vanessa Oliveira
Sales Representative

125 Village Green Square #905





125 Village Green Square #905

PUBLIC SCHOOLS

Your neighbourhood is part of a community of Public Schools offering Elementary, Middle, and High School programming.

Inglewood Heights Junior Public School

Designated Catchment School
Grades PK to 6
45 Dempster St

É Éléonore-Rièse

Designated Catchment School
Grades PK to 6
339 Alton Towers Cir

John Buchan Senior Public School

Designated Catchment School
Grades 7 to 8
2450 Birchmount Rd

Stephen Leacock Collegiate Institute

Designated Catchment School
Grades 9 to 12
2450 Birchmount Rd

És Étienne-Brûlé

Designated Catchment School
Grades 7 to 12
300 Banbury Rd

Other Local Schools

Jean Augustine Girls' Leadership Academy

Grades 4 to 8
35 Glendower Circuit

ALTERNATIVE & SPECIAL SCHOOLS

Nearby alternative and special education schools include:

Sir William Osler High School

Grades 9 to 12
1050 Huntingwood Dr

Alternative Scarborough Education 1

Grades 11 to 12
60 Brimorton Dr

Your neighbourhood is part of a community of Catholic Schools offering Elementary, Middle, and High School programming.

St. Bartholomew Catholic School

Grades PK to 8 (Assigned)
51 Heather Rd

ÉÉC Saint-Jean-de-Lalande

Grades PK to 8 (Assigned)
500 Sandhurst Cir

ÉSC Père-Philippe-Lamarche

Grades 7 to 12 (Assigned)
2850 Eglinton Ave E

Our Lady of Wisdom Catholic School

Grades PK to 8
10 Japonica Rd

PRIVATE SCHOOLS

The private schools nearest to you are:

Ellington Montessori School

Grades PK to 8
40 Cowdray Court

Enquiring Minds Montessori School

Grades PK to 8
24 Progress Ave

Maple Leaf Collegiate

Grades 9 to 12
4002 Sheppard Ave E

Canada International College

Grades 9 to 12
2347 Kennedy Road #505



PARKS & REC.

This home is located in park heaven, with 4 parks and a long list of recreation facilities within a 20 minute walk from this address.

Collingwood Park

30 Collingwood St



7 min

Inglewood Heights Park

91 Allanford Rd



10 min

Glamorgan Park

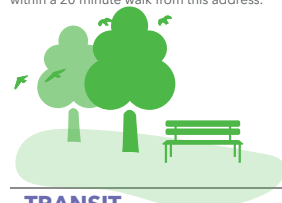
50 Antrim Cres



8 min

FACILITIES WITHIN A 20 MINUTE WALK

5 Playgrounds
3 Tennis Courts
1 Splash Pad
1 Trail
3 Sports Fields
3 Basketball Courts
2 Ball Diamonds
1 Multi-Use Pad



TRANSIT

Public transit is at this home's doorstep for easy travel around the city. The nearest street transit stop is only a 5 minute walk away and the nearest rail transit stop is a 13 minute walk away.

Nearest Rail Transit Stop

Agincourt GO



13 min

Nearest Street Level Transit Stop

Kennedy Rd At Village
Green Sq North Side



5 min

SAFETY

With safety facilities in the area, help is always close by. Facilities near this home include a fire station, a police station, and a hospital within 3.58km.

Scarborough Health Network - Birchmount Campus

3030 Birchmount Rd

Fire Station

2340 Birchmount Rd

Police Station

242 Milner Ave

CONVENIENCE

This home is located near everyday amenities to make your daily errands easier.

Coffee



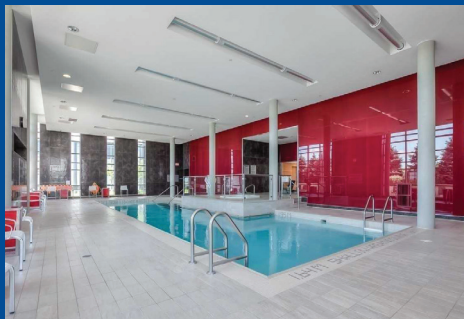
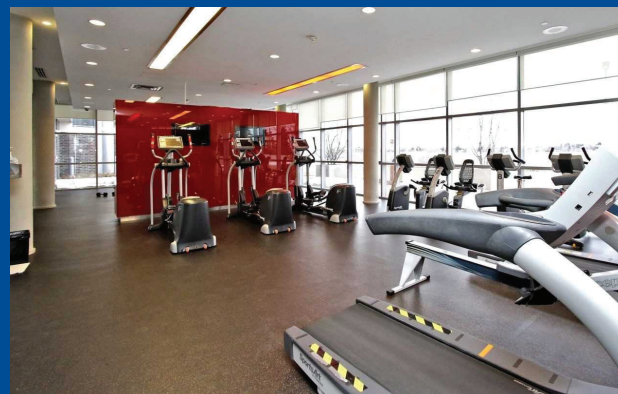
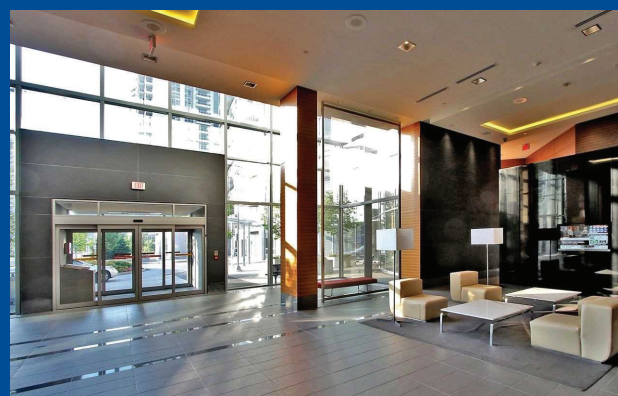
Gym



Grocery



Gas Station



FANTASTIC 2 BEDROOM CONDO IN AWARD WINNING GREEN BUILDING

This Stunning 2 Bedroom & 2 Bathroom Condo Is Located In A Tridel Eco Smart Building. Enjoy Unobstructed South-West Views Of Toronto & Incredible West Sunsets. Lovely Open Concept Living Room & Dining Room With Walk-Out To Balcony. Upgraded With Laminate Floors, Granite Counter Tops, Ceramic Backsplash And Custom-Made Overhanging Cabinets! Excellent Location Close To 401, TTC, Scarborough Town Centre, Agincourt Mall & Walking Distance To Kennedy Commons. Amazing Value With Low Maintenance Fees And State Of The Art Amenities.

Extras: All Electric Light Fixtures, All Window Coverings, All Existing Appliances: Whirlpool Black Built-In Dishwasher, Whirlpool Black Fridge, Whirlpool Black Microwave Hood Fan, Whirlpool Black Electric Stove, Whirlpool Front Load White Washer, Whirlpool Front Load White Dryer, Parking and Locker.

Main Fees: \$433.00/month ~ Taxes: \$1922.70/2020

Royal LePage Your Community Realty does not warrant or guarantee the information on this feature sheet.