

830 Lawrence Ave W Unit 1506



ROYAL LEPAGE
CHAIRMAN'S CLUB
NATIONAL TOP 1%
2012-2019

Shawn Zigelstein
Broker

TEAM **ZOLD**

Your Home • Your Life • Your Realtors

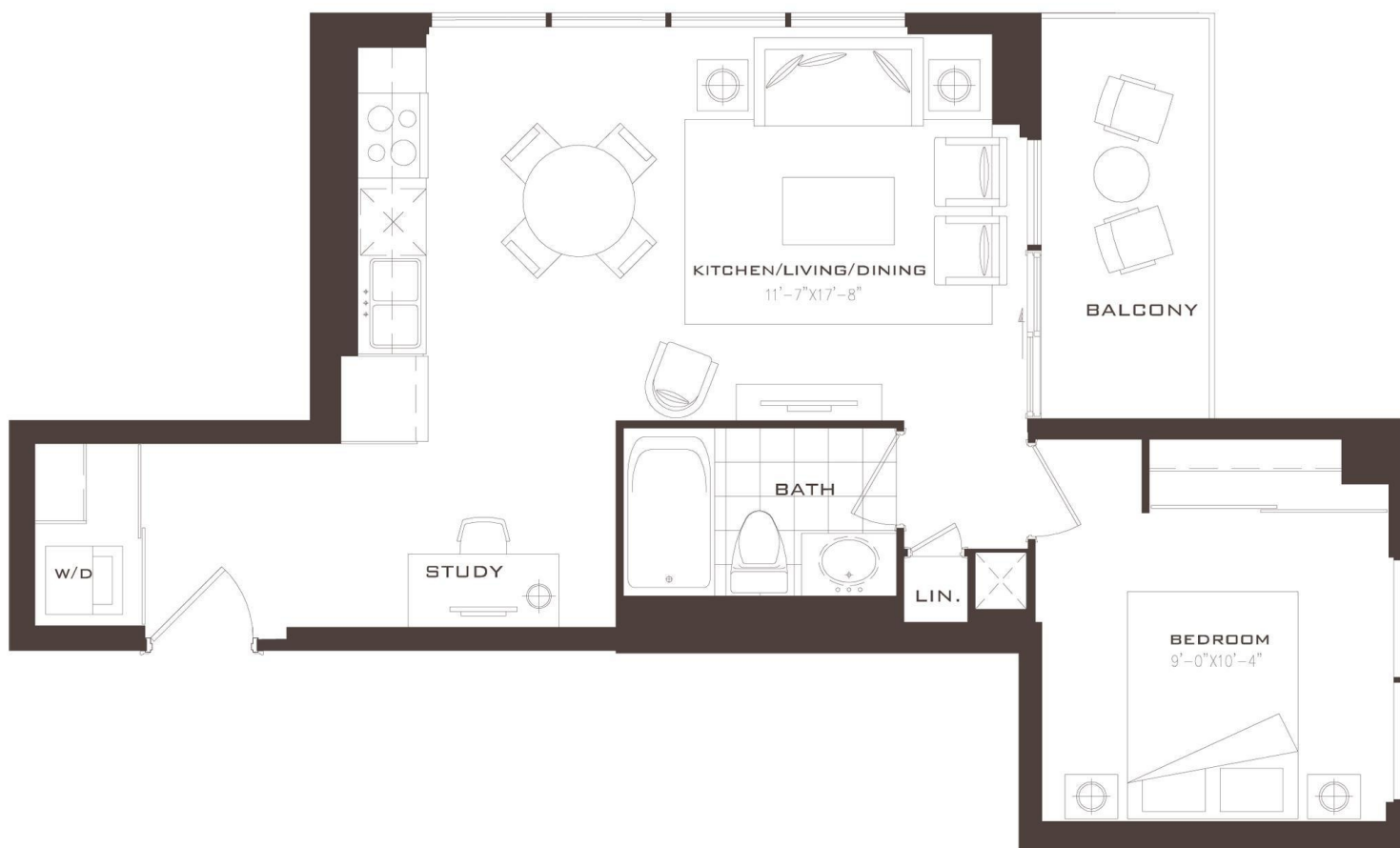
Working For You!

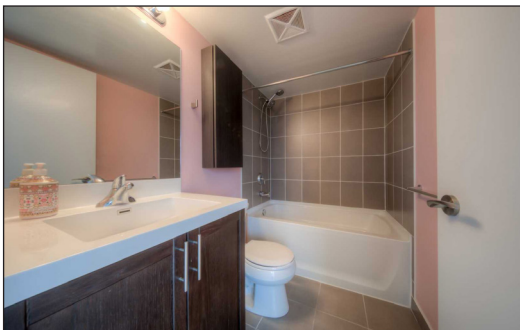
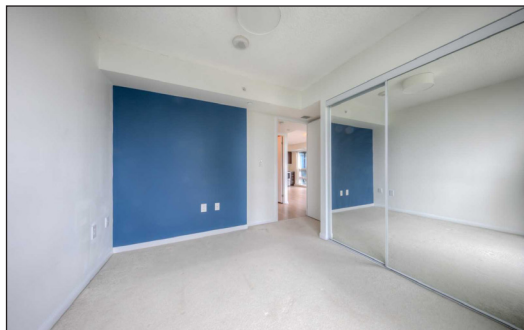
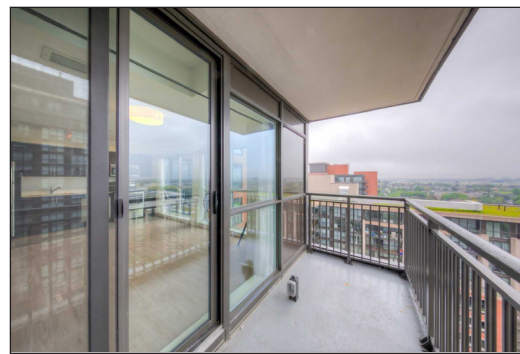
905.731.2000
www.teamzold.com

YOUR
Community
REALTY™

ROYAL LEPAGE

BROKERAGE INDEPENDENTLY OWNED & OPERATED





PUBLIC SCHOOLS

Your neighbourhood is part of a community of Public Schools offering Elementary, Middle, and High School programming.

Flemington Public School

Designated Catchment School
Grades PK to 5
10 Flemington Rd

É Élé Mathieu-da-Costa

Designated Catchment School
Grades PK to 6
116 Cornelius Pkwy

Lawrence Heights Middle School

Designated Catchment School
Grades 6 to 8
50 Highland Hill

John Polanyi Collegiate Institute

Designated Catchment School
Grades 9 to 12
640 Lawrence Ave W

ÉS Étienne-Brûlé

Designated Catchment School
Grades 7 to 12
300 Banbury Rd

ALTERNATIVE & SPECIAL SCHOOLS

Nearby alternative and special education schools include:

Magnificent Minds

Grades K to 8
37 Southbourne Avenue

Magnificent Minds

Grades K to 8
37 Southbourne Avenue



CATHOLIC SCHOOLS

Your neighbourhood is part of a community of Catholic Schools offering Elementary, Middle, and High School programming.

St. Charles Catholic School

Grades PK to 8 (Assigned)
50 Claver Ave

ÉEC Saint-Noël-Chabanel-Toronto

Grades PK to 6 (Assigned)
30 Thistle Down Boulevard

ÉSC Monseigneur-de-Charbonnel

Grades 7 to 12 (Assigned)
110 Drewry Ave

Dante Alighieri Academy

Grades 9 to 12
60 Playfair Ave

PRIVATE SCHOOLS

The private schools nearest to you are:

Fieldstone King's College School

Grades 9 to 12
2999 Dufferin Street

Fieldstone Day School

Grades PK to 8
2999 Dufferin Street

Sterling Hall School

Grades K to 8
99 Cartwright Avenue

Yeshiva Gedolah of Toronto

Grades 9 to 12
567 Lawrence Ave W

PARKS & REC.

This home is located in park heaven, with 4 parks and a long list of recreation facilities within a 20 minute walk from this address.



Dane Parkette

21 Dane Ave



1 min

Wenderly Park

89 Wenderly Dr



8 min

Caledonia Park

1141 Caledonia Rd



9 min

FACILITIES WITHIN A 20 MINUTE WALK

- 1 Pool
- 2 Playgrounds
- 3 Sports Fields
- 8 Volleyball Courts
- 2 Ball Diamonds
- 1 Rink
- 1 Community Centre
- 1 Gym
- 2 Lawn
- 1 Outdoor Dry Pad
- Bowling/Bocces

TRANSIT

Public transit is at this home's doorstep for easy travel around the city. The nearest street transit stop is only a minute walk away and the nearest rail transit stop is a 11 minute walk away.

Nearest Rail Transit Stop

Lawrence West Station



11 min

Nearest Street Level Transit Stop

Dufferin St At Lawrence Ave West North Side



1 min

SAFETY

With safety facilities in the area, help is always close by. Facilities near this home include a fire station, a police station, and a hospital within 2.91km.

Humber River Hospital

1235 Wilson Ave

Fire Station

476 Lawrence Ave W

Police Station

1435 Eglinton Ave W

CONVENIENCE

Daily errands are quick and easy in this neighbourhood, with 4 amenities within a 8 minute walk from this home.

Coffee



Gym



Grocery



Gas Station



Disclaimer: These materials have been prepared for show@hoodq.com and are not intended to solicit buyers or sellers currently under contract with a brokerage. By accessing this information you have agreed to our terms of service, which are hereby incorporated by reference. This information may contain errors and omissions. You are not permitted to rely on the contents of this information and must take steps to independently verify its contents with the appropriate authorities (school boards, governments etc.). As a recipient of this information, you agree not to hold us, our licensors or the owners of the information liable for any damages, howsoever caused.

***TREVISIO II AMAZING BRIGHT AND OPEN CONCEPT LAYOUT**

Ready For You To Move In And Enjoy. With A Beautiful Neutral Decor, This High Demand Floorplan Will Give You Everything You Need With Space And Functionality. Quiet Neighbors, A Nice Open Balcony To Sit and Watch The City On Those Nice Fall Evenings. This Luxury Complex Is One Of A Kind With So Many Fantastic Amenities Including Pool, Hot Tub, Exercise Room, Theatre, Billiards Room, 24 Hour Concierge And More.

EXTRAS: Stainless Steel Appliances (Fridge, Stove, BI D/W and Microwave),Washer, Dryer, Window Coverings, All Electrical Light Fixture's, Parking, And Is a Close Walk To The TTC Subway, Yorkdale, Parks, Trails, Schools And Restaurants

Maintenance Fees - \$393.36/month

Taxes: \$2,070.73/ 2020