

WELCOME TO

802 - 185 Bonis Avenue

www.TeamZold.com



Vanessa Resendes
Sales Representative



TEAM **ZOLD**

Your Home • Your Life • Your Realtors

Working For You!

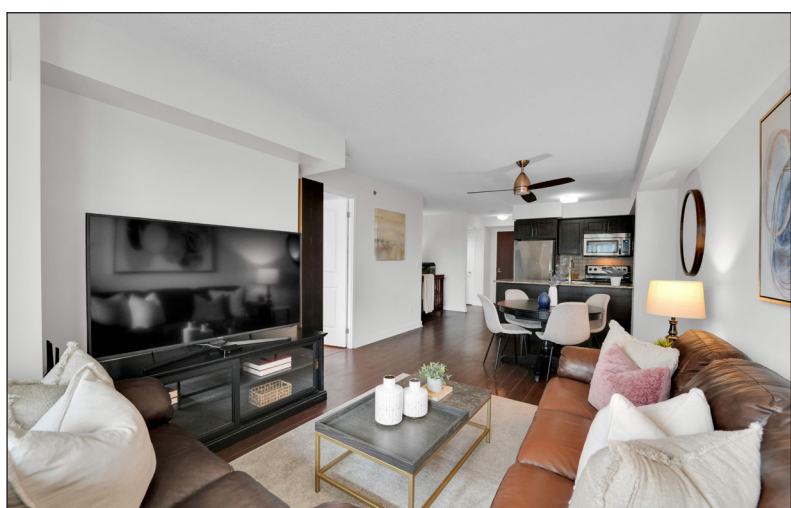
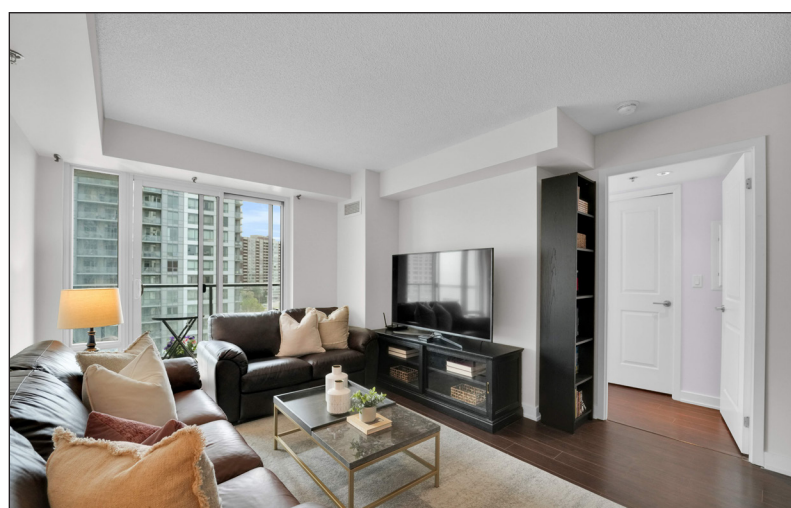
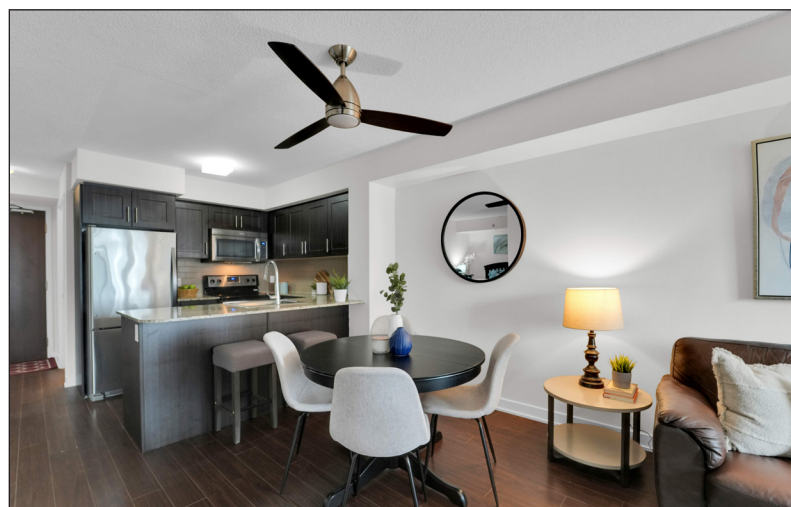
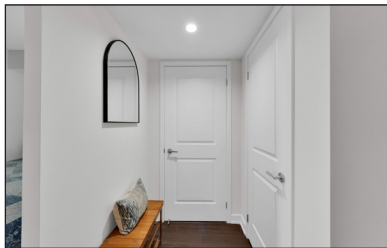
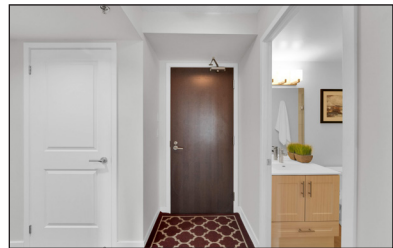
905.731.2000
www.teamzold.com

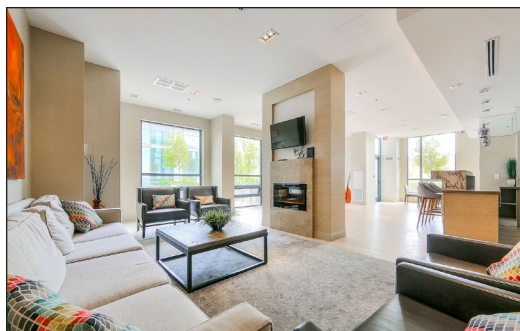
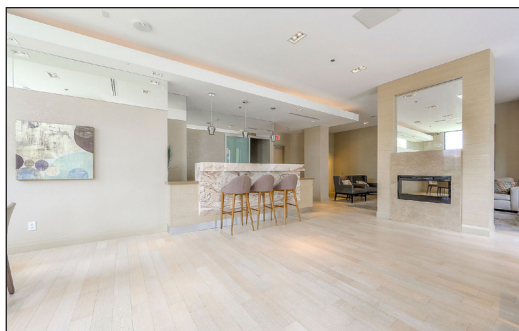
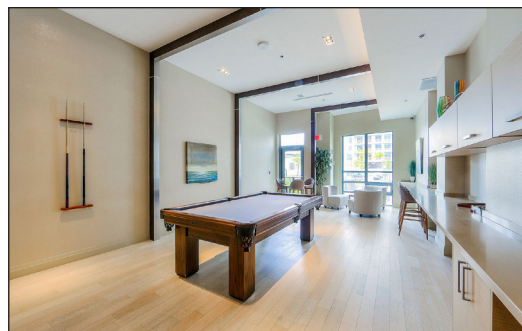
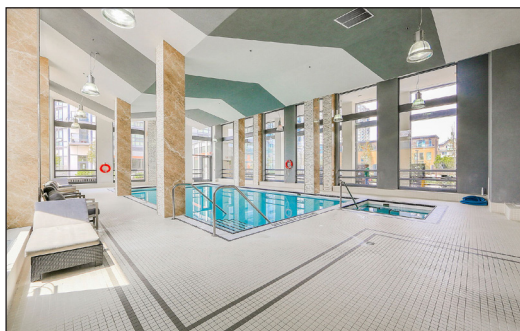
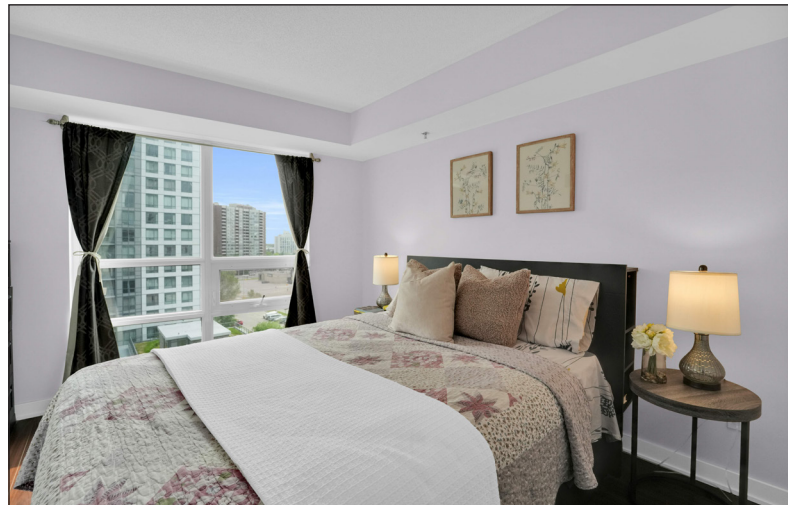


ROYAL LEPAGE
CHAIRMAN'S CLUB
NATIONAL
TOP 1%
LIFETIME MEMBER



Shawn Zigelstein
Broker





802-185 Bonis Avenue, Toronto

PUBLIC SCHOOLS

Your neighbourhood is part of a community of Public Schools offering Elementary, Middle, and High School programming.

Tam O'Shanter Junior Public School

Designated Catchment School
Grades PK to 6
21 King Henrys Blvd

ÉE Laure-Rièse

Designated Catchment School
Grades PK to 6
339 Alton Towers Cir

John Buchan Senior Public School

Designated Catchment School
Grades 7 to 8
2450 Birchmount Rd

Stephen Leacock Collegiate Institute

Designated Catchment School
Grades 9 to 12
2450 Birchmount Rd

ÉS Étienne-Brûlé

Designated Catchment School
Grades 7 to 12
300 Banbury Rd

Other Local Schools Broadlands Public School

Grades K to 5
106 Broadlands Blvd

ALTERNATIVE & SPECIAL SCHOOLS

Nearby alternative and special education schools include:

Sir William Osler High School

Grades 9 to 12
1050 Huntingwood Dr

Msgr Fraser College (Midland Campus)

Grades 9 to 12
2900 Midland Ave

CATHOLIC SCHOOLS

Your neighbourhood is part of a community of Catholic Schools offering Elementary, Middle, and High School programming.

ÉEC Sainte-Madeleine

Grades PK to 6
1 Ness Dr

Holy Spirit Catholic School

Grades PK to 8
3530 Sheppard Ave E

ÉSC Monseigneur-de-Charbonnel

Grades 7 to 12
110 Drewry Ave

Francis Libermann Catholic High School

Grades 9 to 12
4640 Finch Ave E

PRIVATE SCHOOLS

The private schools nearest to you are:

Canada International College

Grades 9 to 12
2347 Kennedy Road #505

Maple Leaf Collegiate

Grades 9 to 12
4002 Sheppard Ave E

Agincourt Montessori School

Grades PK to 3
2575 Midland Avenue

Blue Gene Education

Grades 9 to 12
11 Glen Watford Drive

PARKS & REC.

This home is located in park heaven, with 4 parks and a long list of recreation facilities within a 20 minute walk from this address.

Ron Watson Park

140 Bonis Ave
A playground, a basketball court, and a tennis court.



2 mins

Collingwood Park

30 Collingwood St
A playground and a basketball court.



7 mins

Tam O'Shanter Golf Course

2481 Birchmount Road
A golf course.



7 mins

FACILITIES WITHIN A 20 MINUTE WALK

3 Playgrounds
4 Tennis Courts
2 Ball Diamonds
6 Sports Fields
1 Track
1 Community Centre
1 Splash Pad
1 Golf Course
1 Sports Court
2 Trails
1 Fitness/Weight Room

TRANSIT

Public transit is at this home's doorstep for easy travel around the city. The nearest street transit stop is only a 3 minute walk away and the nearest rail transit stop is a 9 minute walk away.

Nearest Rail Transit Stop

Agincourt GO



9 mins

Nearest Street Level Transit Stop

Kennedy Rd At Marilyn Ave South Side



3 mins

SAFETY

With safety facilities in the area, help is always close by. Facilities near this home include a fire station, a hospital, and a police station within 4.19km.

Scarborough Health Network - Birchmount Campus

3030 Birchmount Rd

Fire Station

2340 Birchmount Rd

Police Station

242 Milner Ave



HoodQ

Disclaimer: These materials have been prepared for ycmarketing@yahoo.com and are not intended to solicit buyers or sellers currently under contract with a brokerage. By accessing this information you have agreed to our terms of service, which are hereby incorporated by reference. This information may contain errors and omissions. You are not permitted to rely on the contents of this information and must take steps to independently verify its contents with the appropriate authorities (school boards, governments etc.). As a recipient of this information, you agree not to hold us, our licensors or the owners of the information liable for any damages, howsoever caused.

Luxury Living At Joy Condominiums by Gemterra

Welcome To This Bright, Open Concept 1 Bedroom Plus Den Unit Featuring A Functional Layout Ideal For Modern Living. The Large Den Offers Versatile Use As A Home Office, Second Bedroom, Or Separate Dining Room. Enjoy A Spacious Living Room Perfect For Entertaining, Complemented By Laminate Flooring Throughout. The Modern Kitchen Boasts Stainless Steel Appliances And Granite Countertops, While The Primary Bedroom Is Bright And Includes A Walk-In Closet And 4Pc Ensuite Bathroom For Added Privacy And Convenience. Located In The Heart Of Scarborough's Sought-After Agincourt Neighborhood, This Unit Offers Unbeatable Convenience. Steps From Agincourt Mall, Agincourt Go Station With New Pedestrian Tunnel And Parking, Highway 401, Top-Rated Schools, Libraries, Tam O'Shanter Golf Course, And Community Centers. In Addition, Scarborough Town Centre, Don Valley Parkway, Fairview Mall, And The Scarborough Bluffs Are Just A Short Drive Away. Building Amenities Include 24-Hour Concierge, Gym, Rooftop Patio, Party Room, Guest Suite, Indoor Pool, Sauna, And Hot Tub, Enhancing Your Lifestyle In This Vibrant Community. This Is The Perfect Home For Those Seeking Spacious, Comfortable Living In A Prime, Well-Connected Location With Excellent Amenities And Community Resources.

All Existing Stainless Steel Appliances: Whirlpool Fridge, Whirlpool Dishwasher, Whirlpool Stove, Whirlpool Microwave Rangehood, White Whirlpool Stackable Washer & Dryer Combo. All Existing Light Fixtures, Granite Counters, Laminate Flooring, Parking, Locker.

Exclusions: Curtains In Living Room And Bedroom

Maintenance Fee: \$687.02/month | Property Tax: \$2,532.12/2024

Royal LePage Your Community Realty Brokerage does not warrant or guarantee the information in this feature sheet.