

WELCOME TO

# 79 Gail Parks Crescent

[www.79gailparks.com](http://www.79gailparks.com)



**Marek Kloda**  
Broker



TEAM **ZOLD**

Your Home • Your Life • Your Realtors

*Working For You!*

905.731.2000  
[www.teamzold.com](http://www.teamzold.com)



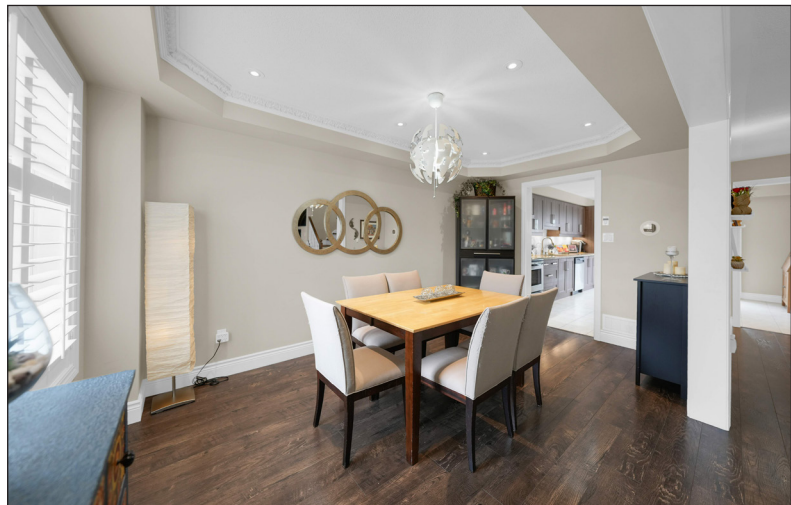
ROYAL LEPAGE  
**CHAIRMAN'S CLUB**  
NATIONAL  
TOP 1%  
LIFETIME MEMBER



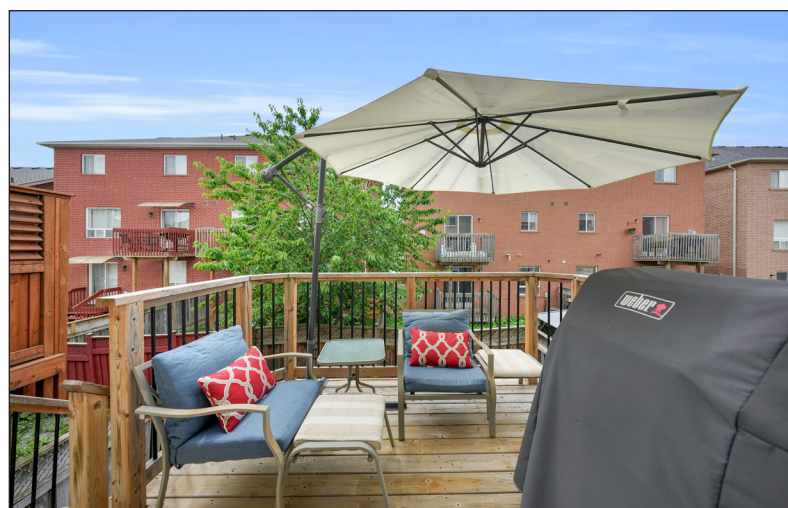
**Shawn Zigelstein**  
Broker



# 79 Gail Parks Crescent, Newmarket









## PUBLIC SCHOOLS

Your neighbourhood is part of a community of Public Schools offering Elementary, Middle, and High School programming.

### ÉS Norval-Morrisseau

Designated Catchment School  
Grades 7 to 12  
51 Wright St

### Dr John M Denison SS

Designated Catchment School  
Grades 9 to 12  
135 Bristol Rd

### Alexander Muir PS

Designated Catchment School  
Grades PK to 8  
75 Ford Wilson Blvd

### Poplar Bank PS

Designated Catchment School  
Grades 3 to 8  
400 Woodspring Ave

## ALTERNATIVE & SPECIAL SCHOOLS

Nearby alternative and special education schools include:

### The Lighthouse Learning and Development

Grades K to 12  
222 Edward St

### The Lighthouse Learning and Development

Grades K to 12  
222 Edward St

## PARKS & REC.

This home is located in park heaven, with 4 parks and a long list of recreation facilities within a 20 minute walk from this address.



### Environmental Park

332 Woodspring Ave  
4 mins

### Bonshaw Avenue Park

126 Bonshaw Ave  
5 mins

### Woodland Hill Labyrinth Park

45 Ford Wilson Boulevard  
8 mins

### FACILITIES WITHIN A 20 MINUTE WALK

4 Playgrounds  
1 Basketball Court  
3 Sports Fields  
1 Sports Court  
2 Trails  
1 Arts/Performance Facility

## TRANSIT

Public transit is at this home's doorstep for easy travel around the city. The nearest street transit stop is only a 3 minute walk away and the nearest rail transit stop is a 32 minute walk away.

### Nearest Rail Transit Stop

Newmarket GO

### Nearest Street Level Transit Stop

Woodspring Av / Alfred Smith Way



3 mins

## SAFETY

With safety facilities in the area, help is always close by. Facilities near this home include a fire station, a hospital, and a police station within 2.96km.

### Southlake Regional Health Centre

596 Davis Dr

### Fire Station

125 McCaffrey Rd

### Police Station

240 Prospect Street

## FINANCE



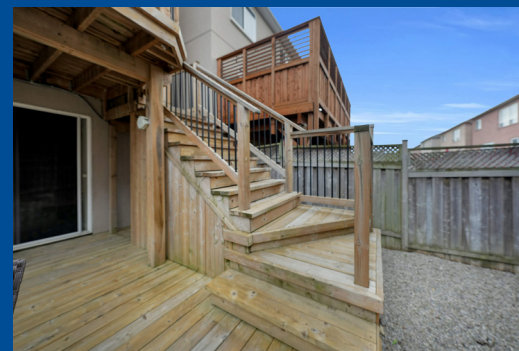
### Ernie Zambri

Your Mortgage Planner

Licence #M08001763

M: (416) 571-2842

E: ernie@mortgagebroker.ca



\*\*\*Welcome To 79 Gail Parks Crescent\*\*\*

A Stunning 3-Bedroom, 3-Bathroom Townhome In Newmarket's Woodland Hills.

This Bright, Well-Maintained Home Blends Modern Elegance And Practicality, Offering Great Value In Today's Buyer's Market.

The Ground Level Features A Versatile Recreational Room, Ideal As A Home Office Or Playroom, With A Walkout To A Private, Fenced Backyard With A Deck. Convenient Garage Access To The Yard Enhances Indoor-Outdoor Flow For Entertaining Or Daily Use. Step Into The Open-Concept Main Floor With Gleaming Engineered Hardwood Floors And Large Windows For A Light-Filled Atmosphere. The Modern Kitchen Boasts Stainless Steel Appliances, Granite Countertops, Sleek Cabinetry, A Custom Backsplash, And A Centre Island With Breakfast Bar, Plus A Walkout To A Private Balcony With A BBQ Gas Hook-Up For Outdoor Dining. The Living And Dining Areas, Adorned With California Shutters, Flow Seamlessly. A 2-Piece Bathroom, Upgraded With A Taller Dual-Flush Toilet, And A Same-Level Laundry Room With Front-Load Washer And Dryer Add Practicality.

The Primary Suite Offers An Extra-Large Ikea Closet And A 4-Piece Ensuite With A Glass Walk-In Shower, Dual Sinks, And A Taller Dual-Flush Toilet. Two More Bedrooms And A Third Bathroom With Upgraded Toilet Provide Flexibility. Smart Upgrades Include A Ring Video Doorbell, Wi-Fi Garage Opener, Smart Thermostat, Central Humidifier, Water Softener, And HD TV Antenna For Toronto/US Channels. The Stylish Stucco Exterior And Interlock Driveway With Steps Elevate Curb Appeal.

Steps From Top-Rated Schools, Upper Canada Mall, Walmart, Costco, Home Depot, Silvercity, Newmarket GO Station, Yonge Street Transit, And Near Hwy 404/400, This Home Is Perfectly Located. Move-In Ready, 79 Gail Parks Crescent Is A Gem.

Extras: All Existing Appliances: Black Allure Range Hood, Frigidaire Stainless Steel Flat Top Stove, Frigidaire Stainless Steel Built-In Dishwasher, Black GE French Door Fridge W/Bottom Freezer, GE White Front Load Washer And Dryer, Water Softener, Ring Video Camera, Chamberlain Wi-Fi Garage Door Opener, Ecobee Thermostat.

Excluded: Freezer In The Garage, Microwave

Rental: Carrier Furnace With Aprilaire Humidifier Feb 2025 And Kinghome Heat Pump Feb 2025 (\$296 + HST Plus HST/Month), Rheem Hot Water Tank (\$36.25 Plus HST/Month)

Taxes - \$4,468.94 /2025 | Lot: 24.61 ft x 82.02 ft

Royal LePage Your Community Realty Brokerage does not warrant or guarantee the information in this feature sheet.