

WELCOME TO

60 Wimbledon Court

www.60Wimbledon.com



Marek Kloda
Broker



TEAM **ZOLD**

Your Home • Your Life • Your Realtors

Working For You!

905.731.2000
www.teamzold.com

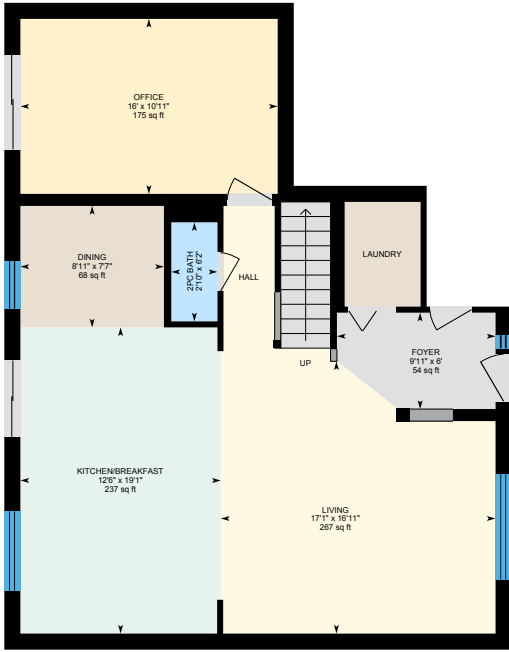


ROYAL LEPAGE
CHAIRMAN'S CLUB
NATIONAL
TOP 1%
LIFETIME MEMBER



Shawn Zigelstein
Broker

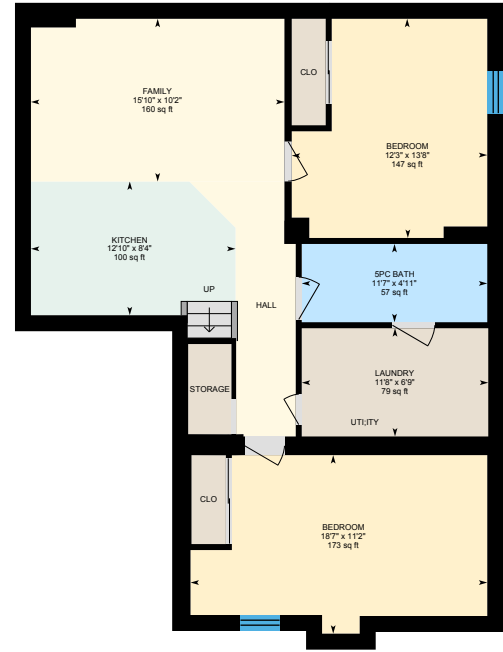
60 Wimbledon Court, Newmarket



1st Floor

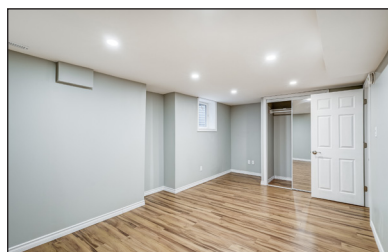
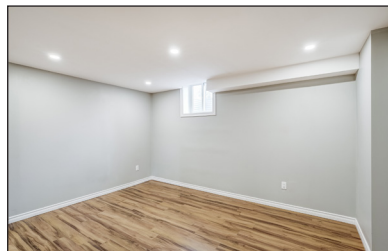


2nd Floor



Basement (Below Grade)





PUBLIC SCHOOLS

Your neighbourhood is part of a community of Public Schools offering Elementary, Middle, and High School programming.

Maple Leaf PS

Designated Catchment School
Grades PK to 8
155 Longford Dr

Dr John M Denison SS

Designated Catchment School
Grades 9 to 12
135 Bristol Rd

Poplar Bank PS

Designated Catchment School
Grades 3 to 8
400 Woodspring Ave

ÉS Norval-Morrisseau

Designated Catchment School
Grades 7 to 12
51 Wright St

ALTERNATIVE & SPECIAL SCHOOLS

Nearby alternative and special education schools include:

Above and Beyond Learning Experience

Grades 1 to 12
1220 Stellar Dr

Above and Beyond Learning Experience

Grades 1 to 12
1220 Stellar Dr

CATHOLIC SCHOOLS

Your neighbourhood is part of a community of Catholic Schools offering Elementary, Middle, and High School programming.

Canadian Martyrs Catholic ES

Grades PK to 8
170 London Rd

ÉÉC Jean-Béliveau

Grades PK to 6
19300 2nd Concession Rd

Sacred Heart Catholic HS

Grades 9 to 12
908 Lemar Rd

ÉSC Renaissance

Grades 7 to 12
700 Bloomington Rd

PRIVATE SCHOOLS

The private schools nearest to you are:



Pickering College

Grades PK to 12
16945 Bayview Ave

Newmarket & District Christian Academy

Grades K to 8
221 Carlson Dr

Country Garden Montessori Academy

Grades PK to 12
601 Newpark Blvd

Innova Academy

Grades PK to 8
1000 Gorham St

PARKS & REC.

This home is located in park heaven, with 4 parks and a long list of recreation facilities within a 20 minute walk from this address.



Cardinal Crescent Parkette

117 Cardinal Crescent



3 mins



Rogers Park

170 London Rd



7 mins



Proctor Park

116 London Rd



5 mins



FACILITIES WITHIN A 20 MINUTE WALK

4 Playgrounds
1 Track
1 Basketball Court
1 Splash Pad
3 Ball Diamonds
2 Sports Courts
4 Sports Fields



TRANSIT

Public transit is at this home's doorstep for easy travel around the city. The nearest street transit stop is only a 3 minute walk away and the nearest rail transit stop is a 21 minute walk away.



Nearest Rail Transit Stop

Newmarket GO



Nearest Street Level Transit Stop

Yonge St. @ Kingston Rd.



3 mins

SAFETY

With safety facilities in the area, help is always close by. Facilities near this home include a fire station, a hospital, and a police station within 2.3km.



Southlake Regional Health Centre

596 Davis Dr



Fire Station

125 McCaffrey Dr



Police Station

240 Prospect Street

HoodQ

Disclaimer: These materials have been prepared for shawn@teamzold.com and are not intended to solicit buyers or sellers currently under contract with a brokerage. By accessing this information you have agreed to our terms of service, which are hereby incorporated by reference. This information may contain errors and omissions. You are not permitted to rely on the contents of this information and must take steps to independently verify its contents with the appropriate authorities (school boards, governments etc.). As a recipient of this information, you agree not to hold us, our licensors or the owners of the information liable for any damages, howsoever caused.



Welcome To 60 Wimbleton Court, A Beautifully Renovated Home Nestled In A Serene, Family-Friendly Crescent In Newmarket With Over \$160K in Upgrades. This Residence Offers Both Comfort And Opportunity, Featuring An Open Concept Layout With Three Bedrooms On The Upper Level And A Self-Contained Two-Bedroom Suite In The Basement, Complete With A Separate Side Entrance, Extra Kitchen, 5-Piece Bathroom, And Private Laundry—Ideal For Multigenerational Living Or As An Income-Generating Space. As You Enter, The Grand Foyer Sets The Tone For The Home's Elegant Interiors And Oak Floors. The Main Floor Boasts A Newly Updated Kitchen, Equipped With Top-Of-The-Line Kitchen-Aid Appliances, A Large Quartz Island, Marble Backsplash, Deep Extra-Large Sink, Wine Fridge, And Balance Lighting. This Leads Seamlessly Into The Dining Area And Out To A Spacious, Fenced Backyard, Perfect For Relaxation Or Entertainment. The Principal Rooms Are Generously Sized, Designed For Comfortable Living And Functional Efficiency. Convenience Is Further Enhanced By Main-Floor Laundry Facilities And A Separate Side Entrance To The Basement.

Outside, The Private Backyard Is A Lush Retreat, Adorned With Mature Trees, Trampoline, A Shed, And Vast Space For Outdoor Activities. It's A Perfect Setting To Enjoy The Tranquility Of Nature Or Host Gatherings.

Located Near Yonge Street, With Easy Access To Viva Transit, Upper Canada Mall, Canadian Tire, Staples, And Excellent Schools, This Home Combines Luxury Living With The Convenience Of Nearby Amenities. Discover The Unique Charm Of 60 Wimbleton Court—A True Gem In The Heart Of Newmarket.

Extras: All Electrical Light Fixtures, All Window Coverings, All Existing Stainless Steel Kitchen-Aid Main Floor Appliances: Built-In Oven, Built-In Microwave, Gas Cooktop, Range Hood, Built-In Dishwasher, Wine Fridge, Maytag Front Load Washer and Dryer; Basement Appliances: Frigidaire Single Door Fridge, LG Over the Range Microwave, GE Flat Top Stove, Maytag Washer, Frigidaire Dryer; New AC, Furnace, Water Filtration System.

Rental: HWT

Lot: 45.20 ft x 110.27 ft | Taxes: \$4,778.33/2023

Royal LePage Your Community Realty Brokerage does not warrant or guarantee the information in this feature sheet.