

WELCOME TO

607 Heddle Crescent

www. 607Heddle.com



Marek Kloda
Broker



BROKERAGE INDEPENDENTLY OWNED & OPERATED

TEAM ZOLD

Your Home • Your Life • Your Realtors

Working For You!

905.731.2000
www.teamzold.com

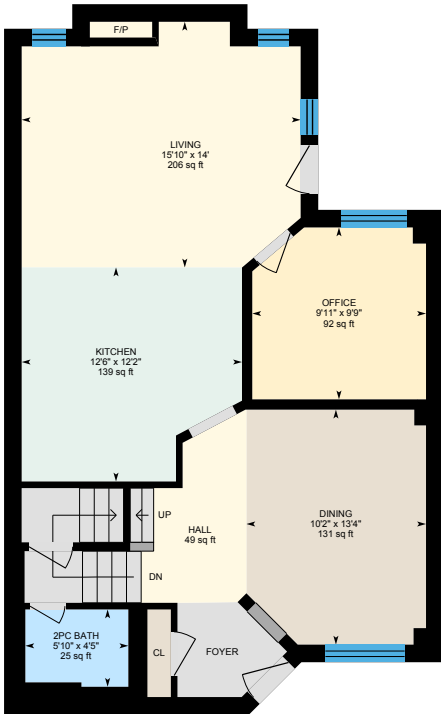


ROYAL LEPAGE
CHAIRMAN'S
CLUB
NATIONAL
TOP 1%
LIFETIME MEMBER

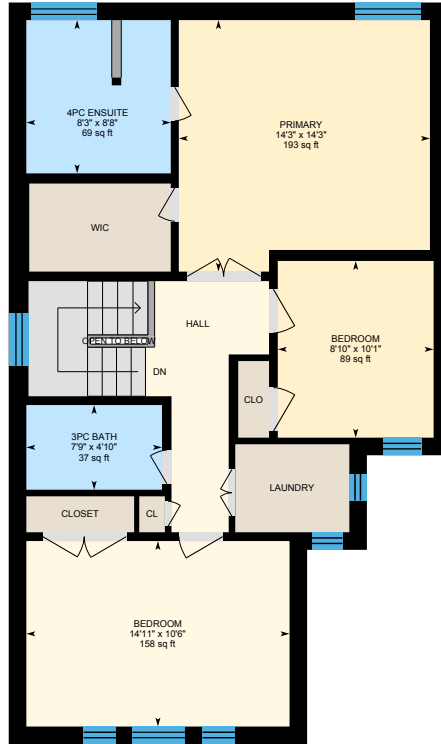


Shawn Zigelstein
Broker

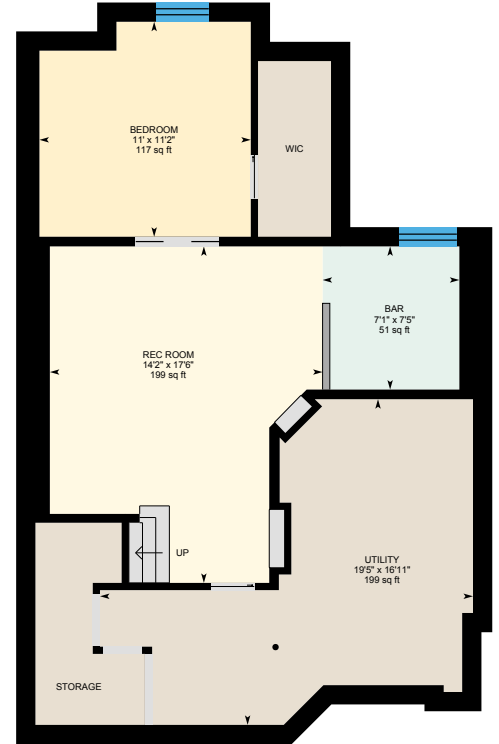
607 Heddlu Crescent, Newmarket



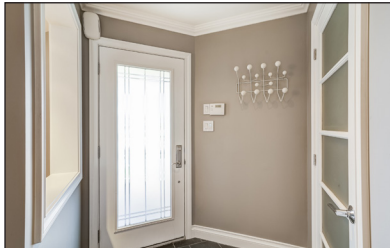
1st Floor



2nd Floor



Basement (Below Grade)





PUBLIC SCHOOLS

Your neighbourhood is part of a community of Public Schools offering Elementary, Middle, and High School programming.

Armitage Village PS

Designated Catchment School
Grades PK to 8
125 Savage Rd

Sir William Mulock SS

Designated Catchment School
Grades 9 to 12
705 Columbus Way

Mazo De La Roche PS

Designated Catchment School
Grades 2 to 8
860 Arnold Crescent

ÉS Norval-Morrisseau

Designated Catchment School
Grades 7 to 12
51 Wright St

ALTERNATIVE & SPECIAL SCHOOLS

Nearby alternative and special education schools include:

The Lighthouse Learning and Development

Grades K to 12
222 Edward St

The Lighthouse Learning and Development

Grades K to 12
222 Edward St

CATHOLIC SCHOOLS

Your neighbourhood is part of a community of Catholic Schools offering Elementary, Middle, and High School programming.

Notre Dame Catholic ES

Grades PK to 8
715 Kingsmere Ave

ÉÉC Saint-Jean

Grades PK to 6
90 Walton Dr

St. Maximilian Kolbe HS

Grades 9 to 12
278 Wellington St E

ÉSC Renaissance

Grades 7 to 12
700 Bloomington Rd

PRIVATE SCHOOLS

The private schools nearest to you are:



Country Garden Montessori Academy

Grades PK to 12
601 Newpark Blvd

Pickering College

Grades PK to 12
16945 Bayview Ave

Aurora Montessori School

Grades PK to 8
330 Industrial Pkwy N

Innova Academy

Grades PK to 8
1000 Gorham St

PARKS & REC.

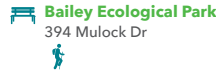
This home is located in park heaven, with 4 parks and a long list of recreation facilities within a 20 minute walk from this address.



Audrie Sanderson Park
620 McBean Avenue



3 mins



Bailey Ecological Park
394 Mulock Dr



9 mins



Laurelwood Parkette
876 Shadrach Dr



8 mins

FACILITIES WITHIN A 20 MINUTE WALK
3 Playgrounds
2 Tennis Courts
2 Basketball Courts
1 Ball Diamond
1 Sports Field
5 Trails



TRANSIT

Public transit is at this home's doorstep for easy travel around the city. The nearest street transit stop is only a 4 minute walk away and the nearest rail transit stop is a 39 minute walk away.



Nearest Rail Transit Stop
Newmarket GO



Nearest Street Level Transit Stop
Bayview Av / Mcbean Av



4 mins

SAFETY

With safety facilities in the area, help is always close by. Facilities near this home include a police station, a fire station, and a hospital within 2.91km.



Southlake Regional Health Centre
596 Davis Dr



Fire Station
125 McCaffrey Rd



Police Station
240 Prospect Street



Welcome To 607 Heddle Crescent, Simply Exquisite, And Meticulously Upgraded 3 + 1 Bedroom Home Located In The Prestigious Stonehaven Community Of Newmarket, Where Modern Design Meets Functionality. This Property Boasts Over \$250k Of Upgrades And High-End Features With A Well-Thought-Out Layout, Making It A Standout Residence!!! The Home Greet's You With A Large Interlocked Driveway Surrounded By Manicured Hedges, Leading To A Fabulous Backyard Oasis Complete

With A Waterfall Feature And Gazebo—Perfect For Outdoor Relaxation. The Entrance And Powder Room Floors Are Laid With Natural Slate, Adding To The Home's Elegant Ambiance. Inside, The Main And Basement Kitchens Dazzle With White Lacquer Finishes, Black And White Quartz Countertops. Stainless Steel Appliances From Brands Like Samsung, Kitchenaid And Bosch, Underscore The Home's Quality. Waterfall Island, With Custom Large Sink Seamlessly Merges With A Spacious Living Room. The Living Room Features A High Vaulted Ceiling With Kichler Ceiling Fan, A Contemporary Gas Fireplace, With Built-In Wall Unit And Ample Natural Light. All Bathrooms Are Uniquely Designed By Canaroma, With The Kitchen Crafted By Raywal Kitchens And Countertops From Crown Marble. Luxury Touches Throughout The House Include Recessed Frosted Glass Doors, A Custom Glass Block Wall In The Hallway, And Exclusive Designer Lighting Fixtures Like "The Big Bang" By Foscarini And "Edge" By Alessandro Mendini. The Home Is Tech-Ready With Bluetooth Capability, Usb Ports, And High-End Metal Interior Taps By Di Segno And Grohe. It's Also Practical, Featuring A "Man Cave" Ready Garage With An Electric Car Charger Outlet, Garage Heater And A Nilfisk Central Vacuum System. Situated Close To The Magna Sport Centre, Shopping Plazas, And Restaurants, With Easy Access To Future Go Station Transit And Only Minutes From Hwy 404, This Home Offers Both Luxury And Convenience. A True Gem In Newmarket, 607 Heddle Crescent Is A Must-See For Those Seeking A Sophisticated Lifestyle.

Extras: All Electrical Light Fixtures, All Window Coverings, All Existing Stainless Steel Appliances: Samsung French Door Bottom Drawer Fridge, KitchenAid Flat Top Stove, Range Hood, Bosh Dishwasher, Furnace And Hot Water Tank, Aquabon Water Softener, Stereo Equipment – Basement Has 52" Sharp Tv, Denon Receiver, Denon Blue Ray Disc Player, Monster High-Definition Power Centre, "Salimander Equipment Rack", Family Room 65" Panasonic TV, Definitive Surround Sound System, Denon Receiver, Master Bedroom 40" Sharp Tv, Panasonic Surround Sound System On Black Glass TV Equipment Stand. Bedroom 50" Panasonic TV, Furnace, AC, Water Heater And Aquabon Water Softener.

Excluded: Dyson Floor Vacuum (In Office), Dining Room Chairs, Black Kitchen Stools, Table Lights – Original Designs By Artemide, Wall Clock In Hallway "Running Man", Gladiator Cabinet In The Garage

Lot: 32.81 ft x 114.83 ft | Tax: \$5,484.98 / 2023

Royal LePage Your Community Realty Brokerage does not warrant or guarantee the information in this feature sheet.