

56 Reeve Drive

www.56Reeve.com



Sarah Norris
Sales Representative



BROKERAGE INDEPENDENTLY OWNED & OPERATED

TEAM ZOLD

Your Home • Your Life • Your Realtors

Working For You!

905.731.2000
www.teamzold.com

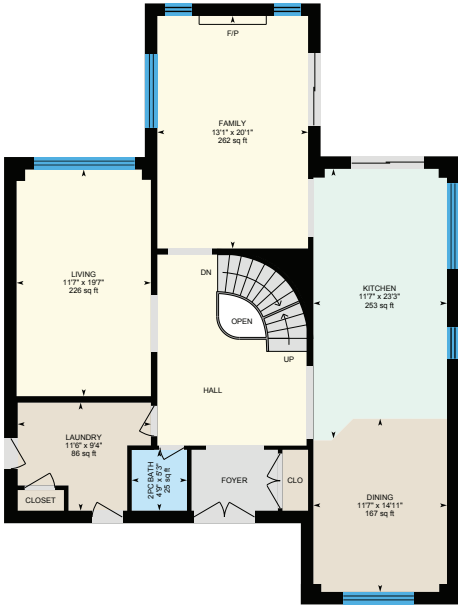


ROYAL LEPAGE
CHAIRMAN'S CLUB
NATIONAL TOP 1%
2012-2020

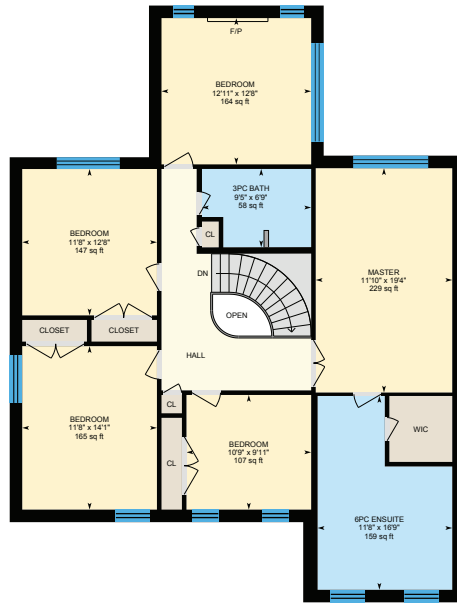
Shawn Zigelstein
Broker



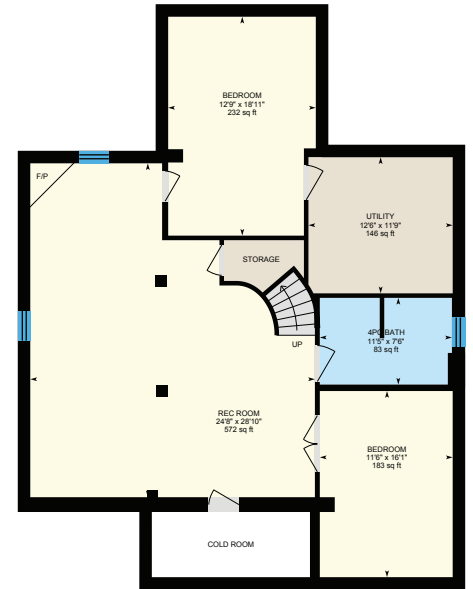
56 Reeve Drive, Markham



Main Level



Upper Level



Lower Level





CATHOLIC SCHOOLS

Your neighbourhood is part of a community of Catholic Schools offering Elementary, Middle, and High School programming.

St Patrick Catholic ES

Grades PK to 8 (Assigned)
5607 York Regional Rd 7

St Edward Catholic ES

Grades PK to 8 (Assigned)
33 Cairns Dr

St Brother André Catholic HS

Grades 9 to 12 (Assigned)
6160 16th Ave

PRIVATE SCHOOLS

The private schools nearest to you are:

Cambridge Academy

Grades 9 to 12
5873 ON-7

Wesley Christian Academy

Grades PK to 8
22 Heritage Rd

Alathena International Academy - Markham

Grades 9 to 12
8515 McCowan Rd

MindTech Montessori School East Campus

Grades PK to 8
8961 Ninth Line



SCHOOLS

With excellent assigned and local public schools near this home, your kids will get a great education in the neighbourhood.



William Armstrong PS

Designated Catchment School
Grades PK to 8
11 Major Buttons Dr

Markham DHS

Designated Catchment School
Grades 9 to 12
89 Church St

Other Local Schools

Bill Crothers SS

Grades 9 to 12
44 Main St Unionville

Franklin Street Public School - FI

Designated Catchment School
JK-8(E), 3-8(F)
21 Franklin St.

PARKS & REC.

This home is located in park heaven, with 4 parks and 9 recreation facilities within a 20 minute walk from this address.



Markham Village Community Centre / Reeve Park

6041 Hwy 7



4 min

Milne Dam Conservation Park

8 min

Rouge Valley

Tuclor Ln

7 min

FACILITIES WITHIN A 20 MINUTE WALK

2 Playgrounds
1 Community Centre
1 Community Hall
2 Rinks
2 Trails
1 Picnic Facilities

TRANSIT

Public transit is at this home's doorstep for easy travel around the city. The nearest street transit stop is only a 5 minute walk away and the nearest rail transit stop is a 18 minute walk away.

Nearest Rail Transit Stop

Markham GO

18 min

Nearest Street Level Transit Stop

Highway 7 / Cosburn Rd

5 min

SAFETY

With safety facilities in the area, help is always close by. Facilities near this home include a fire station, a police station, and a hospital within 2.61km.

Markham Stouffville Hospital

381 Church St

Fire Station

209 Main St N

Police Station

8700 McCowan Road

CONVENIENCE

This home is located near everyday amenities to make your daily errands easier.



Coffee



Gym



Grocery



Gas Station



The Belle Of Reeve Drive, One Of Markham's Most Prestigious Streets!

This Home Has Far Too Many +++. Over 4,000 Sqft Of Elegant Living Space; \$100k+ On Kitchen Renovations; All Main Bathrooms Renovated With Riobel Faucets And Rainheads; State-Of-Art Security & Home Audio/Video Systems; Backyard Oasis Complete With Outdoor Kitchen/Living Space, Major Landscaping And Pool. Steps To All Amenities Including: Shopping, Schools, Transit (Public/Go), Parks, Hwy 407.

Lot: 59.71 x 116 Feet ~ Taxes: \$6,652.55 /2020

Royal LePage Your Community Realty does not warrant or guarantee the information on this feature sheet.