

558 Heddle Crescent

www.558Heddle.com



Your Community
REALTY
ROYAL LEPAGE
BROKERAGE INDEPENDENTLY OWNED & OPERATED

Marek Kloda
Broker

TEAM **ZOLD**

Your Home • Your Life • Your Realtors

Working For You!

905.731.2000
www.teamzold.com

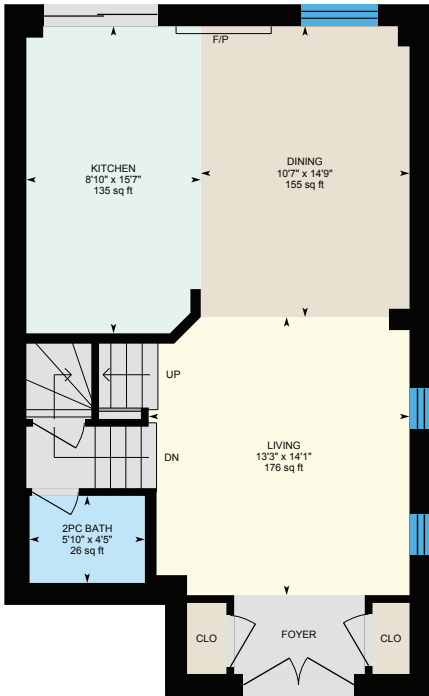


ROYAL LEPAGE
CHAIRMAN'S CLUB
NATIONAL TOP 1%
2012-2020

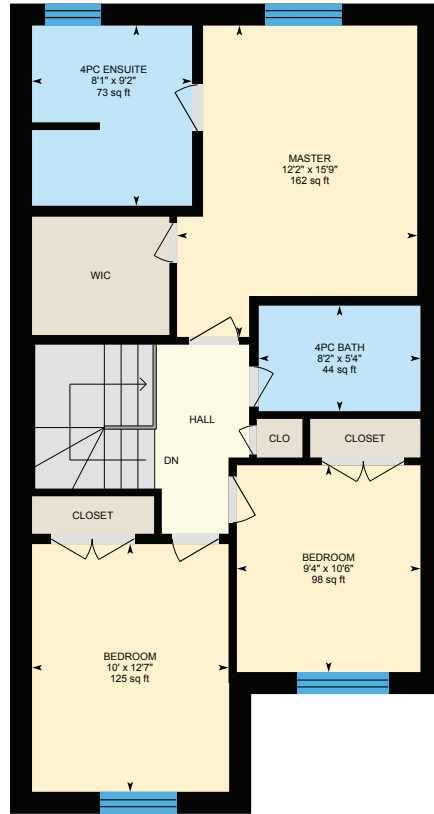
Shawn Zigelstein
Broker



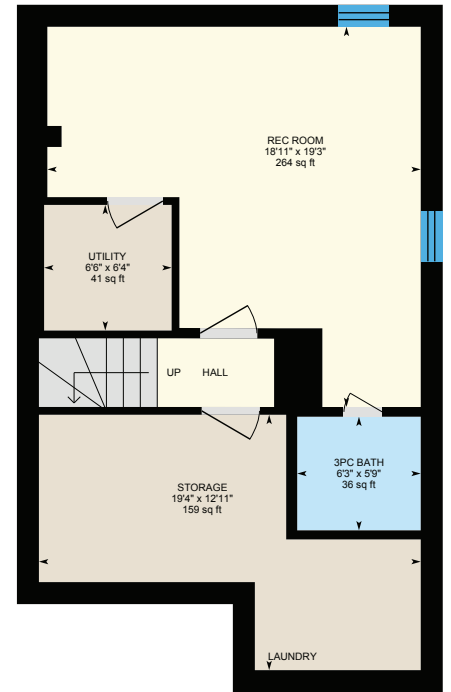
558 Heddle Crescent, Newmarket



Main Floor

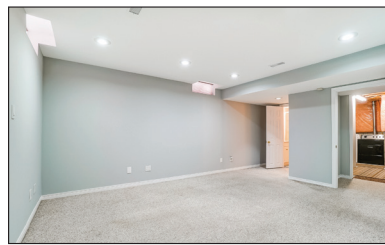


2nd Floor



Basement (Below Grade)





PUBLIC SCHOOLS

Your neighbourhood is part of a community of Public Schools offering Elementary, Middle, and High School programming.

Armitage Village PS

Designated Catchment School
Grades PK to 8
125 Savage Rd

Sir William Mulock SS

Designated Catchment School
Grades 9 to 12
705 Columbus Way

Mazo De La Roche PS

Designated Catchment School
Grades 1 to 8
860 Arnold Crescent

ÉS Norval-Morrisseau

Designated Catchment School
Grades 7 to 12
51 Wright St

ALTERNATIVE & SPECIAL SCHOOLS

Nearby alternative and special education schools include:

The Lighthouse Learning and Development

Grades K to 12
219 Old Yonge St

The Lighthouse Learning and Development

Grades K to 12
219 Old Yonge St



CATHOLIC SCHOOLS

Your neighbourhood is part of a community of Catholic Schools offering Elementary, Middle, and High School programming.

Notre Dame Catholic ES

Grades PK to 8 (Assigned)
715 Kingsmere Ave

ÉEC Saint-Jean

Grades PK to 6 (Assigned)
90 Walton Dr

St. Maximilian Kolbe HS

Grades 9 to 12 (Assigned)
278 Wellington St E

ÉSC Renaissance

Grades 7 to 12 (Assigned)
700 Bloomington Rd

PRIVATE SCHOOLS

The private schools nearest to you are:



Country Garden Montessori Academy

Grades PK to 12
601 Newpark Blvd

Pickering College

Grades PK to 12
16945 Bayview Ave

AIS Montessori and Elementary School

Grades PK to 8
415 Pickering Crescent

Aurora Montessori School

Grades PK to 8
330 Industrial Pkwy N

PARKS & REC.

This home is located in park heaven, with 4 parks and a long list of recreation facilities within a 20 minute walk from this address.



Audrie Sanderson Park

620 McBean Avenue



5 min

Art Ferguson Park

Bayview and Brooker Ridge



9 min

Willowick Park

615 Carberry Street



7 min

FACILITIES WITHIN A 20 MINUTE WALK

4 Playgrounds 1 Sports Field
2 Tennis Courts 2 Basketball Courts
1 Ball Diamond 4 Trails



TRANSIT

Public transit is at this home's doorstep for easy travel around the city. The nearest street transit stop is only a minute walk away and the nearest rail transit stop is a 38 minute walk away.

Nearest Rail Transit Stop

Newmarket GO

Nearest Street Level Transit Stop

Bayview Av / Newpark Blvd



1 min

SAFETY

With safety facilities in the area, help is always close by. Facilities near this home include a police station, a fire station, and a hospital within 2.83km.

Southlake Regional Health Centre

596 Davis Dr

Fire Station

984 Gorham St

Police Station

240 Prospect Street

CONVENIENCE

This home is located near everyday amenities to make your daily errands easier.



Coffee



Gym



Grocery



Gas Station



HoodQ

Disclaimer: These materials have been prepared for show@hoodq.com and are not intended to solicit buyers or sellers currently under contract with a brokerage. By accessing this information you have agreed to our terms of service, which are hereby incorporated by reference. This information may contain errors and omissions. You are not permitted to rely on the contents of this information and must take steps to independently verify its contents with the appropriate authorities (school boards, governments etc.). As a recipient of this information, you agree not to hold us, our licensors or the owners of the information liable for any damages, howsoever caused.

AMAZING CUSTOM RENOVATED 3+1 BEDROOM STONEHAVEN GEM

Freshly Painted with Smooth Ceilings On A Quiet, Child Safe Crescent, In Newmarket's South End! Beautiful, Open Concept Main Floor Features Upgraded LED Light Fixtures, Gas Fireplace, Bright Kitchen Walk-Out To The Fully Fenced Backyard! The Upper Level Boasts A Large Master Bedroom With 4 PC Ensuite, Walk-In Closet, Finished Basement Has Extra Bedroom, 3 Piece Bath With Shower for Your In-Laws! Great Opportunity!!!

Extras: Stainless Steel Existing Appliances (Fridge, Flat Top Stove, Built In Dishwasher), Washer And Dryer, All Elfs, All Window Coverings, Water Softener, AC, Furnace, Central Vacuum, Newer Roof (2019) And So Much More.

Lot Size: 32.19 ft x 115.00 ft

Taxes: \$4,052.71/2021

Royal LePage Your Community Realty Brokerage does not warrant or guarantee the information in this feature sheet.