

554 Heddle Crescent

www.554Heddle.com



ROYAL LEPAGE
CHAIRMAN'S CLUB
NATIONAL TOP 1%
2012-2019

Shawn Zigelstein
Broker

TEAM **ZOLD**

Your Home • Your Life • Your Realtors

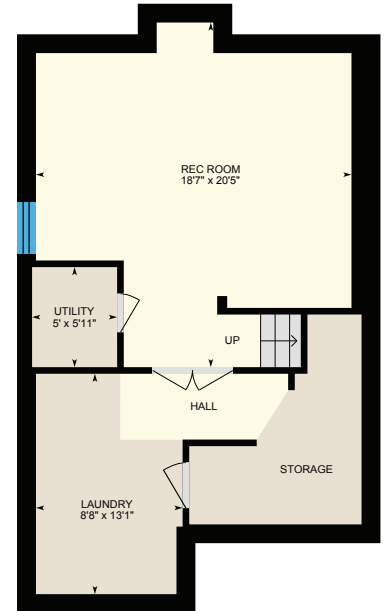
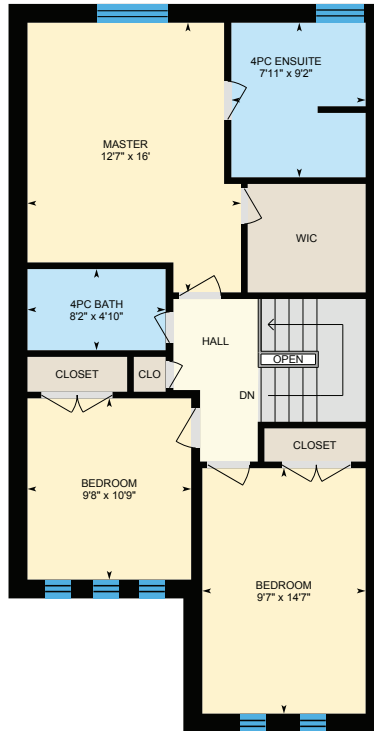
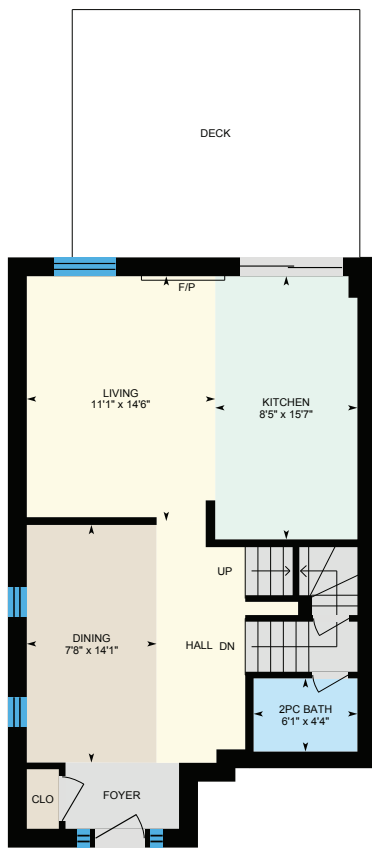
Working For You!

905.731.2000
www.teamzold.com

Your
Community
REALTY

ROYAL LEPAGE

BROKERAGE INDEPENDENTLY OWNED & OPERATED





PUBLIC SCHOOLS

Your neighbourhood is part of a community of Public Schools offering Elementary, Middle, and High School programming.

Armitage Village PS

Designated Catchment School
Grades PK to 8
125 Savage Rd

Académie de la Moraine

Designated Catchment School
Grades PK to 6
115 George St

ÉS Norval-Morriseau

Designated Catchment School
Grades 7 to 12
51 Wright St

Mazo De La Roche PS

Designated Catchment School
Grades 1 to 8
860 Arnold Crescent

Sir William Mulock SS

Designated Catchment School
Grades 9 to 12
705 Columbus Way

ALTERNATIVE & SPECIAL SCHOOLS

Nearby alternative and special education schools include:

The Lighthouse Learning and Development

Grades K to 12
219 Old Yonge St

The Lighthouse Learning and Development

Grades K to 12
219 Old Yonge St



CATHOLIC SCHOOLS

Your neighbourhood is part of a community of Catholic Schools offering Elementary, Middle, and High School programming.

Notre Dame Catholic ES

Grades PK to 8 (Assigned)
715 Kingsmere Ave

ÉEC Saint-Jean

Grades PK to 12 (Assigned)
90 Walton Dr

St. Maximilian Kolbe HS

Grades 9 to 12 (Assigned)
278 Wellington St E

ÉSC Renaissance

Grades 7 to 12 (Assigned)
700 Bloomington Rd

PRIVATE SCHOOLS

The private schools nearest to you are:



Country Garden Montessori Academy

Grades PK to 12
601 Newpark Blvd

Pickering College

Grades PK to 12
16945 Bayview Ave

AIS Montessori and Elementary School

Grades PK to 8
415 Pickering Crescent

Aurora Montessori School

Grades PK to 8
330 Industrial Pkwy N

PARKS & REC.

This home is located in park heaven, with 4 parks and a long list of recreation facilities within a 20 minute walk from this address.



Audrie Sanderson Park

620 McBean Avenue



5 min

Willowick Park

615 Carberry Street



8 min

Art Ferguson Park

Bayview and Brooker Ridge



9 min

FACILITIES WITHIN A 20 MINUTE WALK

4 Playgrounds
2 Tennis Courts
1 Ball Diamond
1 Sports Field
2 Basketball Courts
4 Trails

TRANSIT

Public transit is at this home's doorstep for easy travel around the city. The nearest street transit stop is only a minute walk away and the nearest rail transit stop is a 38 minute walk away.



Nearest Rail Transit Stop

Newmarket GO



Nearest Street Level Transit Stop

Bayview Av / Newpark Blvd



1 min

SAFETY

With safety facilities in the area, help is always close by. Facilities near this home include a police station, a fire station, and a hospital within 2.84km.

Southlake Regional Health Centre

596 Davis Dr

Fire Station

984 Gorham St

Police Station

240 Prospect Street

CONVENIENCE

This home is located near everyday amenities to make your daily errands easier.

Coffee



Gym



Grocery

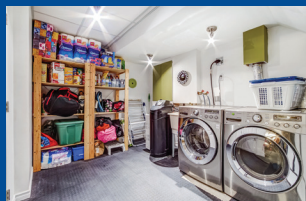
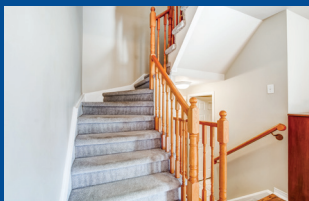
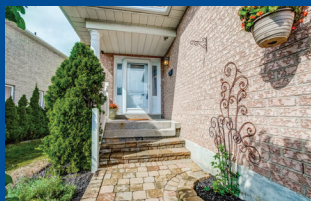


Gas Station



HoodQ

Disclaimer: These materials have been prepared for shawn@teamzold.com and are not intended to solicit buyers or sellers currently under contract with a brokerage. By accessing this information you have agreed to our terms of service, which are hereby incorporated by reference. This information may contain errors and omissions. You are not permitted to rely on the contents of this information and must take steps to independently verify its contents with the appropriate authorities (school boards, governments etc.). As a recipient of this information, you agree not to hold us, our licensors or the owners of the information liable for any damages, however caused.



AMAZING STONEHAVEN FAMILY SEMI ON QUIET CRESCENT

What An Amazing Opportunity To Find A Home With Such A Fantastic Layout, Several Updates, Private Yard, And Room To Entertain Great Friends And Family. Roof, Furnace, Front Door, Garage Door, LED Potlights, Stone Backsplash, Family Friendly Rear Deck, All Updated Over The Last Few Year. This Smart Thermostat Home Is Meticulously Maintained, And Needs To Be Seen To Be Appreciated. Close To Great Amenities.

EXTRAS: All Electric Light Fixtures, All Window Coverings, Existing Appliances (Whirlpool Fridge, Frigidaire Flat Top Stove, Frigidaire Built In Dishwasher, LG Grey Washer and Dryer), Gas Line For BBQ, Garage Door Opener and Remotes, Water Softener, Humidifier, AC, Furnace, Ecobee Thermostat, Basement Couch, Gas Fireplace, Swing Set.

Exclusions: Family Room Drapes, TV Mounts, Kitchen Knife Holders and Paper Towel Holder, Alarm System and Cameras

Lot: 22.75 ft x 116.35 ft Taxes: \$4,068.38/ 2020