

WELCOME TO

54 Reiber Crescent

www.54Reiber.com



Shawn Zigelstein
Broker



ROYAL LEPAGE
CHAIRMAN'S CLUB
NATIONAL TOP 1%
LIFETIME MEMBER

TEAM **ZOLD**

Your Home • Your Life • Your Realtors

Working For You!

www.teamzold.com

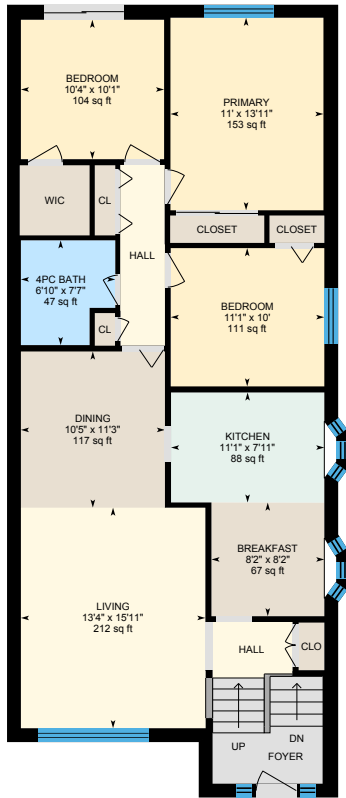
YOUR **Community**
REALTY™

ROYAL LEPAGE

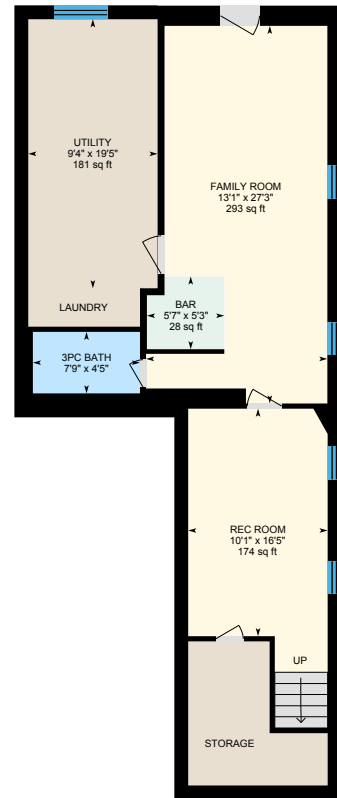
BROKERAGE INDEPENDENTLY OWNED & OPERATED

905.731.2000

54 Reiber Crescent, Toronto



Main Floor



Lower Level (Below Grade)





PUBLIC SCHOOLS

Your neighbourhood is part of a community of Public Schools offering Elementary, Middle, and High School programming.

Zion Heights Middle School

Designated Catchment School
Grades 6 to 8
5900 Leslie St

ÉÉ Paul-Demers

Designated Catchment School
Grades PK to 6
100 Ravel Rd

ÉS Étienne-Brûlé

Designated Catchment School
Grades 7 to 12
300 Banbury Rd

ALTERNATIVE & SPECIAL SCHOOLS

Nearby alternative and special education schools include:

North East Secondary Alternative School

Grades 10 to 12
2900 Don Mills Rd

Pineway Public School

Designated Catchment School
Grades PK to 5
110 Pineway Blvd

A. Y. Jackson Secondary School

Designated Catchment School
Grades 9 to 12
50 Francine Dr

Other Local Schools

Lester B. Pearson Elementary School

Grades K to 8
7 Snowcrest Ave

Avondale Secondary Alternative School

Grades 9 to 12
24 Silverview Drive

CATHOLIC SCHOOLS

Your neighbourhood is part of a community of Catholic Schools offering Elementary, Middle, and High School programming.

Blessed Trinity Catholic School

Grades PK to 8
3205 Bayview Ave

St. Cyril Catholic School

Grades PK to 8
18 Kempford Blvd

ÉÉC Sainte-Madeleine

Grades PK to 6
1 Ness Dr

ÉSC Monseigneur-de-Charbonnel

Grades 7 to 12
110 Drewry Ave

PRIVATE SCHOOLS

The private schools nearest to you are:



Metro International Secondary Academy

Grades 9 to 12
2 Simonston Blvd

Amberson High School

Grades 9 to 12
7100 Birchmount Rd

Bannockburn School

Grades PK to 8, Ungraded
3080 Bayview Ave

Bright Future Academy

Grades 9 to 12
513 McNicoll Ave

PARKS & REC.

This home is located in park heaven, with 4 parks and a long list of recreation facilities within a 20 minute walk from this address.



Pineway Park
110 Pineway Blvd

1 min

Cummer Park Community Centre
6000 Leslie St

7 mins

Cummer Park
6000 Leslie St

5 mins

FACILITIES WITHIN A 20 MINUTE WALK

- 2 Playgrounds
- 1 Pool
- 1 Rink
- 4 Tennis Courts
- 3 Basketball Courts
- 3 Ball Diamonds
- 3 Sports Fields
- 1 Track
- 1 Community Centre
- 1 Skateboard Park
- 2 Sports Courts
- 1 Trail
- 1 Fitness/Weight Room

TRANSIT

Public transit is at this home's doorstep for easy travel around the city. The nearest rail transit stop is only a 4 minute walk away and the nearest street transit stop is a 4 minute walk away.

Nearest Rail Transit Stop
Old Cummer GO

4 mins

Nearest Street Level Transit Stop
Leslie St At Castlebury Cres

4 mins

SAFETY

With safety facilities in the area, help is always close by. Facilities near this home include a fire station, a hospital, and a police station within 4.24km.

North York General Hospital
4001 Leslie St

Fire Station
3300 Bayview Ave

Police Station
30 Ellerslie Ave

HoodQ

Disclaimer: These materials have been prepared for show@teamzold.com and are not intended to solicit buyers or sellers currently under contract with a brokerage. By accessing this information you have agreed to our terms of service, which are hereby incorporated by reference. This information may contain errors and omissions. You are not permitted to rely on the contents of this information and must take steps to independently verify its contents with the appropriate authorities (school boards, governments etc.). As a recipient of this information, you agree not to hold us, our licensors or the owners of the information liable for any damages, howsoever caused.

WELCOME HOME TO THIS METICULOUSLY MAINTAINED RAISED BUNGALOW IN THE HEART OF NORTH YORK

Nestled In A Serene And Mature Neighborhood, This Home Has Been Cherished By Its Owners For Nearly Sixty Years. Boasting Three Bedrooms And A Finished Walkout Basement, It Offers Ample Space For Family Living. The Interior Features Timeless Hardwood Floors That Add Warmth And Character To The Space. Updated Over The Years With Renovations Including The Bathrooms, Windows, Roof, Driveway, Interlock, Furnace, And So Many More Recent Updates And Upgrades. Outside, The Property Has Fantastic Curb Appeal With Custom Landscaping And Interlocking That Speak Volumes Of The Care Invested Into It. The Two-Tiered Deck Provides A Perfect Setting For Outdoor Gatherings In The Back Yard Or A Quiet Evening Retreat. Practicality Meets Convenience With Parking Available For Three Cars, And The Location Couldn't Be Better. Situated Within Walking Distance To Schools, A Community Center, And Public Transit, Every Day Needs Are Well Within Reach. Shopping Enthusiasts Will Appreciate The Proximity To Local Shopping Destinations. This Home Is Not Just A House, But A Testament To The Love And Care It Has Received Over The Years, Ready To Welcome Its New Owners.

Extras: All Existing Appliances: Panasonic Stainless Steel Microwave, Kitchen Aid Flat Top Stainless Steel Stove, Whirlpool Stainless Steel Built-In Dishwasher, Fisher & Paykel White Fridge, White Fridge In the Basement, Maytag Maxima Gray Dryer, GE White Washer, All Window Coverings, All Electrical Light Fixtures, Honeywell Home Thermostat, Built-In Storage Shelves in The Basement, Humidifier, Furnace, AC.

Rental: Hot Water Tank

Lot: Irregular 37.29 ft x 130.02 ft | Taxes: \$5,130.31/ 2023

Royal LePage Your Community Realty Brokerage does not warrant or guarantee the information in this feature sheet.

