

# 545 Glencairn Avenue

[www.545Glencairn.com](http://www.545Glencairn.com)



ROYAL LEPAGE  
**CHAIRMAN'S CLUB**  
NATIONAL TOP 1%  
2012-2020

**Shawn Zigelstein**  
Broker

TEAM **ZOLD**

Your Home • Your Life • Your Realtors

*Working For You!*

905.731.2000  
[www.teamzold.com](http://www.teamzold.com)

YOUR  
**Community**<sup>™</sup>  
REALTY

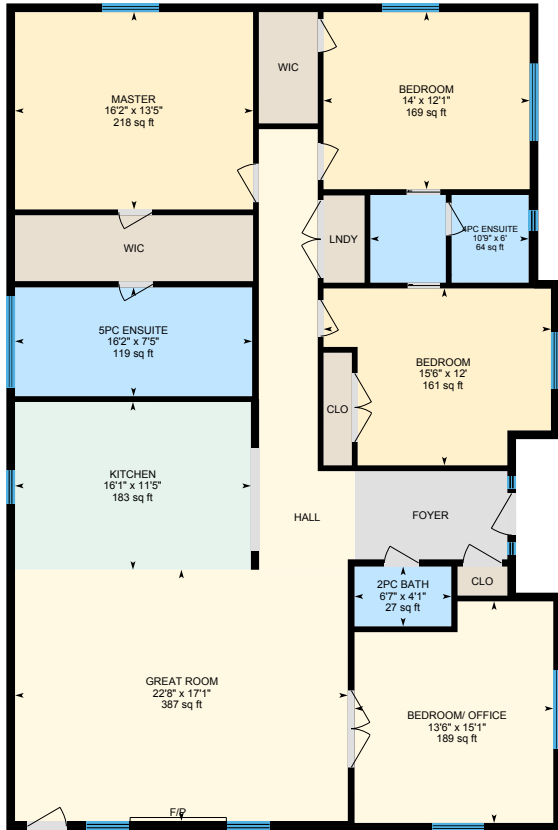
**ROYAL LEPAGE**

BROKERAGE INDEPENDENTLY OWNED & OPERATED



# 545 Glencairn Avenue, Toronto

Main Level



Lower Level









## PUBLIC SCHOOLS

Your neighbourhood is part of a community of Public Schools offering Elementary, Middle, and High School programming.

### Glen Park Public School

Designated Catchment School  
Grades PK to 6  
101 Englemount Ave

### É Élé Mathieu-da-Costa

Designated Catchment School  
Grades PK to 6  
116 Cornelius Pkwy

### ÉS Étienne-Brûlé

Designated Catchment School  
Grades 7 to 12  
300 Banbury Rd

### Ledbury Park Elementary and Middle School

Designated Catchment School  
Grades PK to 8  
95 Falkirk St

### John Polanyi Collegiate Institute

Designated Catchment School  
Grades 9 to 12  
640 Lawrence Ave W

### Other Local Schools

#### John Fisher Junior Public School

Grades K to 6  
40 Erskine Ave

## ALTERNATIVE & SPECIAL SCHOOLS

Nearby alternative and special education schools include:

### Shoore Academics

Grades 6 to 12  
801 Eglinton Ave W

### Magnificent Minds

Grades K to 8  
37 Southbourne Avenue



## CATHOLIC SCHOOLS

Your neighbourhood is part of a community of Catholic Schools offering Elementary, Middle, and High School programming.

### ÉÉC Saint-Noël-Chabanel-Toronto

Grades PK to 6 (Assigned)  
30 Thistle Down Boulevard

### Our Lady of the Assumption Catholic School

Grades PK to 8 (Assigned)  
125 Glenmount Ave

### ÉSC Monseigneur-de-Charbonnel

Grades 7 to 12 (Assigned)  
110 Drewry Ave

### Marshall McLuhan Catholic Secondary School

Grades 9 to 12  
1107 Avenue Rd

## PRIVATE SCHOOLS

The private schools nearest to you are:



### Bialik Hebrew Day School

Grades K to 8  
2760 Bathurst Street

### Bnos Bais Yaakov High School

Grades 9 to 12  
2949 Bathurst Street

### Yeshiva Yesodei HaTorah

Grades PK to 8  
77 Glen Rush Boulevard

### Tiferes Bais Yaakov High School

Grades 9 to 12  
85 Stormont Avenue

## PARKS & REC.

This home is located in park heaven, with 4 parks and a long list of recreation facilities within a 20 minute walk from this address.

### Cortleigh Parkette

375 Cortleigh Blvd



### Chater Court Park

1 Chater Crt



### Viewmount Park

169 Viewmount Ave



### FACILITIES WITHIN A 20 MINUTE WALK

5 Playgrounds  
4 Tennis Courts  
3 Ball Diamonds  
1 Multi-Use Pad  
1 Sports Field  
1 Basketball Court  
1 Trail



## TRANSIT

Public transit is at this home's doorstep for easy travel around the city. The nearest street transit stop is only a minute walk away and the nearest rail transit stop is a 12 minute walk away.

### Nearest Rail Transit Stop

Glencairn Station



### Nearest Street Level Transit Stop

Glencairn Ave At  
Glenmount Ave



## SAFETY

With safety facilities in the area, help is always close by. Facilities near this home include a fire station, a police station, and a hospital within 4.27km.

### Sunnybrook Health Sciences Centre - Bayview Campus

2075 Bayview Ave

### Fire Station

476 Lawrence Ave W

### Police Station

1435 Eglinton Ave W

## CONVENIENCE

This home is located near everyday amenities to make your daily errands easier.

### Coffee

### Gym

### Grocery

### Gas Station



## HoodQ

Disclaimer: These materials have been prepared for shawn@hoodq.com and are not intended to solicit buyers or sellers currently under contract with a brokerage. By accessing this information you have agreed to our terms of service, which are hereby incorporated by reference. This information may contain errors and omissions. You are not permitted to rely on the contents of this information and must take steps to independently verify its contents with the appropriate authorities (school boards, governments etc.). As a recipient of this information, you agree not to hold us, our licensors or the owners of the information liable for any damages, however caused.

### \*\*\*SPECTACULAR CUSTOM-BUILT BUNGALOW WITH TWO SEPARATE IN LAW SUITES\*\*\*

Built In 2011, This Custom 2160 Sq Foot Amazing Bungalow Is Ready For You And Your Large Family Or For Those Looking For Something Extremely Rare And Special. An Entertainer's Dream, With An Open Concept Kitchen And Great Room Featuring A Stunning Floor To Ceiling Stone Wall Complete With Gas Fireplace And Built-In TV, Massive Centre Island, And Gourmet Appliances Are Just The Beginning. The Yard Is Private And A Wonderful Place To Spend The Summer Nights Complete With A Custom Cabana, Sauna And Washroom All Included As Well. The Detached Double Car Garage Can Be Used As A Workshop Or Just A Place To Get Away! Tons Of Built-In Shelving And Storage, Pot Lights, Speakers And A TV!

The Home Must Be Seen To Be Appreciated. The Main Floor Has Four Bedrooms (One Being Used As A Gym), Three Bathrooms, Potlights, Remote Blinds, Built In Speakers, Upgraded Mouldings, Built In Closet Organizers And So Much More. The Primary Bedroom Is Stunning, A Massive Walk-In Closet, And Wait Till You See The Ensuite – Stunning!

Perhaps The Most Interesting And Special Part Of The Home Is The Potential That It Has With The Basement. Not Only Is It Completely Finished, But Is Has Been Finished In Order To Allow You To Have Two Totally Separate Units With No Access Into The Main Part Of The Home, Completely Separate! Now, In The Event That You Didn't Want To Have The Basement As It Currently Is Laid Out, You Could Easily Have A Staircase Going From The 4th Bedroom (Office), Down To The Unit Below With Not Too Much Work Involved.

Please See The Attached List For Some Other Wonderful Features And Inclusions For This Fantastic Home.

Taxes: \$10,057.04 / 2020

Lot: 50 ft x 133.67 ft