

WELCOME TO

# 502 Heddle Crescent

[www.502Heddle.com](http://www.502Heddle.com)



**Marek Kloda**  
Broker



TEAM **ZOLD**

Your Home • Your Life • Your Realtors

*Working For You!*

905.731.2000  
[www.teamzold.com](http://www.teamzold.com)

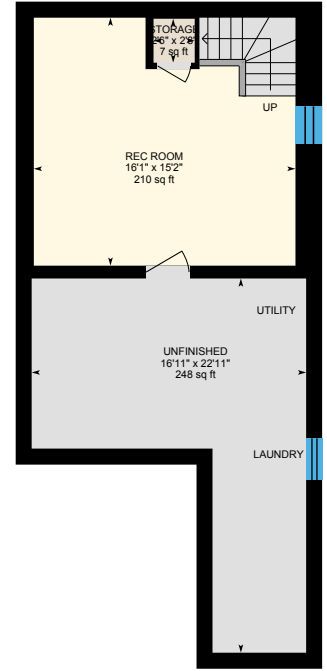
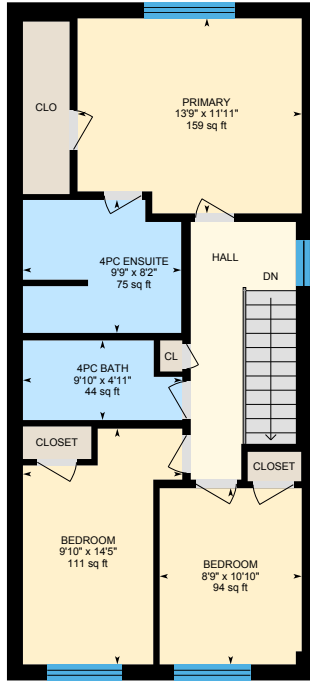
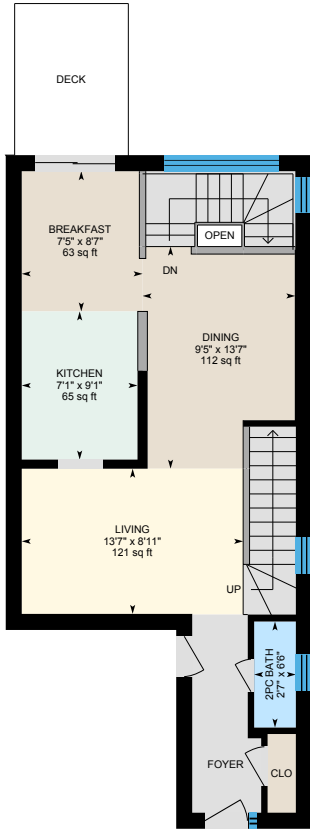


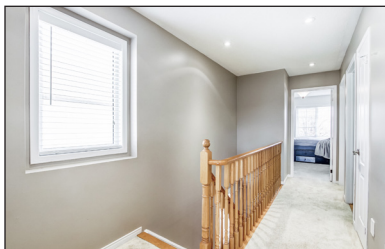
ROYAL LEPAGE  
**CHAIRMAN'S CLUB**  
NATIONAL TOP 1%  
LIFETIME MEMBER



**Shawn Zigelstein**  
Broker

# 502 Heddle Crescent, Newmarket





## PUBLIC SCHOOLS

Your neighbourhood is part of a community of Public Schools offering Elementary, Middle, and High School programming.

### Armitage Village PS

Designated Catchment School  
Grades PK to 8  
125 Savage Rd

### Sir William Mulock SS

Designated Catchment School  
Grades 9 to 12  
705 Columbus Way

### Mazo De La Roche PS

Designated Catchment School  
Grades 2 to 8  
860 Arnold Crescent

### ÉS Norval-Morrisseau

Designated Catchment School  
Grades 7 to 12  
51 Wright St

## CATHOLIC SCHOOLS

Your neighbourhood is part of a community of Catholic Schools offering Elementary, Middle, and High School programming.

### Notre Dame Catholic ES

Grades PK to 8 (Assigned)  
715 Kingsmere Ave

### ÉÉC Saint-Jean

Grades PK to 6 (Assigned)  
90 Walton Dr

### St. Maximilian Kolbe HS

Grades 9 to 12 (Assigned)  
278 Wellington St E

### ÉSC Renaissance

Grades 7 to 12 (Assigned)  
700 Bloomington Rd

## PRIVATE SCHOOLS

The private schools nearest to you are:



### Country Garden Montessori Academy

Grades PK to 12  
601 Newpark Blvd

### Pickering College

Grades PK to 12  
16945 Bayview Ave

### Aurora Montessori School

Grades PK to 8  
330 Industrial Pkwy N

### Innova Academy

Grades PK to 8  
1000 Gorham St

## PARKS & REC.

This home is located in park heaven, with 4 parks and a long list of recreation facilities within a 20 minute walk from this address.



### Audrie Sanderson Park

620 McBean Avenue



6 min



### Laurelwood Parkette

876 Shadrach Dr



7 min



### Art Ferguson Park

Bayview and Brooker Ridge



7 min

### FACILITIES WITHIN A 20 MINUTE WALK

4 Playgrounds  
2 Tennis Courts  
1 Ball Diamond  
1 Sports Field  
2 Basketball Courts  
4 Trails



## TRANSIT

Public transit is at this home's doorstep for easy travel around the city. The nearest street transit stop is only a minute walk away and the nearest rail transit stop is a 40 minute walk away.



### Nearest Rail Transit Stop

Newmarket GO



### Nearest Street Level Transit Stop

Bayview Av / Silken  
Laumann Dr



1 min

## SAFETY

With safety facilities in the area, help is always close by. Facilities near this home include a police station, a fire station, and a hospital within 2.99km.



### Southlake Regional Health Centre

596 Davis Dr



### Fire Station

984 Gorham St



### Police Station

240 Prospect Street

## CONVENIENCE

This home is located near everyday amenities to make your daily errands easier.



### Coffee



### Gym



### Grocery



### Gas Station

**HoodQ**

Disclaimer: These materials have been prepared for shawn@pearlzold.com and are not intended to solicit buyers or sellers currently under contract with a brokerage. By accessing this information you have agreed to our terms of service, which are hereby incorporated by reference. This information may contain errors and omissions. You are not permitted to rely on the contents of this information and must take steps to independently verify its contents with the appropriate authorities (school boards, governments etc.). As a recipient of this information, you agree not to hold us, our licensors or the owners of the information liable for any damages, howsoever caused.

## AMAZING, FIRST TIME HOME BUYER OR INVESTOR OPPORTUNITY FOR A SEMI-DETACHED HOME LOCATED IN HIGH DEMAND STONEHAVEN AREA!

Over \$50k In Upgrades!!! Freshly Painted With Tons Of Pot Lights, Open Concept! Combined Living/Dining Room With Hardwood Floors! Updated Kitchen With Breakfast Bar & Brand-New Stainless-Steel GE Appliances! Great Breakfast Area Leading To Updated Deck With South, Sunny Exposure! Spacious Primary Bedroom With Extra - Large Walk-In Closet, Spacious 4 Piece Ensuite With Soaker Tub! Rec Room In Finished Basement And So Much More! A Must-See Home! Close To Magna Sport Centre, Shoppers Plaza, Superstore, T&T, Sobeys, Gym And Restaurants! Near Future Go Station, Transit And Few Minutes From Hwy 404!!!

### Extras:

All Blinds & California Shutters (2012), Upgraded Light Fixtures (2020) Including Addition Of Outdoor Outlet At Front Entrance, All New Switches & Outlets Throughout The Home, Central Air, Brand-New Furnace (2022), Stainless-Steel GE Appliances (2022): Fridge, Flat-Top Convection Stove With Air Fryer, Built-In Dishwasher & Over The Range Microwave; Washing Machine (2020) Dryer (Repaired In 2022), Roof Shingles (2013), Interlock Front Walkway (2013), Deck (2013), Broadloom (2012), New Driveway July (2021), Smoothed Ceilings And Potlights. New Plumbing And Fixtures (2021), BBQ Gas Line, Upgraded Electrical Plus New Outdoor Light Fixtures & Front Interlock Reset In 2021, Security System And Cameras. Extra Fridge And Deep Freezer In Basement. Gas Lines Installed For Washer/Dryer And Stove.

Excluded: TVs With Brackets, Basement Sound Bar

Rental: HWT (\$41.12 plus HST)

Lot: 20.49 Ft x 117.62 Ft | Taxes: \$3,982.04/2021

Royal LePage Your Community Realty Brokerage does not warrant or guarantee the information in this feature sheet.

