

# 486 Bur Oak Avenue

[www.486BurOak.com](http://www.486BurOak.com)



ROYAL LEPAGE  
**CHAIRMAN'S CLUB**  
NATIONAL TOP 1%  
2012-2020

**Shawn Zigelstein**  
Broker

## TEAM ZOLD

Your Home • Your Life • Your Realtors

*Working For You!*

905.731.2000  
[www.teamzold.com](http://www.teamzold.com)

Your  
**Community**  
REALTY

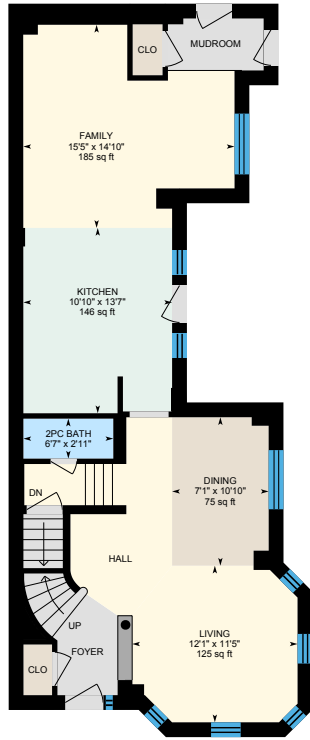
**ROYAL LEPAGE**

BROKERAGE INDEPENDENTLY OWNED & OPERATED

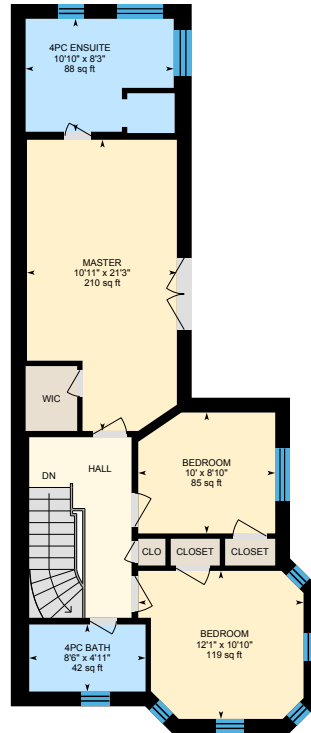


# 486 Bur Oak Avenue

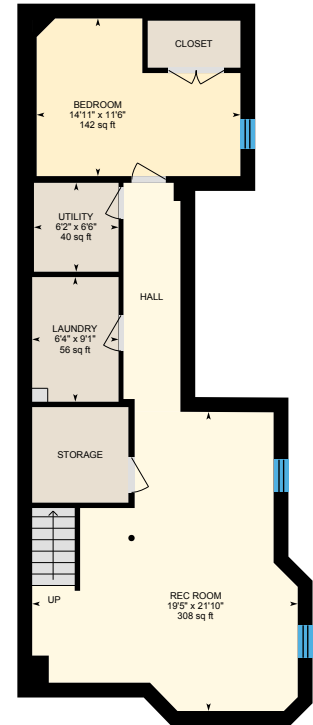
Main Level



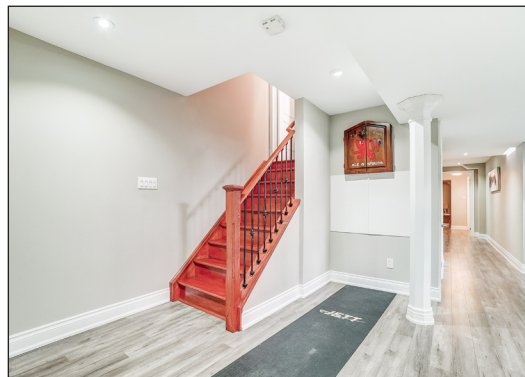
2nd Level



Lower Level









## PUBLIC SCHOOLS

Your neighbourhood is part of a community of Public Schools offering Elementary, Middle, and High School programming.

### Stonebridge PS

Designated Catchment School  
Grades PK to 8  
168 Stonebridge Dr

### Académie de la Moraine

Designated Catchment School  
Grades PK to 6  
115 George St

### ÉS Norval-Morrisseau

Designated Catchment School  
Grades 7 to 12  
51 Wright St

### Sir Wilfrid Laurier PS

Designated Catchment School  
Grades 2 to 8  
160 Hazelton Ave

### Pierre Elliott Trudeau HS

Designated Catchment School  
Grades 9 to 12  
90 Bur Oak Ave

## CATHOLIC SCHOOLS

Your neighbourhood is part of a community of Catholic Schools offering Elementary, Middle, and High School programming.

### All Saints Catholic ES

Grades PK to 8 (Assigned)  
130 Castlemore Ave

### ÉEC Sainte-Marguerite-Bourgeoys-Markham

Grades PK to 8 (Assigned)  
111 John Button Blvd

### St Augustine Catholic HS

Grades 9 to 12 (Assigned)  
2188 Rodick Rd

### ÉSC Renaissance

Grades 7 to 12 (Assigned)  
700 Bloomington Rd

## PRIVATE SCHOOLS

The private schools nearest to you are:

### Cambridge Academy

Grades 9 to 12  
5873 ON-7

### Unionville Montessori School

Grades PK to 6  
4486 16th Ave

### Wesley Christian Academy

Grades PK to 8  
22 Heritage Rd

### Alathena International Academy - Markham

Grades 9 to 12  
8515 McCowan Rd

## PARKS & REC.

This home is located in park heaven, with 4 parks and a long list of recreation facilities within a 20 minute walk from this address.



### Williamstown Park

Hartwood Pl



1 min

### Donald Clark Park

Hillwood St



4 min

### Frederick Peterson Park

Brookhaven Cres



5 min

### FACILITIES WITHIN A 20 MINUTE WALK

3 Playgrounds  
3 Basketball Courts  
1 Picnic Facilities  
1 Sports Field  
2 Trails  
1 Multi-Use Pad

## TRANSIT

Public transit is at this home's doorstep for easy travel around the city. The nearest street transit stop is only a minute walk away and the nearest rail transit stop is a 32 minute walk away.

**Nearest Rail Transit Stop**  
Centennial GO

**Nearest Street Level Transit Stop**  
Bur Oak Av / Stonebridge Dr 1 min

## SAFETY

With safety facilities in the area, help is always close by. Facilities near this home include a fire station, a police station, and a hospital within 5.3km.

**Markham Stouffville Hospital**  
381 Church St

**Fire Station**  
650 Bur Oak Ave

**Police Station**  
8700 McCowan Road

## CONVENIENCE

Daily errands are quick and easy in this neighbourhood, with 4 amenities within a 5 minute walk from this home.

**Coffee**

**Grocery**

**Gym**

**Gas Station**

**HoodQ**

Disclaimer: These materials have been prepared for shawn@teamzold.com and are not intended to solicit buyers or sellers currently under contract with a brokerage. By accessing this information you have agreed to our terms of service, which are hereby incorporated by reference. This information may contain errors and omissions. You are not permitted to rely on the contents of this information and must take steps to independently verify its contents with the appropriate authorities (school boards, governments etc.). As a recipient of this information, you agree not to hold us, our licensors or the owners of the information liable for any damages, howsoever caused.



\*\*\*FANTASTIC HOME ON A EXTRA LARGE CORNER LOT\*\*\*

Very Rare End Unit Featuring A Great Sized Side Yard With Stone Patio, Attached Double Car Garage, Open Concept Layout, Huge Master Suite With Renovated Ensuite, And A Professionally Finished Basement With An Extra Bedroom And Full Recreation Room That Is Perfect For Entertaining. This Home Is A Close Walk To Top Schools, Parks, Public Transit, Shopping, Restaurants, And So Much More.

Not Often Can You Find Such A Well Cared For Home In Such A Great Area. This Home Has Been Loved By The Original Owners And Has Lots Of Upgrades That Must Be Seen To Be Fully Appreciated. Looking Forward To Having You Visit This Great Home

Inclusions: Stainless Steel Appliances (Frigidaire Slide In Flat Top Stove, LG Built In Dishwasher, Kitchen Aid Superba Side By Side Fridge, Air King Hood Fan), Sony Kitchen Radio, Garage Door Opener and 2 Remotes, Furnace, Air Conditioner, Alarm System (not monitored), All Window Coverings, All Electrical Light Fixtures, All Pot Lights, All Ceiling Fans.

Exclusions: Washer, Dryer, Basement Fridge and Freezer, TV's and Brackets

Taxes: \$4,328.23/2020

Lot: 21.82 ft x 80.00 ft (Irregular)