

467 Bartholomew Drive

www. 467Bartholomew.com



Your Community
REALTY
ROYAL LEPAGE
BROKERAGE INDEPENDENTLY OWNED & OPERATED

Marek Kloda
Broker

TEAM **ZOLD**

Your Home • Your Life • Your Realtors

Working For You!

905.731.2000
www.teamzold.com

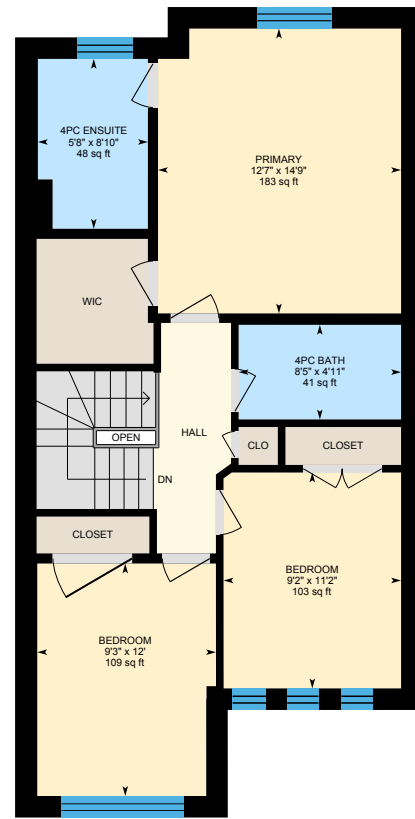
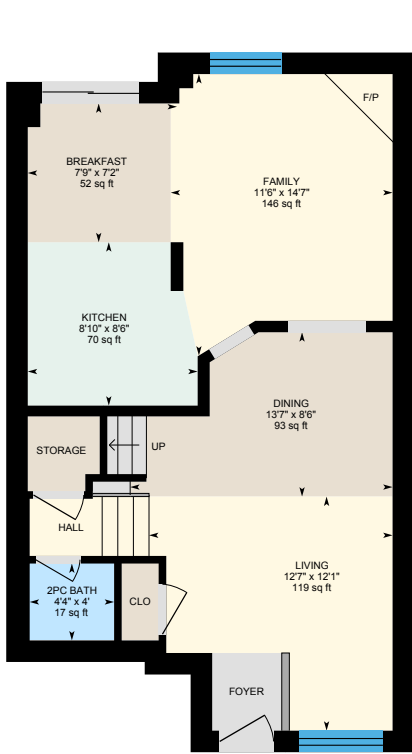


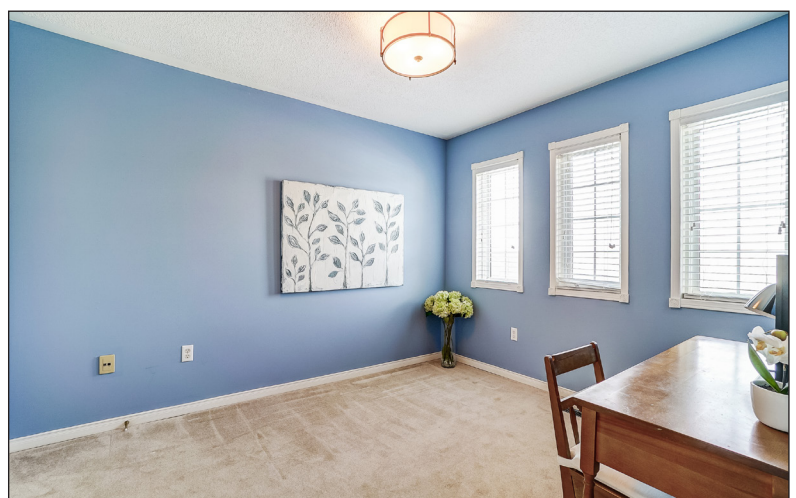
ROYAL LEPAGE
CHAIRMAN'S CLUB
NATIONAL TOP 1%
2012-2021

Shawn Zigelstein
Broker



467 Bartholomew Dr, Newmarket





PUBLIC SCHOOLS

Your neighbourhood is part of a community of Public Schools offering Elementary, Middle, and High School programming.

Clearmeadow PS

Designated Catchment School
Grades PK to 8
200 Clearmeadow Blvd

Sir William Mulock SS

Designated Catchment School
Grades 9 to 12
705 Columbus Way

Poplar Bank PS

Designated Catchment School
Grades 1 to 8
400 Woodspring Ave

ÉS Norval-Morrisseau

Designated Catchment School
Grades 7 to 12
51 Wright St

ALTERNATIVE & SPECIAL SCHOOLS

Nearby alternative and special education schools include:

The Lighthouse Learning and Development

Grades K to 12
219 Old Yonge St

The Lighthouse Learning and Development

Grades K to 12
219 Old Yonge St

CATHOLIC SCHOOLS

Your neighbourhood is part of a community of Catholic Schools offering Elementary, Middle, and High School programming.

St Nicholas Catholic ES

Grades PK to 8 (Assigned)
480 Keith Ave

ÉÉC Saint-Jean

Grades PK to 6 (Assigned)
90 Walton Dr

Sacred Heart Catholic HS

Grades 9 to 12 (Assigned)
908 Lemar Rd

ÉSC Renaissance

Grades 7 to 12 (Assigned)
700 Bloomington Rd

PRIVATE SCHOOLS

The private schools nearest to you are:



Pickering College

Grades PK to 12
16945 Bayview Ave

Aurora Montessori School

Grades PK to 8
330 Industrial Pkwy N

St. Andrew's College

Grades 5 to 12
15800 Yonge St

Country Garden Montessori Academy

Grades PK to 12
601 Newpark Blvd

PARKS & REC.

This home is located in park heaven, with 4 parks and a long list of recreation facilities within a 20 minute walk from this address.



Seneca Cook Parkette

325 Clearmeadow Blvd



Clare Salisbury Park

277 Clearmeadow Blvd



George Luesby Park

375 Ritas Ave




FACILITIES WITHIN A 20 MINUTE WALK

3 Playgrounds 2 Sports Fields
2 Basketball Courts 2 Trails
1 Multi-Use Pad

TRANSIT

Public transit is at this home's doorstep for easy travel around the city. The nearest street transit stop is only a minute walk away and the nearest rail transit stop is a 43 minute walk away.

 **Nearest Rail Transit Stop**
Newmarket GO

 **Nearest Street Level Transit Stop**
Clearmeadow Blvd /
Bartholomew Dr



SAFETY

With safety facilities in the area, help is always close by. Facilities near this home include a fire station, a police station, and a hospital within 3.64km.

 **Southlake Regional Health Centre**
596 Davis Dr

 **Fire Station**
125 McCaffrey Rd

 **Police Station**
240 Prospect Street

CONVENIENCE

This home is located near everyday amenities to make your daily errands easier.

 **Coffee**  **Gym**
 **Grocery**  **Gas Station**



HoodQ

Disclaimer: These materials have been prepared for show@hoodq.com and are not intended to solicit buyers or sellers currently under contract with a brokerage. By accessing this information you have agreed to our terms of service, which are hereby incorporated by reference. This information may contain errors and omissions. You are not permitted to rely on the contents of this information and must take steps to independently verify its contents with the appropriate authorities (school boards, governments etc.). As a recipient of this information, you agree not to hold us, our licensors or the owners of the information liable for any damages, howsoever caused.

First Time Home Buyer's Dream! Freehold 3 Bedroom Townhome in Summerhill Estates! Freshly Painted! South Exposure w/Hardwood and Gas Fireplace, Open Concept Kitchen w/ Breakfast Area & w/out to Sun-filled Backyard, Master w/w-in Closet & 4 Pc Ensuite. Spacious Unfinished Basement Ready for Your Finishing Touches, Brand New Furnace! Minutes To School, Upper Canada Shopping, Transit, HWY 400 & 404!

Extras:

All Existing Appliances: Samsung Stainless Steel French Door Fridge with Bottom Freezer, Panasonic Stainless Steel Microwave, Whirlpool White Flat Top Stove, Broan White Range Hood, Kenmore White Built-In Dishwasher, White Washer/Dryer, All Electrical Light Fixtures, All Window Coverings, C/Air, Furnace, Garage Door Opener and Remote.

Lot: 20.03 ft x 114.49 ft

Taxes: \$3,672.06/2022