

414 Alper Street Richmond Hill

www.414Alper.com



ROYAL LEPAGE
CHAIRMAN'S CLUB
NATIONAL TOP 1%
2012-2020

Shawn Zigelstein
Broker

TEAM ZOLD

Your Home • Your Life • Your Realtors

Working For You!

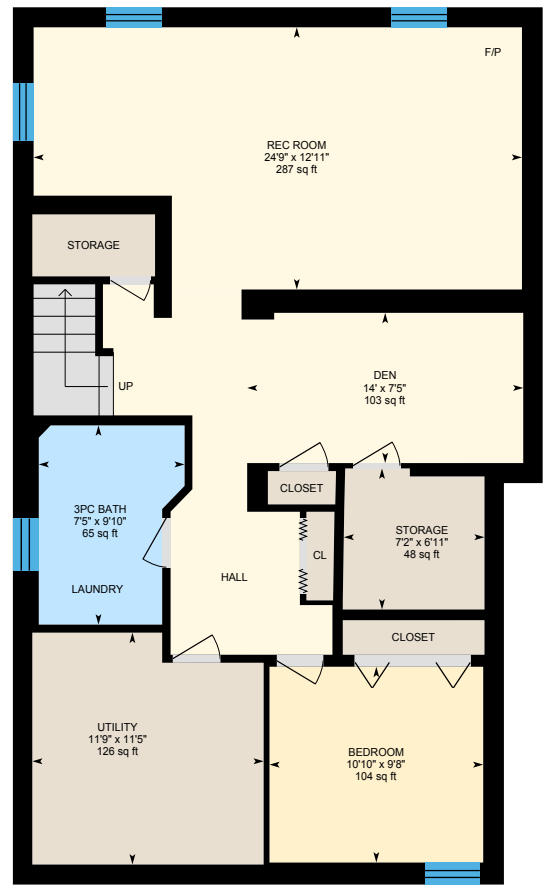
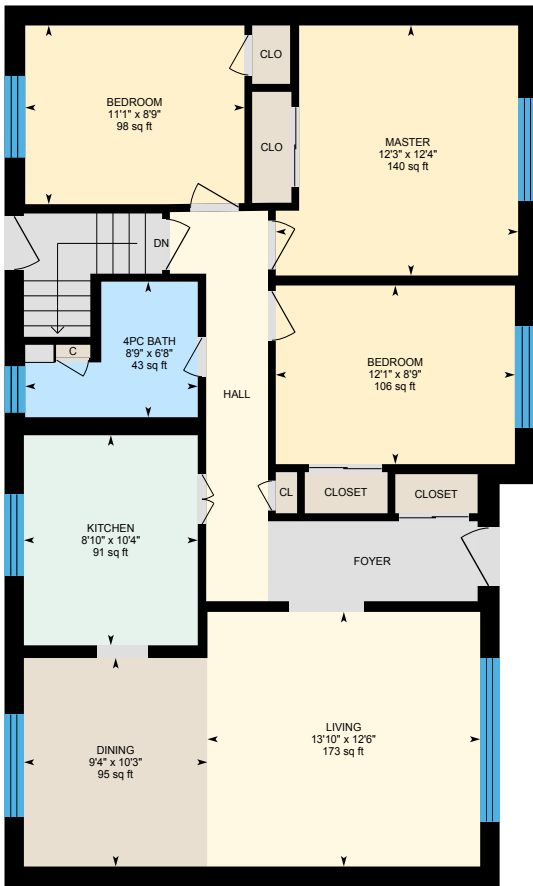
905.731.2000
www.teamzold.com

Your
Community[™]
REALTY



BROKERAGE INDEPENDENTLY OWNED & OPERATED

414 Alper Street, Richmond Hill





PUBLIC SCHOOLS

Your neighbourhood is part of a community of Public Schools offering Elementary, Middle, and High School programming.

Beverly Acres PS

Designated Catchment School
Grades 4 to 8
283 Neal Dr

Crosby Heights PS

Designated Catchment School
Grades PK to 8
190 Neal Dr

Bayview SS

Designated Catchment School
Grades 9 to 12
10077 Bayview Ave

Michaëlle Jean PS

Designated Catchment School
Grades 1 to 3
320 Shirley Dr

Académie de la Moraine

Designated Catchment School
Grades PK to 6
115 George St

ÉS Norval-Morriseau

Designated Catchment School
Grades 7 to 12
51 Wright St

ALTERNATIVE & SPECIAL SCHOOLS

Nearby alternative and special education schools include:

YRDSB Continuing Education

Grades 9 to 12
11160 Yonge St



CATHOLIC SCHOOLS

Your neighbourhood is part of a community of Catholic Schools offering Elementary, Middle, and High School programming.

Our Lady Help of Christians Catholic ES

Grades PK to 8 (Assigned)
275 Redstone Rd

ÉEC Le-Petit-Prince

Grades PK to 6 (Assigned)
79 Avro Rd

Jean Vanier HS

Grades 9 to 12 (Assigned)
10475 Bayview Ave

ÉSC Renaissance

Grades 7 to 12 (Assigned)
700 Bloomington Rd

PRIVATE SCHOOLS

The private schools nearest to you are:



TMS School - Elgin Mills

Grades 9 to 12
500 Elgin Mills Rd E

Holy Trinity Private School

Grades PK to 12
11300 Bayview Ave

Alpha Star High School

Grades 9 to 12
10670 Yonge St

Beacon Mile Academy

Grades 9 to 12
10620 Yonge St #201

PARKS & REC.

This home is located in park heaven, with 4 parks and a long list of recreation facilities within a 20 minute walk from this address.



Beverly Acres Park
Elgin Mills Rd E and Bayview Ave
2 min



Skopit Park
Neal Dr and Skopit Rd
3 min



Leno Park
Woodrider St and Rose Branch Dr
9 min



FACILITIES WITHIN A 20 MINUTE WALK

3 Playgrounds
1 Basketball Court
2 Trails

1 Sports Field
1 Ball Diamond
2 Picnic Facilities

TRANSIT

Public transit is at this home's doorstep for easy travel around the city. The nearest street transit stop is only a 3 minute walk away and the nearest rail transit stop is a 27 minute walk away.

Nearest Rail Transit Stop
Richmond Hill GO

Nearest Street Level Transit Stop
Elgin Mills Rd / Bayview Av
3 min

SAFETY

With safety facilities in the area, help is always close by. Facilities near this home include a fire station, a police station, and a hospital within 3.28km.

Mackenzie Richmond Hill Hospital
10 Trench St

Fire Station
1365 Elgin Mills Road East

Police Station
171 Major Mackenzie Drive West

CONVENIENCE

This home is located near everyday amenities to make your daily errands easier.

Coffee **Gym**
Grocery **Gas Station**



HoodQ

Disclaimer: These materials have been prepared for shawn@hoodq.com and are not intended to solicit buyers or sellers currently under contract with a brokerage. By accessing this information you have agreed to our terms of service, which are hereby incorporated by reference. This information may contain errors and omissions. You are not permitted to rely on the contents of this information and must take steps to independently verify its contents with the appropriate authorities (school boards, governments etc.). As a recipient of this information, you agree not to hold us, our licensors or the owners of the information liable for any damages, howsoever caused.



OPPORTUNITY IN PRIME RICHMOND HILL

Attention First Time Home Buyers, Renovators, And Contractors, Your Dream Is Now A Reality. This Corner Lot Bungalow Is Ready For Your Personal Touch. Maintained By The Long Term Owners, This Great Home Features A Double Car Garage, Wonderful Size Yard, 3 Nice Sized Bedrooms, And A Finished Basement With Separate Entrance. A Close Walk To Top Ranked Schools, Go Train, Restaurants And Shopping - Come For A Visit Today.

This Home Has Some Great Bones And Can Be Great For You And Your Family. A Little Work And Its Perfect! Tough To Get Into The Market Right Now So Here Is Your Chance. So Much Potential On A Great Lot, Make It Your Very Own Dream Home.

Taxes: \$4,878.71/2020

Lot: 35.26 ft x 100.18 ft (Irregular As Per Survey)

Royal LePage Your Community Realty Brokerage does not warrant or guarantee the information in this feature sheet.