

38 Waterstone Way

www.38Waterstone.com



Vanessa Oliveira
Sales Representative



TEAM **ZOLD**

Your Home • Your Life • Your Realtors

Working For You!

905.731.2000
www.teamzold.com

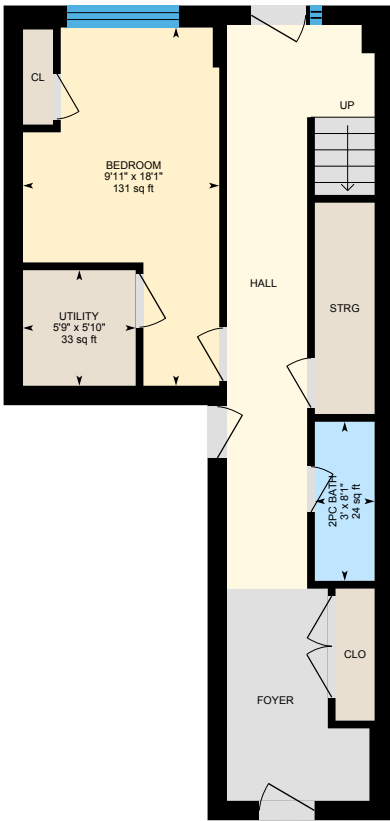


ROYAL LEPAGE
CHAIRMAN'S CLUB
NATIONAL TOP 1%
2012-2020

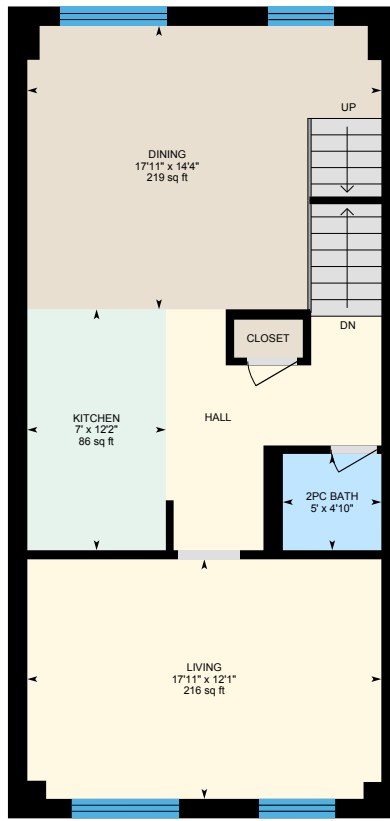
Shawn Zigelstein
Broker



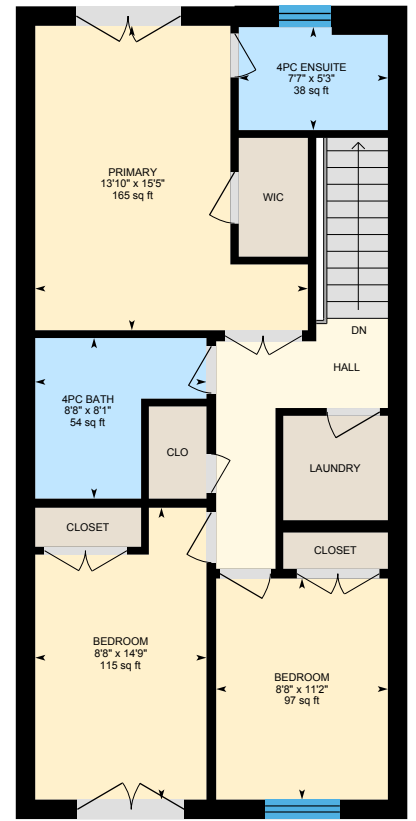
38 Waterstone Way, Whitby



Main Floor



2nd Floor



3rd Floor





38 Waterstone Way, Whitby, ON, L1N0M3

PUBLIC SCHOOLS

Your neighbourhood is part of a community of Public Schools offering Elementary, Middle, and High School programming.

Captain Michael VandenBos PS

Designated Catchment School
Grades PK to 8
3121 Country Ln

Donald A. Wilson SS

Designated Catchment School
Grades 9 to 12
681 Rossland Rd W

Élém Antonine Maillet

Designated Catchment School
Grades PK to 6
615 Ridgeway Ave

ÉC Ronald-Marion

Designated Catchment School
Grades 7 to 12
2235 Brock Rd

ALTERNATIVE & SPECIAL SCHOOLS

Nearby alternative and special education schools include:

Father Donald MacLellan Catholic SS

Grades 9 to 12
1500 Hopkins St

One Care Academy

Grades Ungraded
32 Elgin St E



CATHOLIC SCHOOLS

Your neighbourhood is part of a community of Catholic Schools offering Elementary, Middle, and High School programming.

St. John the Evangelist Catholic School

Grades PK to 8 (Assigned)
1103 Giffard St

ÉEC Jean-Paul II

Grades PK to 6 (Assigned)
1001 Hutchison Ave

All Saints Catholic SS

Grades 7 to 12 (Assigned)
3001 Country Ln

ÉSC Saint-Charles-Garnier

Grades 7 to 12 (Assigned)
4101 Baldwin St S

PRIVATE SCHOOLS

The private schools nearest to you are:



Blyth Academy - Whitby

Grades 6 to 12
209 Dundas St E

Hatch House Montessori

Grades PK to 8
301 Byron St S

Trafalgar Castle School

Grades 4 to 12
401 Reynolds St

Whitby Montessori & Elementary School

Grades PK to 8
95 Taunton Rd E

PARKS & REC.

This home is located in park heaven, with 4 parks and a long list of recreation facilities within a 20 minute walk from this address.



Wallace Park

61 Wallace Drive

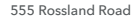


4 min



Whitby Civic Recreation Complex

555 Rossland Road East



5 min



Whitby Civic Park

30 Bassett Boulevard



5 min



FACILITIES WITHIN A 20 MINUTE WALK

- | | |
|--------------------|----------------|
| 1 Pool | 2 Playgrounds |
| 1 Wading Pool | 1 Sports Field |
| 2 Tennis Courts | 1 Ball Diamond |
| 1 Community Centre | 1 Trail |
| 1 Fitness Room | 1 Gym |
| 1 Sauna | |



TRANSIT

Public transit is at this home's doorstep for easy travel around the city. The nearest street transit stop is only a minute walk away and the nearest rail transit stop is a 47 minute walk away.



Nearest Rail Transit Stop

Whitby



Nearest Street Level Transit Stop

Brock St. @ Palmerston Ave.



1 min

SAFETY

With safety facilities in the area, help is always close by. Facilities near this home include a police station, a fire station, and a hospital within 6.61 km.



Lakeridge Health - Oshawa Site

1 Hospital Crt



Fire Station

734 Dundas Street West



Police Station

605 Rossland Road East

CONVENIENCE

This home is located near everyday amenities to make your daily errands easier.



Coffee



Gym



Grocery



Gas Station



HoodQ

Disclaimer: These materials have been prepared for shawn@hoodq.com and are not intended to solicit buyers or sellers currently under contract with a brokerage. By accessing this information you have agreed to our terms of service, which are hereby incorporated by reference. This information may contain errors and omissions. You are not permitted to rely on the contents of this information and must take steps to independently verify its contents with the appropriate authorities (school boards, governments etc.). As a recipient of this information, you agree not to hold us, our licensors or the owners of the information liable for any damages, howsoever caused.

THIS AMAZING 4 BEDROOM TOWNHOUSE IS THE PERFECT FAMILY HOME, RIGHT IN THE HEART OF WHITBY!

Move Right In And Enjoy The Bright, Open Concept Layout Featuring 9Ft Ceilings. This Home Is Incredibly Spacious & Functional With A Finished Bedroom & Bathroom On The Ground Floor, Perfect For An In Law Suite. Enjoy Entertaining In A Large Kitchen With A Peninsula Breakfast Bar & Eating Area. 3 Blocks Away From Palmerston Park & Trails, Steps From Public Transit, Close To Great Schools & Amenities. This One Is A Must See, Don't Miss Out!

Extras: All Electrical Light Fixtures, All Existing Stainless Steel Appliances: Whirlpool Fridge, Whirlpool Stove, Whirlpool Microwave Hood Fan, Whirlpool Dishwasher, White Whirlpool Washer & Dryer, Curtain Rods, Blinds, Shelving In Garage, Shower Curtains, Fire Extinguisher, Furnace, A/C, Garage Door Opener & Remote.

Rental: Tankless Hot Water Tank - \$43/Month

Excluded: Curtains, Shower Head In Primary Bedroom, TV Wall Mounts, Shelving In Main Floor Bedroom, Bar Stools, Mirror & Clocks.

POTL Fees: \$152.16/month (Include Water, Snow & Garbage Removal).

Lot: 17.45 ft x 89.00 ft ~ Taxes: \$4,154.70/ month

Royal LePage Your Community Realty does not warrant or guarantee the information on this feature sheet.