

WELCOME TO

373 Gilpin Drive

www.373Gilpin.com



Marek Kloda
Broker



TEAM **ZOLD**

Your Home • Your Life • Your Realtors

Working For You!

905.731.2000
www.teamzold.com

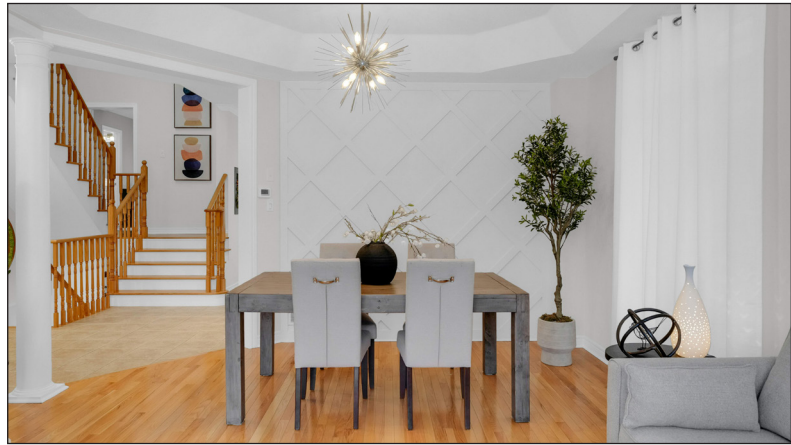


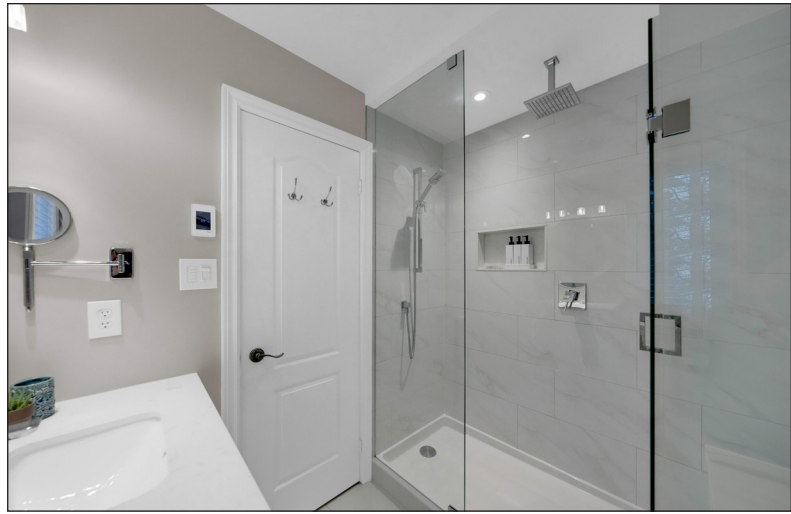
ROYAL LEPAGE
CHAIRMAN'S CLUB
NATIONAL
TOP 1%
LIFETIME MEMBER



Shawn Zigelstein
Broker

373 Gilpin Dr, Newmarket





PUBLIC SCHOOLS

Your neighbourhood is part of a community of Public Schools offering Elementary, Middle, and High School programming.

Poplar Bank PS

Designated Catchment School
Grades 3 to 8
400 Woodspring Ave

Phoebe Gilman PS

Designated Catchment School
Grades PK to 8
145 Harvest Hills Blvd

Dr John M Denison SS

Designated Catchment School
Grades 9 to 12
135 Bristol Rd

ÉS Norval-Morrisseau

Designated Catchment School
Grades 7 to 12
51 Wright St

ALTERNATIVE & SPECIAL SCHOOLS

Nearby alternative and special education schools include:

The Lighthouse Learning and Development

Grades K to 12
222 Edward St

The Lighthouse Learning and Development

Grades K to 12
222 Edward St



PARKS & REC.

This home is located in park heaven, with 4 parks and a long list of recreation facilities within a 20 minute walk from this address.



Environmental Park

332 Woodspring Ave



3 mins

Woodland Hill Labyrinth Park

45 Ford Wilson Boulevard



7 mins

Bonshaw Avenue Park

126 Bonshaw Ave



6 mins

FACILITIES WITHIN A 20 MINUTE WALK

4 Playgrounds
2 Basketball Courts
4 Sports Fields
1 Splash Pad
1 Sports Court
2 Trails
1 Arts/Performance Facility

TRANSIT

Public transit is at this home's doorstep for easy travel around the city. The nearest street transit stop is only a 3 minute walk away and the nearest rail transit stop is a 37 minute walk away.



Nearest Rail Transit Stop

Newmarket GO



Nearest Street Level Transit Stop

Woodspring Av / Gilpin Dr



3 mins

SAFETY

With safety facilities in the area, help is always close by. Facilities near this home include a fire station, a hospital, and a police station within 3.39km.



Southlake Regional Health Centre

596 Davis Dr



Fire Station

125 McCaffrey Rd



Police Station

240 Prospect Street

Your Ravine Lifestyle Awaits

Located On One Of Woodland Hills' Most Coveted Streets, This Exceptional Custom-Built Home Offers A Rare Opportunity To Own A Premium 50-Foot Wooded Ravine Lot Backing Directly Onto The Trails And Natural Beauty Of Newmarket Boardwalk Park. Featuring Over 3,000 Square Feet Of Finished Living Space And Close To \$160,000 In Upgrades, This Residence Delivers Outstanding Scale, Flexibility, And Lifestyle Appeal.

A Six-Car Asphalt Driveway And Elegant Interlock Walkway Lead To A Beautifully Appointed Interior Highlighted By 9-Foot Ceilings, Crown Moulding, And Timeless Wainscoting. The Unique Multi-Level Layout Is Ideal For Large Or Multi-Generational Families, Offering Two Primary Suites And An Abundance Of Versatile Living Spaces. At The Heart Of The Home, The Refreshed Open-Concept Kitchen Features Quartz Countertops, Updated Cabinetry, Quality Stainless Steel Appliances, And A Dramatic Picture Window Overlooking The Ravine, Bringing The Beauty Of The Forest Indoors Year-Round.

The Family Room And Lower Level Walk Out To A Private Backyard Retreat With A Tiered Deck, Covered Porch, And Fire Pit, All Surrounded By Mature Trees And Natural Privacy. Enjoy Close By Access To Scenic Walking, Biking, And Hiking Trails While Remaining Just Minutes To Shopping And Dining At Upper Canada Mall, The GO Train, Local Bus Routes And VIVA Transit, And Centrally Located Between Highways 404 And 400.

This Is A Rare Ravine Offering In The Heart Of Woodland Hills — Where Nature, Space, And Convenience Come Together To Create A Perfect Nature Retreat In The City.

Inclusions: All Existing Stainless Steel Appliances: Samsung French Door Fridge, Bosh Built-In Dishwasher, Danby Wine Fridge, GE Flat Top Stove, Samsung Over the Range Microwave, White GE Washer and Dryer, All Window Coverings, All Electrical Light Fixtures, Indoor Wet Built-In Sauna, Garage Door Openers with Remotes, Furnace, Nflisk Central Vac and all related attachments, Water Softener, AC.

Exclusions: Hot Tub, TVs, Patio Furniture

Taxes - \$7,044/2025 | Lot: 49.97 ft. x 80.55 ft (irregular)

Royal LePage Your Community Realty Brokerage does not warrant or guarantee the information in this feature sheet.

