

Welcome to 350 Red Maple Road #818



ROYAL LEPAGE
CHAIRMAN'S CLUB
NATIONAL TOP 1%
2012-2020

Shawn Zigelstein
Broker

TEAM **ZOLD**

Your Home • Your Life • Your Realtors

Working For You!

905.731.2000
www.teamzold.com

Your **Community**[™]
REALTY

ROYAL LEPAGE

BROKERAGE INDEPENDENTLY OWNED & OPERATED

350 Red Maple Road, Unit 818, Richmond Hill





PUBLIC SCHOOLS

Your neighbourhood is part of a community of Public Schools offering Elementary, Middle, and High School programming.

Red Maple PS

Designated Catchment School
Grades PK to 8
155 Red Maple Rd

Académie de la Moraine

Designated Catchment School
Grades PK to 6
115 George St

ÉS Norval-Morrisseau

Designated Catchment School
Grades 7 to 12
51 Wright St

Adrienne Clarkson PS

Designated Catchment School
Grades 2 to 8
68 Queens College Dr

Langstaff SS

Designated Catchment School
Grades 9 to 12
106 Garden Ave

CATHOLIC SCHOOLS

Your neighbourhood is part of a community of Catholic Schools offering Elementary, Middle, and High School programming.

St John Paul II Catholic ES

Grades PK to 8 (Assigned)
155 Red Maple Rd

ÉÉC Le-Petit-Prince

Grades PK to 6 (Assigned)
79 Avro Rd

St Robert Catholic HS

Grades 9 to 12 (Assigned)
8101 Leslie St

ÉSC Renaissance

Grades 7 to 12 (Assigned)
700 Bloomington Rd

PRIVATE SCHOOLS

The private schools nearest to you are:



Jingbao Bilingual Montessori School

Grades PK to 3
265 16th Ave

Quantum Academy

Grades 1 to 12
9555 Yonge St

Richmond Hill Montessori Elementary School

Grades PK to 8
189 Weldrick Rd E

TMS School - Bayview

Grades PK to 8
8569 Bayview Ave

PARKS & REC.

This home is located in park heaven, with 4 parks and 9 recreation facilities within a 20 minute walk from this address.



Red Maple Parkette

Red Maple Rd and Colston Ct



1 min

Grace Lawrence Parkette

59 Ellesmere St



5 min

Junction Parkette

Revelstoke Ct. and Red Maple Rd



3 min

FACILITIES WITHIN A 20 MINUTE WALK

4 Playgrounds

1 Trail

4 Basketball Courts

TRANSIT

Public transit is at this home's doorstep for easy travel around the city. The nearest street transit stop is only a minute walk away and the nearest rail transit stop is a 20 minute walk away.

Nearest Rail Transit Stop

Langstaff GO



20 min

Nearest Street Level Transit Stop

Red Maple Rd / Colston Ct



1 min

SAFETY

With safety facilities in the area, help is always close by. Facilities near this home include a fire station, a police station, and a hospital within 2.78km.

Mackenzie Richmond Hill Hospital

10 Trench St

Fire Station

150 High Tech Road

Police Station

171 Major Mackenzie Drive West

CONVENIENCE

This home is located near everyday amenities to make your daily errands easier.

Coffee



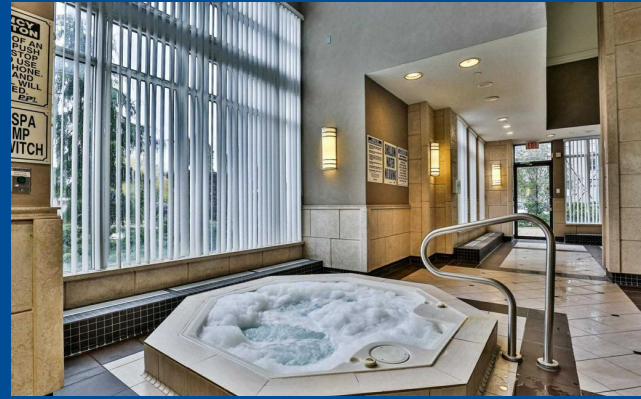
Gym



Grocery



Gas Station



HoodQ

Disclaimer: These materials have been prepared for shawn@hazard.com and are not intended to solicit buyers or sellers currently under contract with a brokerage. By accessing this information you have agreed to our terms of service, which are hereby incorporated by reference. This information may contain errors and omissions. You are not permitted to rely on the contents of this information and must take steps to independently verify its contents with the appropriate authorities (school boards, governments etc.). As a recipient of this information, you agree not to hold us, our licensors or the owners of the information liable for any damages, however caused.



WELCOME HOME TO THE VINEYARDS IN RICHMOND HILL

This Wonderfully Maintained 1Bedroom Condo Unit Shows to Perfection And You Will Fall In Love Once You Walk Through The Door. This Unit Features Stunning Dark Hardwood Floors, 9 Ft Ceilings, Open Concept Layout, A Wonderful Balcony With A Clear North West View To Watch The Sunsets. This Impeccably Clean Complex Has A World Class Rec Centre With Indoor Pool, Tennis Courts & So Much More!!

Extras: All Light Fixtures (unless excluded), All Window Coverings, All Existing Appliances: Whirlpool White Fridge, Whirlpool White Stove, Whirlpool White Built-In Dishwasher, LG Stainless Steel Built-In Microwave, GE Stackable White Washer and Dryer, 2 Fobs, One Garage Door Opener, Patio Tiles.

Excluded: Dining Room Light Fixture.

Taxes: \$1,665.43/2020

Maintenance Fees: \$478.26/month

Royal LePage Your Community Realty Brokerage does not warrant or guarantee the information in this feature sheet.