

438 Kenneth Ave #3

www.438Kenneth.com



ROYAL LEPAGE
CHAIRMAN'S CLUB
NATIONAL TOP 1%
2012-2019

Shawn Zigelstein
Broker

TEAM **ZOLD**

Your Home • Your Life • Your Realtors

Working For You!

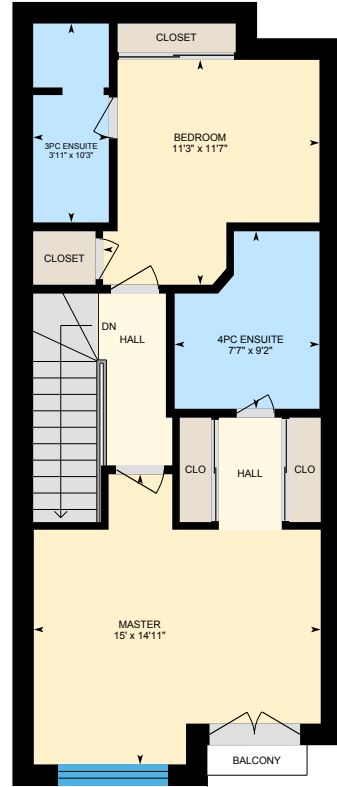
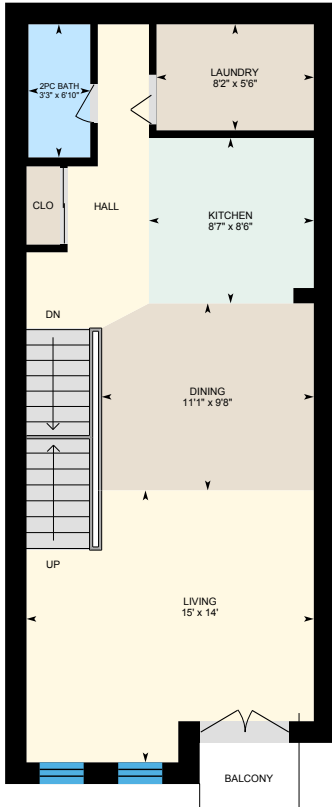
905.731.2000
www.teamzold.com

Your **Community**[™]
REALTY



BROKERAGE INDEPENDENTLY OWNED & OPERATED

438 Kenneth Ave #3





PUBLIC SCHOOLS

Your neighbourhood is part of a community of Public Schools offering Elementary, Middle, and High School programming.

McKee Public School

Designated Catchment School
Grades PK to 5
35 Church Ave

É Éléon Paul-Demers

Designated Catchment School
Grades PK to 6
100 Ravel Rd

Cummer Valley Middle School

Designated Catchment School
Grades 6 to 8
70 Maxome Ave

Earl Haig Secondary School

Designated Catchment School
Grades 9 to 12
100 Princess Ave

ÉÉ Étienne-Brûlé

Designated Catchment School
Grades 7 to 12
300 Banbury Rd

Other Local Schools

Claude Watson School for the Arts
Grades 4 to 8
130 Doris Ave

ALTERNATIVE & SPECIAL SCHOOLS

Nearby alternative and special education schools include:

Drewry Secondary School

Grades 9 to 12
70 Drewry Ave

Avondale Elementary Alternative School

Grades PK to 8
171 Avondale Ave



CATHOLIC SCHOOLS

Your neighbourhood is part of a community of Catholic Schools offering Elementary, Middle, and High School programming.

ÉSC Monseigneur-de-Charbonnel

Grades 7 to 12 (Assigned)
110 Drewry Ave

Blessed Trinity Catholic School

Grades PK to 8 (Assigned)
3205 Bayview Ave

ÉÉC Sainte-Madeleine

Grades PK to 6 (Assigned)
1 Ness Dr

St. Cyril Catholic School

Grades PK to 8
18 Kempford Blvd

PRIVATE SCHOOLS

The private schools nearest to you are:



Apollo High School

Grades 9 to 12
5467 Yonge St

Nobel Academy

Grades 9 to 12
5635 Yonge St

FutureSkills High School

Grades 9 to 12
5635 Yonge Street #204

Elpis College

Grades 9 to 12
77 Finch Avenue West #205

PARKS & REC.

This home is located in park heaven, with 4 parks and 7 recreation facilities within a 20 minute walk from this address.



Kenneth Park

417 Kenneth Ave



1 min

Bishop Park

45 Bishop Ave



5 min

Northtown Park

435 Doris Ave



3 min

FACILITIES WITHIN A 20 MINUTE WALK

4 Playgrounds 2 Trails
1 Picnic Facilities

TRANSIT

Public transit is at this home's doorstep for easy travel around the city. The nearest street transit stop is only a 3 minute walk away and the nearest rail transit stop is a 6 minute walk away.

Nearest Rail Transit Stop

Finch Station



6 min

Nearest Street Level Transit Stop

Finch Ave East At
Kenneth Ave



3 min

SAFETY

With safety facilities in the area, help is always close by. Facilities near this home include a fire station, a police station, and a hospital within 3.9km.

North York General Hospital

4001 Leslie St

Fire Station

12 Canterbury Pl

Police Station

30 Ellerslie Ave

CONVENIENCE

This home is located near everyday amenities to make your daily errands easier.



Coffee



Gym



Grocery



Gas Station



Disclaimer: These materials have been prepared for shawn@hoodq.com and are not intended to solicit buyers or sellers currently under contract with a brokerage. By accessing this information you have agreed to our terms of service, which are hereby incorporated by reference. This information may contain errors and omissions. You are not permitted to rely on the contents of this information and must take steps to independently verify its contents with the appropriate authorities (school boards, governments etc.). As a recipient of this information, you agree not to hold us, our licensors or the owners of the information liable for any damages, howsoever caused.



FANTASTIC EXECUTIVE CONDO TOWNHOME STEPS TO YONGE STREET

This Updated Unit A Wonderful Open Concept Layout, Gourmet Kitchen With Stainless Steel Appliances, Hardwood Floors, Wrought Iron Railings, Master Bedroom With Cathedral Ceiling, Pot Lights, And So Many More Great Features. This Very Rare Unit Also Has 2 Parking Spots And With Its East Facing Views Is Nice And Bright For You To Enjoy The Natural Light.

5 Minute Walk To Finch Subway, Shops, Restaurants, & More!

EXTRAS: All Electric Light Fixtures, All Window Coverings, All Existing Gourmet Appliances: Whirlpool Stainless Steel French Door Fridge, Samsung Stainless Steel Slide-In Flat Top Stove, Whirlpool Stainless Steel Built-In Microwave, Samsung Stainless Steel Built-In Dishwasher, Whirlpool White Washer and Dryer, Pot Lights, Wrought Iron Railings, Closet Organizers, Skylight, Hardwood Floors, Furnace, Air Conditioner, Hot Water Tank.

Maintenance Fee: \$480.19/mo. Taxes: \$3,352.35/2020