

# 28 Shalom Aleichem Court

[www.ThornhillBungalow.com](http://www.ThornhillBungalow.com)



ROYAL LEPAGE  
**CHAIRMAN'S CLUB**  
NATIONAL TOP 1%  
2012-2017

**Shawn Zigelstein**  
Sales Representative

TEAM **ZOLD**

Your Home • Your Life • Your Realtors

*Working For You!*

**905.731.2000**  
[www.teamzold.com](http://www.teamzold.com)

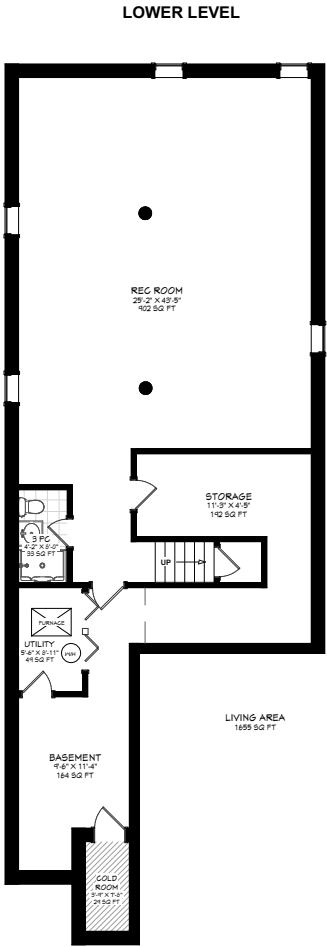
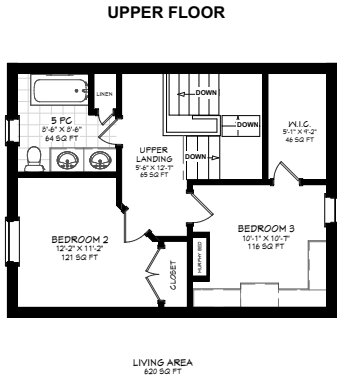
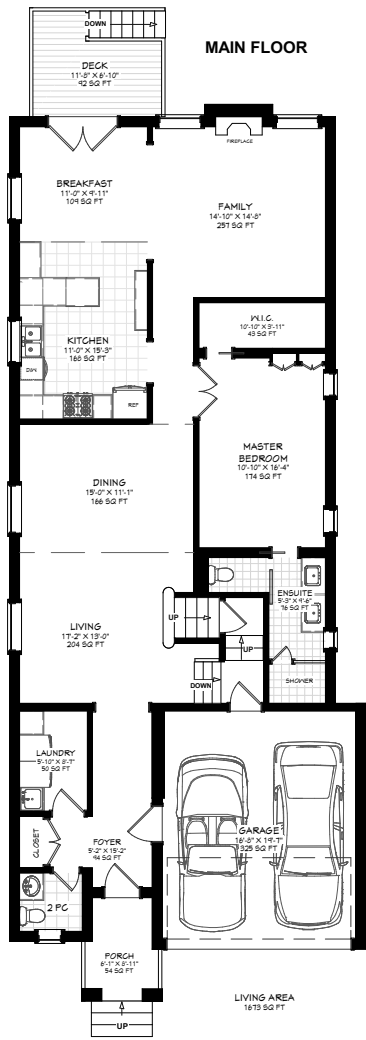
Your **Community**  
REALTY



BROKERAGE INDEPENDENTLY OWNED & OPERATED



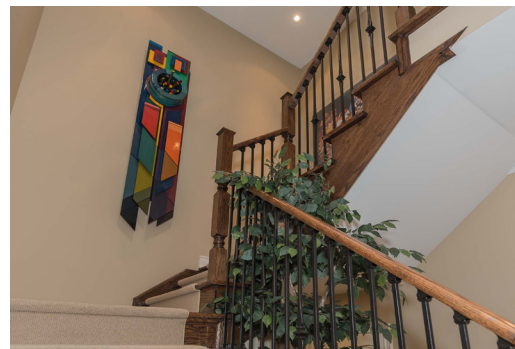
28 SHALOM ALEICHEM COURT



Prospective purchasers should satisfy themselves as to the accuracy of the information contained in this feature sheet. All measurements are approximate. The statements contained herein are based on sources which we believe are reliable, but for which we assume no responsibility.











## 28 Shalom Aleichem Ct

Thornhill, ON

### INTERACTIVE ADDRESS REPORT

#### SCHOOLS

With excellent public schools very close to this home, your kids will get a great education in the neighborhood.



#### Nearby Schools

##### Bakersfield PS

Grades PK to 8  
121 Mistysugar Trail  
0.58 KM

##### Stephen Lewis SS

Grades 9 to 12  
555 Autumn Hill Blvd  
0.84 KM

##### Thornhill Woods PS

Grades PK to 8  
341 Thornhill Woods Dr  
0.99 KM

##### Forest Run PS

Grades PK to 8  
200 Forest Run Blvd  
1.07 KM

##### Carrville Mills PS

Grades PK to 8  
270 Apple Blossom Dr  
1.35 KM

##### Westmount CI

Grades 9 to 12  
1000 New Westminster Dr  
2.28 KM

##### Langstaff SS

Grades 9 to 12  
106 Garden Ave  
3.17 KM

##### Vaughan SS

Grades 9 to 12  
1401 Clark Ave W  
3.52 KM

#### PARKS & REC.

This home is located in park heaven, with 4 parks and a long list of recreation facilities within a 20 minute walk from this address.



##### East Crossroads Park

35 Maple Sugar Lane  
0.61 KM



8 min

##### West Crossroads Park

130 Yellowwood Circle  
0.71 KM



10 min

##### Misty Sugar Park

75 Mistysugar Trail  
0.73 KM



10 min

#### FACILITIES WITHIN A 20 MINUTE WALK

1 Pool  
3 Sports Fields  
2 Basketball Courts  
1 Multi-Use Pad  
1 Fitness/Weight Room  
3 Playgrounds  
2 Tennis Courts  
1 Community Centre  
1 Craft Room  
1 Gym

#### TRANSIT

Public transit is at this home's doorstep for easy travel around the city. The nearest street transit stop is only a 3 minute walk away and the nearest rail transit stop is a 27 minute walk away.



##### Nearest Rail Transit Stop

Rutherford GO Station Rail



##### Nearest Street Level Transit Stop

Pleasant Ridge Av / Seabreeze Av



3 min

#### SAFETY

With safety facilities in the area, help is always close by. Facilities near this home include a fire station, a police station, and a hospital within 3.22 miles.



##### Mackenzie Richmond Hill Hospital

10 Trench St  
5.18 KM



##### Fire Station

111 Racco Pkwy  
1.52 KM



##### Police Station

2700 Rutherford Road  
3.63 KM

#### CONVENIENCE

This home is located near everyday amenities to make your daily errands easier.



##### Gym

2.9 KM



##### Grocery

1.6 KM



##### Gas Station

1.1 KM

Disclaimer: By accessing this information you have agreed to our terms of service, which are hereby incorporated by reference. This information may contain errors and omissions. You are not permitted to rely on the contents of this information and must take steps to independently verify its contents with the appropriate authorities (school boards, governments etc.). As a recipient of this information, you agree not to hold us, our licensors or the owners of the information liable for any damages, however caused.



### \*\*\*RARE STUNNING EXECUTIVE BUNGALOW IN THORNHILL WOODS\*\*\*

This Updated And Upgraded Home Has Nothing Left For You To Do Other Than Pack Your Bags! From The Moment You Drive Up To This Cul De Sac And See The Fantastic Curb Appeal That This Home Has To Offer You Will Feel At Home, Landscaping, Inground Pool, Custom Stonework Is Just The Beginning; Extras On The Inside Are To Much To Even Be Listed Here.

You Must See It In Person To Appreciate

Includes: Gourmet Appliances, Window Coverings, California Shutters, ELFS, Inground Pool and All Accessories, CVAC, Furnace, AC, Humidifier, EAC, Awning, GDO, Built In Cabinetry And Organizers, Murphy Bed, 200 AMP Service, Alarm System, Gas Line For BBQ And More.

Lot Size: 36.09 x 129.16 Feet Taxes: \$6,110.76 / 2017

Royal LePage Your Community Realty Brokerage does not warrant or guarantee the information in this feature sheet.