

WELCOME TO

# 28 Jondan Crescent

[www.28Jondan.com](http://www.28Jondan.com)



**Marek Kloda**  
Broker



TEAM **ZOLD**

Your Home • Your Life • Your Realtors

*Working For You!*

905.731.2000  
[www.teamzold.com](http://www.teamzold.com)



ROYAL LEPAGE  
**CHAIRMAN'S CLUB**  
NATIONAL  
TOP 1%  
LIFETIME MEMBER

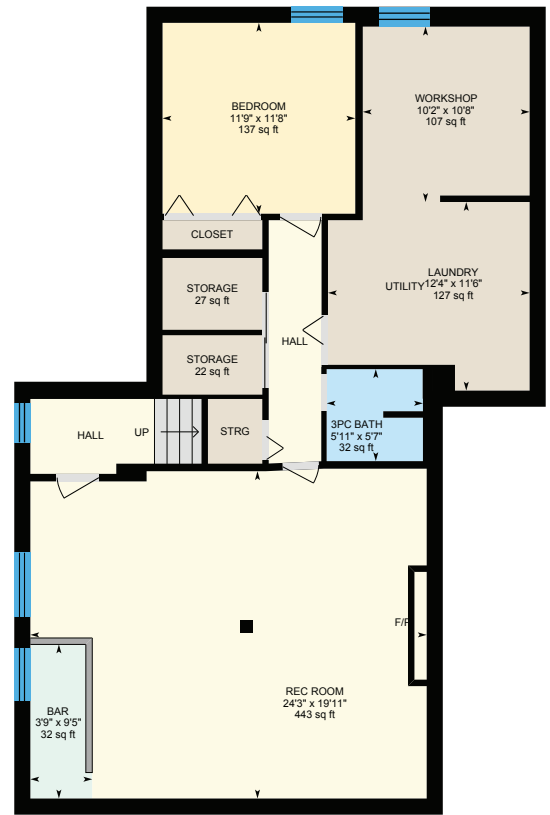


**Shawn Zigelstein**  
Broker

# 28 Jordan Crescent, Markham

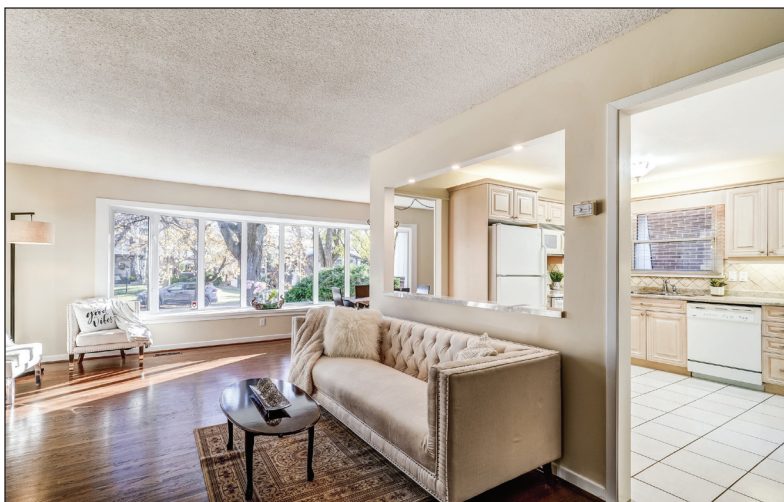


Main Floor



2nd Floor

Basement





## PUBLIC SCHOOLS

Your neighbourhood is part of a community of Public Schools offering Elementary, Middle, and High School programming.

### Stornoway Crescent PS

Designated Catchment School  
Grades PK to 3  
36 Stornoway Crescent

### Woodland PS

Designated Catchment School  
Grades 4 to 8  
120 Royal Orchard Blvd

### ÉS Norval-Morrisseau

Designated Catchment School  
Grades 7 to 12  
51 Wright St

### ÉÉ Paul-Demers

Designated Catchment School  
Grades PK to 6  
100 Ravel Rd

### Thornlea SS

Designated Catchment School  
Grades 9 to 12  
8075 Bayview Ave

### Other Local Schools

**Lester B. Pearson  
Elementary School**  
Grades K to 8  
7 Snowcrest Ave

## ALTERNATIVE & SPECIAL SCHOOLS

Nearby alternative and special education schools include:

### IAMSS Private School

Grades 1 to 8  
160 Dudley Ave

## CATHOLIC SCHOOLS

Your neighbourhood is part of a community of Catholic Schools offering Elementary, Middle, and High School programming.

### St Anthony Catholic ES

Grades PK to 8  
141 Kirk Dr

### ÉÉC Sainte-Marguerite- Bourgeois-Markham

Grades PK to 6  
111 John Button Blvd

### St Robert Catholic HS

Grades 9 to 12  
8101 Leslie St

### ÉSC Renaissance

Grades 7 to 12  
700 Bloomington Rd

## PRIVATE SCHOOLS

The private schools nearest to you are:



### TMS School - Bayview

Grades PK to 8  
8569 Bayview Ave

### Green High School

Grades 9 to 12  
300 John St

### Brown Academy

Grades 9 to 12  
650 Hwy 7 East

### Jingbao Bilingual Montessori School

Grades PK to 3  
265 16th Ave

## PARKS & REC.

This home is located in park heaven, with 4 parks and a long list of recreation facilities within a 20 minute walk from this address.



**Bayview Lane Park**  
Stornoway Cres



5 mins



**Bayview Reservoir**  
8075 Bayview Ave



7 mins



**Evergreen Park**  
Evergreen Cres



6 mins

**FACILITIES WITHIN A 20 MINUTE WALK**  
4 Playgrounds      6 Sports Fields  
1 Pool                      1 Track  
1 Rink                      1 Splash Pad  
4 Tennis Courts      1 Sports Court  
1 Basketball Court    1 Trail  
3 Ball Diamonds



## TRANSIT

Public transit is at this home's doorstep for easy travel around the city. The nearest street transit stop is only a 3 minute walk away and the nearest rail transit stop is a 16 minute walk away.

 **Nearest Rail Transit Stop**  
Langstaff GO



16 mins

 **Nearest Street Level Transit Stop**  
Langstaff Rd. E. @ Bayview Ave.



3 mins

## SAFETY

With safety facilities in the area, help is always close by. Facilities near this home include a fire station, a police station, and a hospital within 5.33km.

 **Mackenzie Richmond Hill Hospital**  
10 Trench St

 **Fire Station**  
7801 Bayview Ave

 **Police Station**  
171 Major Mackenzie Drive West



Great Opportunity in Royal Orchard Area to Move-In or Expand on Existing Home!!! A Spacious & Charming, Sunfilled Bungalow with Large Panoramic Window (2022) & Quartz Windowsill, Freshly Painted, Open Concept, Renovated Kitchen w/ Potlights, Backsplash & Newer Cabinets, All Hardwood Floors on Main, Renovated Main Bathroom with Quartz Counter (2022) and Jacuzzi Tub, Professionally Cleaned Carpet in Basement, Roof Re-Sealed 2021 & Driveway Sealed in Oct 2022, Private Garden w/Cedar Hedges & No Homes Behind! Freshly Painted Front & Garage Doors plus Deck & Fence. Walking Distance to Go & Transit on Bayview, Shopping Plaza, Schools, Community Centre, Hwys 407 & 404 and Much More!

### Extras:

All Existing Appliances: Kenmore Flat Top Electric White Stove (As Is), Kenmore Built-In Front Load White Dishwasher, Maytag White Fridge, Magic Chef White Microwave; Samsung Front Load Silver Washer, Samsung Front Load Silver Dryer, GE Top Load Washer (As Is), Kenmore Top Load Dryer (As Is), Jacuzzi, Window Coverings, All Electrical Light Fixtures, Gas Fireplace in the Basement (As Is), A/C, Furnace. Rental: Hot Water Tank.

Lot: 55 ft x 110.56 ft | Property Taxes: \$5,683.00/2022

Royal LePage Your Community Realty Brokerage does not warrant or guarantee the information in this feature sheet.