

WELCOME TO

— 500 Doris Ave. #2824 —

TORONTO



Sarah Norris
Sales Representative

TEAM **ZOLD**

Your Home • Your Life • Your Realtors

Working For You!

905.731.2000
www.teamzold.com

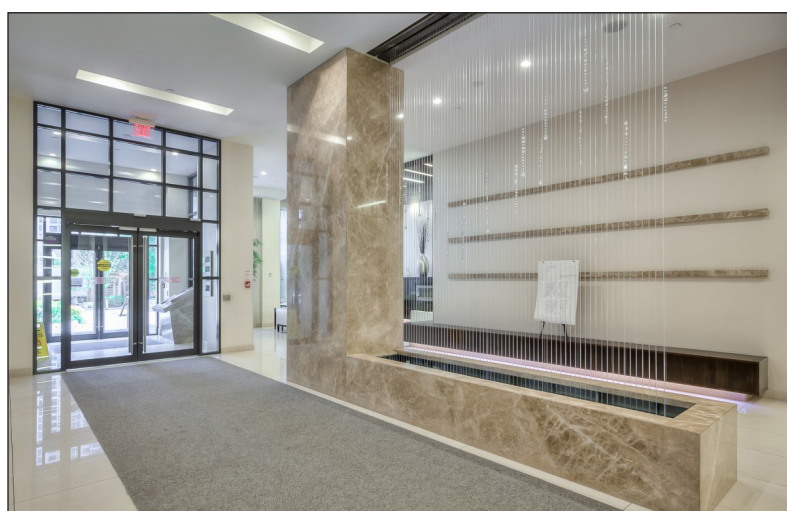
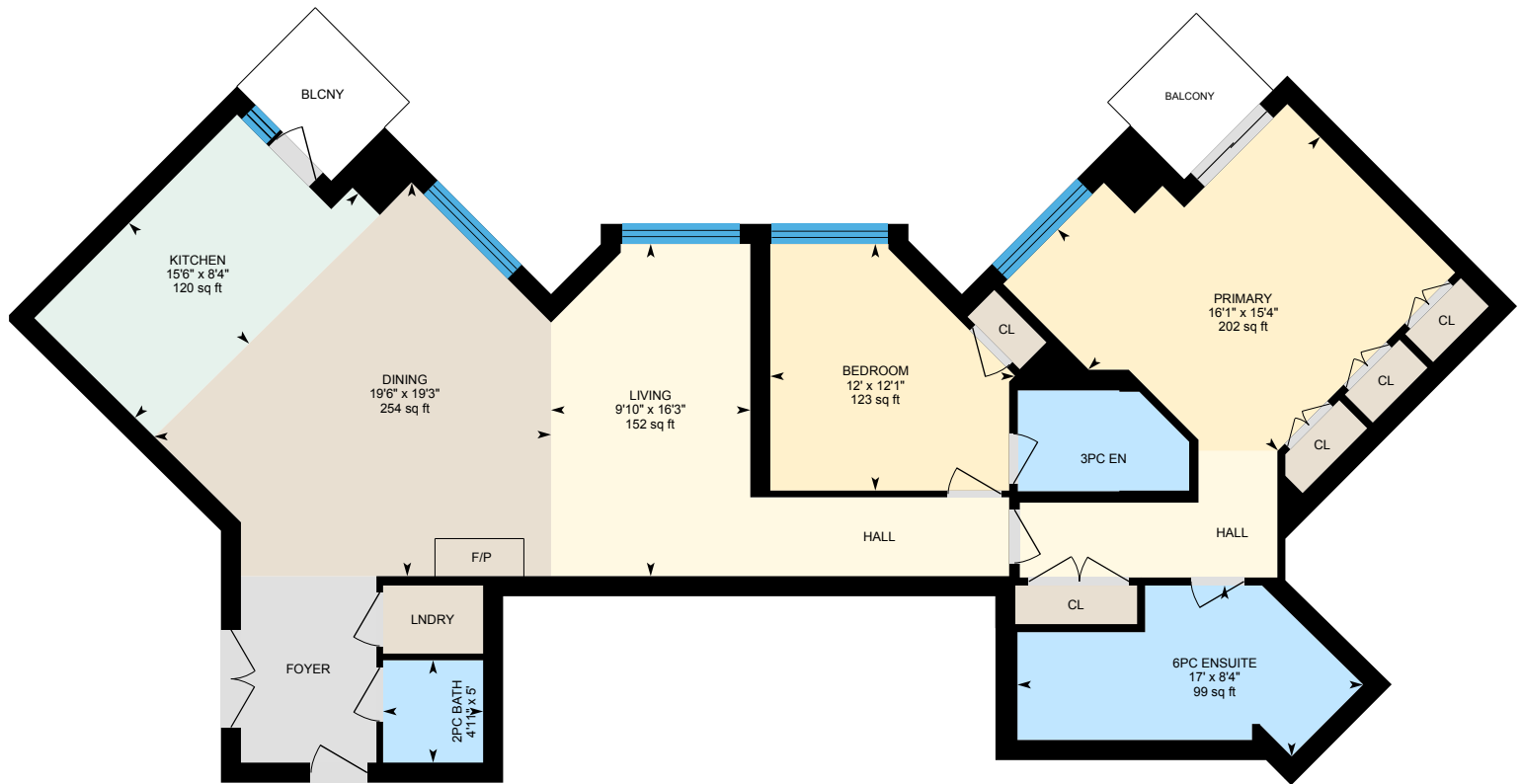


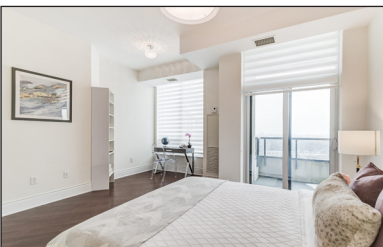
ROYAL LEPAGE
CHAIRMAN'S CLUB
NATIONAL
TOP 1%
LIFETIME MEMBER

Shawn Zigelstein
Broker



500 Doris Avenue #2824, Toronto





PUBLIC SCHOOLS

Your neighbourhood is part of a community of Public Schools offering Elementary, Middle, and High School programming.

Georges Vanier Secondary School

Designated Catchment School
Grades 9 to 12
3000 Don Mills Rd

Lillian Public School

Designated Catchment School
Grades PK to 5
1059 Lillian St

É Éléon Paul-Demers

Designated Catchment School
Grades PK to 6
100 Ravel Rd

Cummer Valley Middle School

Designated Catchment School
Grades 6 to 8
70 Maxome Ave

ÉS Étienne-Brûlé

Designated Catchment School
Grades 7 to 12
300 Banbury Rd

Other Local Schools

Claude Watson School for the Arts

Grades 4 to 8
130 Doris Ave

ALTERNATIVE & SPECIAL SCHOOLS

Nearby alternative and special education schools include:

Avondale Secondary Alternative School

Grades 9 to 12
24 Silverview Drive

Drewry Secondary School

Grades 9 to 12
70 Drewry Ave



CATHOLIC SCHOOLS

Your neighbourhood is part of a community of Catholic Schools offering Elementary, Middle, and High School programming.

St. Gabriel Catholic School

Grades PK to 8 (Assigned)
396 Spring Garden Ave

ÉEC Sainte-Madeleine

Grades PK to 6 (Assigned)
1 Ness Dr

ÉSC Monseigneur-de-Charbonnel

Grades 7 to 12 (Assigned)
110 Drewry Ave

St. Cyril Catholic School

Grades PK to 8
18 Kempford Blvd

PRIVATE SCHOOLS

The private schools nearest to you are:



Apollo High School

Grades 9 to 12
5467 Yonge St

St. George Academy

Grades 9 to 12
77 Finch Avenue West

McDonald International Academy - North York Campus

Grades 9 to 12
5 Park Home Ave

Unionville Academy

Grades 9 to 12
24 Drewry Ave

PARKS & REC.

This home is located in park heaven, with 4 parks and 6 recreation facilities within a 20 minute walk from this address.



Northtown Park

435 Doris Ave
1 min

Kenneth Park

417 Kenneth Ave
3 min

Kempford Parkette

15 Santa Barbara Rd
4 min

FACILITIES WITHIN A 20 MINUTE WALK

4 Playgrounds 1 Trail
1 Picnic Facilities

TRANSIT

Public transit is at this home's doorstep for easy travel around the city. The nearest street transit stop is only a minute walk away and the nearest rail transit stop is a 7 minute walk away.

Nearest Rail Transit Stop

Finch Station



7 min

Nearest Street Level Transit Stop

Yonge St At Byng Ave



1 min

SAFETY

With safety facilities in the area, help is always close by. Facilities near this home include a fire station, a police station, and a hospital within 4.03km.

North York General Hospital

4001 Leslie St

Fire Station

12 Canterbury Pl

Police Station

30 Ellerslie Ave

CONVENIENCE

This home is located near everyday amenities to make your daily errands easier.

Coffee



Gym



Grocery



Gas Station



HoodQ

Disclaimer: These materials have been prepared for shawn@teamzold.com and are not intended to solicit buyers or sellers currently under contract with a brokerage. By accessing this information you have agreed to our terms of service, which are hereby incorporated by reference. This information may contain errors and omissions. You are not permitted to rely on the contents of this information and must take steps to independently verify its contents with the appropriate authorities (school boards, governments etc.). As a recipient of this information, you agree not to hold us, our licensors or the owners of the information liable for any damages, however caused.

LUXURY SUB-PENTHOUSE TRIDEL 1,576 SQ. FT. SUITE AT YONGE & FINCH WITH 2 BALCONIES

With 10 Ft Ceilings, This 2xBedroom, and 3xWashroom Condo Also Boasts 2 Balconies with SE Panoramic Views.

This Amazing Open Concept Home has a Modern Kitchen w/Granite Counters, Center Island, and Maple Cabinets. It Is Incredibly Bright With Windows Galore, Hardwood Floors, Pot Lights, Custom Closets in the Primary Bedroom, and a Living Room Fireplace. Very Private - Only 4 Units On This Sub-Penthouse Floor. Close To All Amenities, Including Subway, Excellent Schools, Parks, Shopping, Restaurants, Theatre, Hwy401, and more.

Extras: Includes All KitchenAid Appliances: Built-In Oven, Built-In Microwave, Convection Cooktop, Rangehood/Fan, Refrigerator, Built-In Dishwasher; White Whirlpool Washer & Dryer; All Window Coverings/Blinds; All Electrical Light Fixtures, Murphy Bed/ Cabinets in 2nd Bedroom (Excl. Mattress), and Living Room Fireplace.

*** 2-BEDROOM, BOTH WITH EN-SUITE WASHROOMS *** 2 PARKING SPOTS & LOCKER ***

Amenities Include. Gym, Indoor Pool, Media Rm, Party Room, Guest Suites, 2 Pkg Spots & Locker.

Maintenance Fees: \$1,035.03/month | Taxes: \$4,924.78/2021

Royal LePage Your Community Realty Brokerage does not warrant or guarantee the information in this feature sheet.

