

278 Billings Crescent

www.278Billings.com



YOUR
Community
REALTY
ROYAL LEPAGE
BROKERAGE INDEPENDENTLY OWNED & OPERATED

Al Direzze
Broker

TEAM **ZOLD**

Your Home • Your Life • Your Realtors

Working For You!

905.731.2000
www.teamzold.com

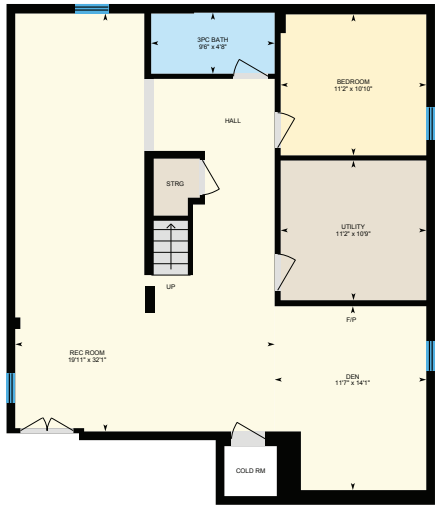
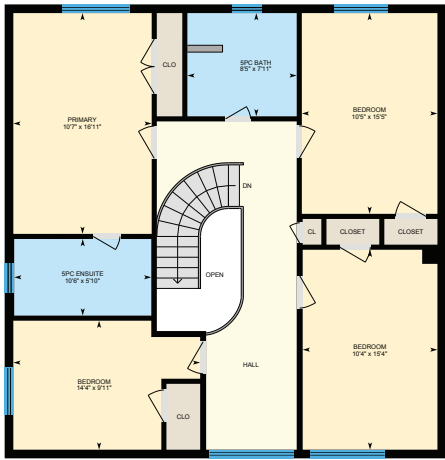
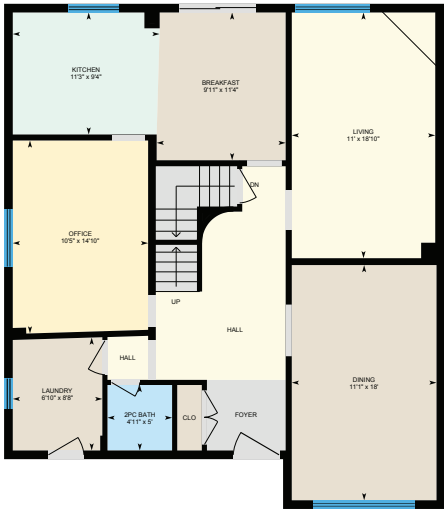


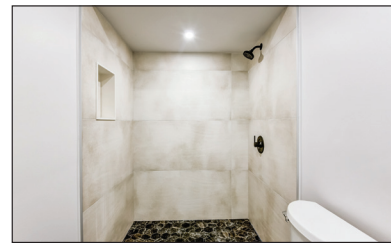
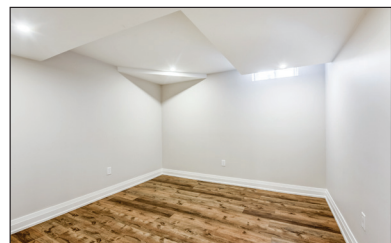
ROYAL LEPAGE
CHAIRMAN'S CLUB
NATIONAL TOP 1%
2012-2020

Shawn Zigelstein
Broker



278 Billings Crescent





PUBLIC SCHOOLS

Your neighbourhood is part of a community of Public Schools offering Elementary, Middle, and High School programming.

Denne PS

Designated Catchment School
Grades PK to 8
330 Burford St

Dr John M Denison SS

Designated Catchment School
Grades 9 to 12
135 Bristol Rd

Poplar Bank PS

Designated Catchment School
Grades PK to 8
400 Woodspring Ave

ÉS Norval-Morrisseau

Designated Catchment School
Grades 7 to 12
51 Wright St

ALTERNATIVE & SPECIAL SCHOOLS

Nearby alternative and special education schools include:

Above and Beyond Learning Experience

Grades 1 to 12
1220 Stellar Dr

Above and Beyond Learning Experience

Grades 1 to 12
1220 Stellar Dr



CATHOLIC SCHOOLS

Your neighbourhood is part of a community of Catholic Schools offering Elementary, Middle, and High School programming.

Canadian Martyrs Catholic ES

Grades PK to 8 (Assigned)
170 London Rd

ÉEC Jean-Béliveau

Grades PK to 6 (Assigned)
19300 2nd Concession Rd

Sacred Heart Catholic HS

Grades 9 to 12 (Assigned)
908 Lemar Rd

ÉSC Renaissance

Grades 7 to 12 (Assigned)
700 Bloomington Rd

PRIVATE SCHOOLS

The private schools nearest to you are:



Pickering College

Grades PK to 12
16945 Bayview Ave

Newmarket & District Christian Academy

Grades K to 8
221 Carlson Dr

Innova Academy

Grades PK to 8
1000 Gorham St

La Maison Montessori House

Grades PK to 8
1205 Stellar Dr

PARKS & REC.

This home is located in park heaven, with 4 parks and a long list of recreation facilities within a 20 minute walk from this address.



Denne Bush

400 Bristol Rd

6 min

Proctor Park

116 London Rd

11 min

Marilyn Powell Park

449 London Rd

8 min

FACILITIES WITHIN A 20 MINUTE WALK

3 Playgrounds
1 Basketball Court
4 Ball Diamonds
3 Picnic Facilities
4 Sports Fields
1 Splash Pad
3 Trails
2 Multi-Use Pads

TRANSIT

Public transit is at this home's doorstep for easy travel around the city. The nearest street transit stop is only a minute walk away and the nearest rail transit stop is a 19 minute walk away.

Nearest Rail Transit Stop

Newmarket GO

19 min

Nearest Street Level Transit Stop

Bristol Rd / Billings Cres

1 min

SAFETY

With safety facilities in the area, help is always close by. Facilities near this home include a hospital, a police station, and a fire station within 3.13km.

Southlake Regional Health Centre

596 Davis Dr

Fire Station

125 McCaffrey Rd

Police Station

240 Prospect Street

CONVENIENCE

This home is located near everyday amenities to make your daily errands easier.

Coffee

Grocery

Gym

Gas Station

HoodQ

Disclaimer: These materials have been prepared for shawn@teamzold.com and are not intended to solicit buyers or sellers currently under contract with a brokerage. By accessing this information you have agreed to our terms of service, which are hereby incorporated by reference. This information may contain errors and omissions. You are not permitted to rely on the contents of this information and must take steps to independently verify its contents with the appropriate authorities (school boards, governments etc.). As a recipient of this information, you agree not to hold us, our licensors or the owners of the information liable for any damages, however caused.



WELCOME TO 278 BILLINGS!

Tastefully Renovated Home With Finished Basement, Double Garage, Double Drive (No Side Walk), Fenced Yard On A Quiet Street. Reno's Include: Kitchen, Laundry (18), Bathrooms ('20), Hardwood Flooring, Baseboard And Trim, Windows ('18) Sliding Door (18), Garage Door, Eavestrough, Furnace, Patio and Walkway, New Drive, Ceiling Fans. Upgraded Electrical, Pot Lights, C-AIR And Roof (2010), Finished Basement, 3 Pcs Bath, Bedroom, Den, Rec Room With Rough-In Kit, Cold Cellar And More. Close To Shops, Schools, Restaurants, Southlake Hospital, Transit, HWY 404 And Much More. A Must See Home!

Includes: All Electric Light Fixtures, All Window Coverings, Stainless Steel Appliances (Fridge, Stove, Built-In Dishwasher, Exhaust Hood), Washer, Dryer, Garage Door Openers and Remotes.

Lot: 49.30 ft x 114.55 ft (Irregular as per survey) Taxes: \$5,087.00/2020

Royal LePage Your Community Realty Brokerage does not warrant or guarantee the information in this feature sheet.