

WELCOME TO

— 512-277 South Park Road —



ROYAL LEPAGE
CHAIRMAN'S CLUB
NATIONAL TOP 1%
LIFETIME MEMBER

Shawn Zigelstein
Broker

TEAM **ZOLD**

Your Home • Your Life • Your Realtors

Working For You!

www.teamzold.com

YOUR **Community**
REALTY™

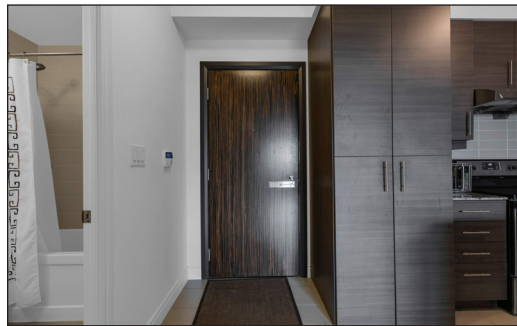
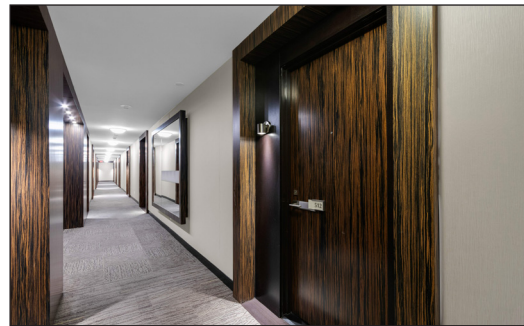
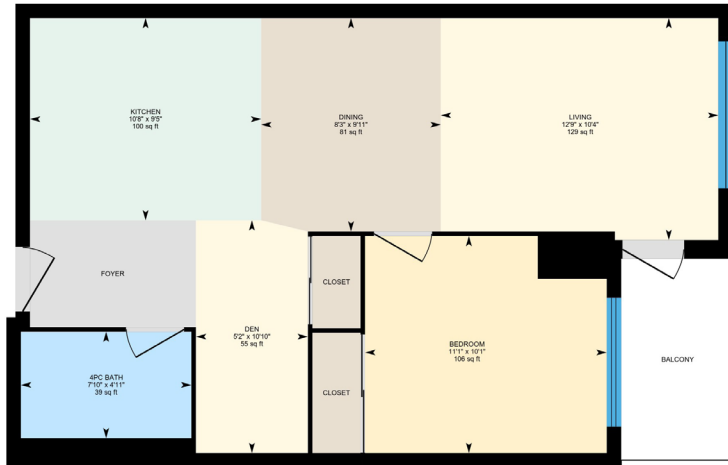
ROYAL LEPAGE

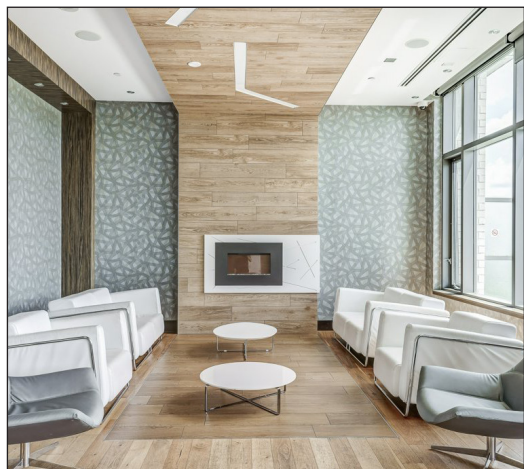
BROKERAGE INDEPENDENTLY OWNED & OPERATED

905.731.2000

512-277 South Park Rd, Markham

Main Floor Exterior Area 663.47 sq ft
Interior Area 592.03 sq ft





512-277 South Park Rd, Markham

PUBLIC SCHOOLS

Your neighbourhood is part of a community of Public Schools offering Elementary, Middle, and High School programming.

ÉS Norval-Morrisseau

Designated Catchment School
Grades 7 to 12
51 Wright St

Thornlea SS

Designated Catchment School
Grades 9 to 12
8075 Bayview Ave

Académie de la Moraine

Designated Catchment School
Grades PK to 6
115 George St

Doncrest PS

Designated Catchment School
Grades PK to 8
124 Blackmore Ave

Adrienne Clarkson PS

Designated Catchment School
Grades 1 to 8
68 Queens College Dr

Other Local Schools

**Lester B. Pearson
Elementary School**
Grades K to 8
7 Snowcrest Ave

ALTERNATIVE & SPECIAL SCHOOLS

Nearby alternative and special education schools include:

Kayla's Children Centre

Grades PK to 8, Ungraded
36 Atkinson Ave

IAMSS Private School

Grades 1 to 8
160 Dudley Ave

CATHOLIC SCHOOLS

Your neighbourhood is part of a community of Catholic Schools offering Elementary, Middle, and High School programming.

ÉSC Renaissance

Grades 7 to 12
700 Bloomington Rd

St Robert Catholic HS

Grades 9 to 12
8101 Leslie St

ÉÉC Sainte-Marguerite- Bourgeoys-Markham

Grades PK to 6
111 John Button Blvd

St Rene Goupil-St Luke Catholic ES

Grades PK to 8
135 Green Ln

PRIVATE SCHOOLS

The private schools nearest to you are:

Wishing Well Montessori Schools

Grades PK to 8
455 Cochrane Dr

Green High School

Grades 9 to 12
300 John St

TMS School - Bayview

Grades PK to 8
8569 Bayview Ave

Brown Academy

Grades 9 to 12
650 Hwy 7 East

PARKS & REC.

This home is located in park heaven, with 4 parks and a long list of recreation facilities within a 20 minute walk from this address.



Leitchcroft Park

South Park Rd
4 mins



Dollar Hamlet Park

Suncrest Blvd
5 mins



Saddlecreek Park

South Park Rd
4 mins



FACILITIES WITHIN A 20 MINUTE WALK

3 Playgrounds
2 Tennis Courts
1 Basketball Court
2 Sports Fields
1 Splash Pad
1 Skateboard Park
1 Trail

TRANSIT

Public transit is at this home's doorstep for easy travel around the city. The nearest street transit stop is only a 2 minute walk away and the nearest rail transit stop is a 35 minute walk away.



Nearest Rail Transit Stop
Langstaff GO



Nearest Street Level Transit Stop
South Park Rd / Park Common Blvd



2 mins

SAFETY

With safety facilities in the area, help is always close by. Facilities near this home include a fire station, a police station, and a hospital within 6.04km.



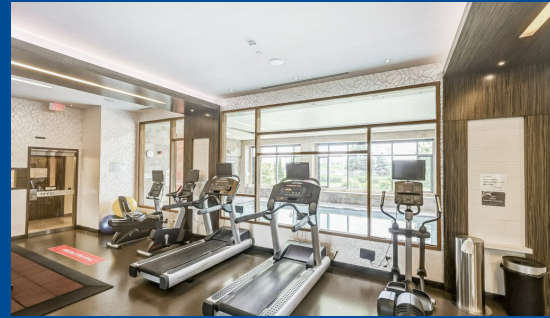
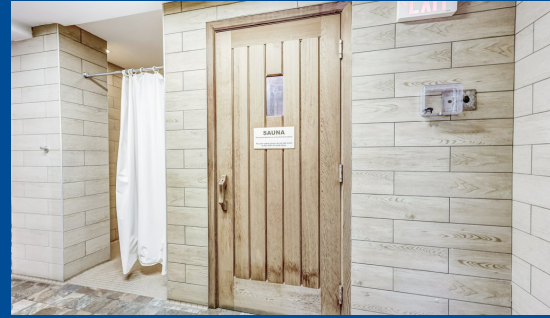
Mackenzie Richmond Hill Hospital
10 Trench St



Fire Station
7801 Bayview Ave



Police Station
171 Major Mackenzie Drive West



Welcome To The Vibrant Community Of Eden Park II In Markham

This Meticulously Designed 1+1 Bedroom Condo With Parking and Locker Offers A Harmonious Blend Of Comfort, Style, And Convenience. As You Step Inside, You'll Be Greeted By An Open-Concept Living Space That Seamlessly Integrates The Kitchen, Dining Area, And Living Room. The Flow Of Natural Light Creates An Inviting Ambiance, Perfect For Both Relaxation And Entertaining Guests. Whether You're Hosting A Dinner Party Or Enjoying A Cozy Movie Night, This Condo Provides Ample Room For Entertaining. The Spacious Living Area Allows For Versatile Furniture Arrangements, And The Kitchen Boasts Modern Appliances And Plenty Of Counter Space. Imagine Waking Up To Sun-Kissed Mornings And Sipping Your Coffee On The Balcony While Taking In The Panoramic Views. The South-Facing Exposure Ensures Abundant Natural Light Throughout The Day, Creating A Warm And Cheerful Atmosphere.

Step Outside Onto Your Private Balcony And Enjoy A Breath Of Fresh Air. Its The Perfect Spot To Unwind, Read A Book, Or Simply Soak In The Views Of The Surrounding Greenery. Eden Park II Offers An Array Of Amenities That Enhance Your Lifestyle: Fitness Center: Stay Active Without Leaving The Building. Indoor Pool: Take A Refreshing Swim Year-Round. Party Room: Host Gatherings And Celebrations With Ease. Concierge Service And Security: Enjoy The Convenience Of Professional Assistance 24/7. Visitor Parking: Your Guests Will Appreciate The Hassle-Free Underground Parking.

Nestled In The Heart Of Markham, This Condo Is Close To Everything You Need. Explore Nearby Parks, Dine At Local Restaurants, And Commuters Will Appreciate Easy Access To Major Highways And Public Transit. From Hardwood Floors To Sleek Cabinetry, Every Detail Has Been Carefully Chosen To Elevate Your Living Experience. In Summary, This 1+1 Condo At Eden Park II Offers A Harmonious Blend Of Comfort, Convenience, And Style. Don't Miss Out On The Opportunity To Make It Your Own!

All Existing Stainless Steel Appliances: Whirlpool Stove, Sakura Built-in Hoodfan, Whirlpool Built-In Dishwasher, Frigidaire Fridge, Whirlpool Stackable White Washer and Dryer, All Window Coverings, All Electrical Light Fixtures, TV Brackets, Shelves in Den, Parking, Locker.

Maintenance Fees: \$518.05 / Month | Property Taxes: \$2,156.86 / 2025

Royal LePage Your Community Realty Brokerage does not warrant or guarantee the information in this feature sheet.