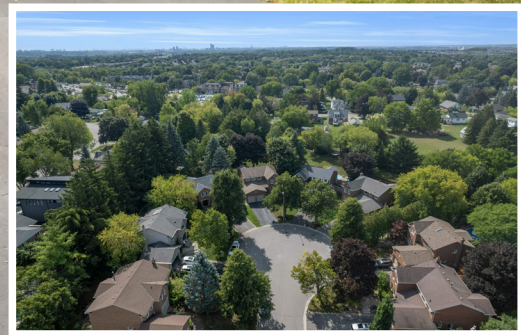


WELCOME TO

25 Hare Court

www.25Hare.com



Sarah Norris
Sales Representative



TEAM **ZOLD**

Your Home • Your Life • Your Realtors

Working For You!

905.731.2000
www.teamzold.com

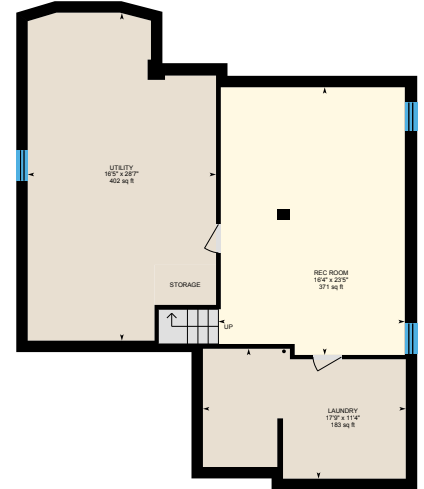


ROYAL LEPAGE
CHAIRMAN'S CLUB
NATIONAL
TOP 1%
LIFETIME MEMBER

Shawn Zigelstein
Broker



25 Hare Court, Markham



1st Floor
Exterior Area 1238.49 sq ft

0 5 10
ft



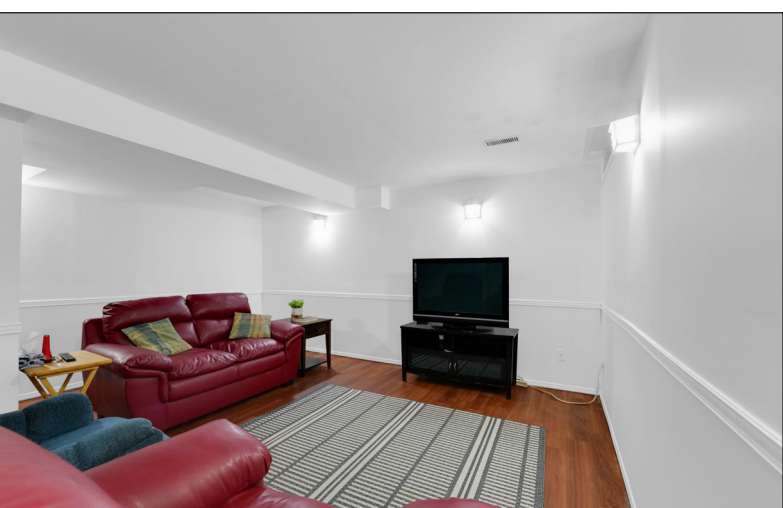
2nd Floor
Exterior Area 1092.54 sq ft



Basement (Below Grade)
Exterior Area 1160.87 sq ft

PREPARED: 2025/09/03





SCHOOLS

With good assigned and local public schools very close to this home, your kids can thrive in the neighbourhood.



Edward T. Crowle PS
Designated Catchment School
Grades PK to 8
15 Larkin Ave

Markham DHS
Designated Catchment School
Grades 9 to 12
89 Church St

ÉS Norval-Morriseau
Designated Catchment School
Grades 7 to 12
51 Wright St

Académie de la Moraine
Designated Catchment School
Grades PK to 6
115 George St

Other Local Schools
Bill Crothers SS
Grades 9 to 12
44 Main St Unionville

PUBLIC SCHOOLS

Your neighbourhood is part of a community of Public Schools offering Elementary, Middle, and High School programming.

ÉS Norval-Morriseau
Designated Catchment School
Grades 7 to 12
51 Wright St

Markham DHS
Designated Catchment School
Grades 9 to 12
89 Church St

Académie de la Moraine
Designated Catchment School
Grades PK to 6
115 George St

Edward T. Crowle PS
Designated Catchment School
Grades PK to 8
15 Larkin Ave

Franklin Street Public School
French Immersion
Grades PK to 8
21 Franklin St

ALTERNATIVE & SPECIAL SCHOOLS

Nearby alternative and special education schools include:

Agora Prep Academy
Grades 1 to 6
8333 Kennedy Rd

Agora Prep Academy
Grades 1 to 6
8333 Kennedy Rd



CATHOLIC SCHOOLS

Your neighbourhood is part of a community of Catholic Schools offering Elementary, Middle, and High School programming.

St Brother André Catholic HS
Grades 9 to 12
6160 16th Ave

École catholique Pape-François
Grades PK to 12
276 Sunset Blvd

St Edward Catholic ES
Grades 1 to 8
33 Cairns Dr

St Kateri Tekakwitha Catholic ES
Grades PK to 8
230 Fincham Ave

PRIVATE SCHOOLS

The private schools nearest to you are:



Yip's Collegiate School
Grades 9 to 12
7700 Brimley Rd

Unionville Montessori School
Grades PK to 6
4486 16th Ave

Wesley Christian Academy
Grades PK to 8
22 Heritage Rd

Cambridge Academy
Grades 9 to 12
5873 ON-7

TRANSIT

Public transit is at this home's doorstep for easy travel around the city. The nearest street transit stop is only a 3 minute walk away and the nearest rail transit stop is a 5 minute walk away.

Nearest Rail Transit Stop
Markham GO

5 mins

Nearest Street Level Transit Stop
Markham Rd At Springdale St

3 mins

SAFETY

With safety facilities in the area, help is always close by. Facilities near this home include a fire station, a hospital, and a police station within 2.4km.

Markham Stouffville Hospital
381 Church St

Fire Station
209 Main St N

Police Station
8700 McCowan Road

HoodQ

Disclaimer: These materials have been prepared for shawn@teamzold.com and are not intended to solicit buyers or sellers currently under contract with a brokerage. By accessing this information you have agreed to our terms of service, which are hereby incorporated by reference. This information may contain errors and omissions. You are not permitted to rely on the contents of this information and must take steps to independently verify its contents with the appropriate authorities (school boards, governments etc.). As a recipient of this information, you agree not to hold us, our licensors or the owners of the information liable for any damages, however caused.



Welcome To One Of The Largest Residential Properties In All Of Markham Village!

Imagine the possibilities whether you envision your own private tennis court, a custom play park for the kids, or both, the spacious backyard oasis, can accommodate your family's dreams. This exquisite four-bedroom home is perfectly located on one of the most sought-after streets in Markham Village, nestled at the top of a tranquil cul-de-sac. Lovingly cared for by a single family since its construction, the home reflects years of attentive maintenance and pride. Inside, bamboo flooring graces the main level, which features a formal living room and a family room anchored by a cozy wood-burning fireplace. Both the family room and kitchen have walkouts to the backyard deck, seamlessly connecting indoor and outdoor living. The separate dining room offers a space for formal gatherings, while the kitchen provides abundant cabinet storage, a movable island, and an eat-in area with new patio doors opening onto the deck, perfect for enjoying morning coffee in a peaceful setting, listening to the birds sing. The property spans well over half an acre (and over 300 ft deep in areas), offering a true sanctuary of comfort, relaxation, and nature. Whether you're hosting summer gatherings, swimming morning laps, or floating beneath the stars, the beautifully landscaped outdoor areas invite seamless entertaining and personal retreat.

25 Hare Crt is a true gem in a prime location, offering access to all the conveniences of Markham Village. Residents can walk to Markham Main Street to enjoy lively festivals, diverse restaurants, and unique shopping, or you can walk to Markham GO for a quick escape to the city. The home is also near parks, trails, excellent schools, the library, Centennial Community Ctr, MS Hospital, Markville Mall, Hwy 407, and so much more. Every convenience blends into this peaceful and extraordinary family setting. What more could you ask for in your new home.

All existing appliances: White Inglis Refrigerator, White Kenmore Dishwasher, S/S LG Rangehood/Fan, S/S Whirlpool Stove; White Whirlpool Washer & Dryer (Top Load); Basement Magic Chef Refrigerator & Kenmore Freezer; All Electrical Light Fixtures; All Window Coverings/Blinds; Movable Island in Kitchen; Furnace (2017), Air Conditioner (As Is); Central Vacuum with attachments (attachments 'as is'); All pool equipment (as is), including newer pump, pool cover.

Taxes: \$7,989.15/2025 Lot Size: Irregular shape - 0.619 ac

Royal LePage Your Community Realty Brokerage does not warrant or guarantee the information in this feature sheet.