

WELCOME TO

25 Davis Trail

www.25Davis.com



ROYAL LEPAGE
CHAIRMAN'S CLUB
NATIONAL TOP 1%
LIFETIME MEMBER

Shawn Zigelstein
Broker

TEAM **ZOLD**

Your Home • Your Life • Your Realtors

Working For You!

www.teamzold.com

YOUR **Community**
REALTY™

ROYAL LEPAGE

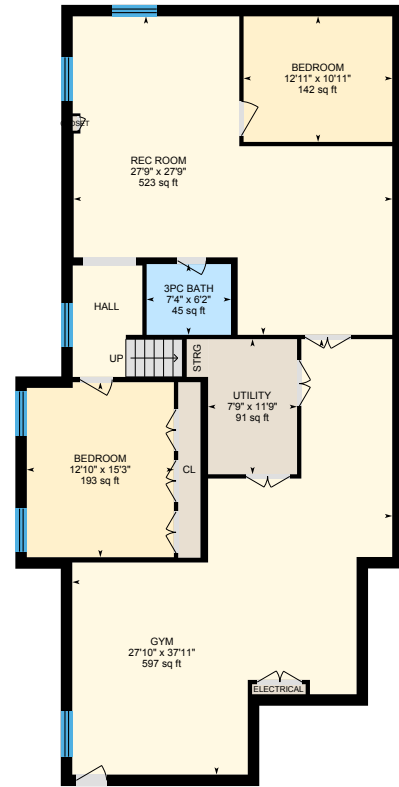
BROKERAGE INDEPENDENTLY OWNED & OPERATED

905.731.2000

25 Davis Trail, Thornton



Main Floor



Basement (Below Grade)





PUBLIC SCHOOLS

Your neighbourhood is part of a community of Public Schools offering Elementary, Middle, and High School programming.

Cookstown PS

Designated Catchment School
Grades PK to 8
5088 Simcoe County Rd 27

ÉS Roméo Dallaire

Designated Catchment School
Grades 7 to 12
736 Essa Rd

É Élé La Source

Designated Catchment School
Grades PK to 6
70 Madeline Dr

Bear Creek SS

Designated Catchment School
Grades 9 to 12
100 Red Oak Dr

CATHOLIC SCHOOLS

Your neighbourhood is part of a community of Catholic Schools offering Elementary, Middle, and High School programming.

St. Nicholas Catholic School

Grades PK to 8
100 Loughheed Rd

ÉÉC Marguerite-Bourgeois-Borden

Grades PK to 8
117 Waterloo Rd E

St. Joan of Arc High School

Grades 9 to 12
460 Mapleton Ave

ÉSC Nouvelle-Alliance

Grades 7 to 12
249 Anne St N

PRIVATE SCHOOLS

The private schools nearest to you are:



Timothy Christian School

Grades K to 8
750 Essa Rd

Convoy International Secondary Academy - Essa Campus

Grades 9 to 12
8058 8th Line

Heritage Christian Academy

Grades K to 12
79 Ardagh Rd

PARKS & REC.

This home is located in park heaven, with 4 parks and a long list of recreation facilities within a 20 minute walk from this address.



Thornton Creek Park

93 Davis Trail



4 mins

Earl Cunningham Park

Henry St



6 mins

Kevin Crescent Park

Kevin Crescent



5 mins

FACILITIES WITHIN A 20 MINUTE WALK

4 Playgrounds
1 Rink
1 Tennis Court
1 Ball Diamond
1 Sports Field
1 Community Centre
1 Splash Pad
1 Trail

TRANSIT

For convenient travel around the city, public transit is accessible from this home.

 **Nearest Street Level Transit Stop**
Loughheed Road

SAFETY

With safety facilities in the area, help is always close by. Facilities near this home include a fire station, a police station, and a hospital within 17.19km.

 **Royal Victoria Regional Health Centre**
201 Georgian Dr

 **Fire Station**
34 Simcoe County Rd 21

 **Police Station**
2137 Innisfil Beach Rd

HoodQ

Disclaimer: These materials have been prepared for shawn@teamzold.com and are not intended to solicit buyers or sellers currently under contract with a brokerage. By accessing this information you have agreed to our terms of service, which are hereby incorporated by reference. This information may contain errors and omissions. You are not permitted to rely on the contents of this information and must take steps to independently verify its contents with the appropriate authorities (school boards, governments etc.). As a recipient of this information, you agree not to hold us, our licensors or the owners of the information liable for any damages, howsoever caused.



WELCOME HOME TO THIS AMAZING RANCH BUNGALOW IN THE COMMUNITY OF THORNTON CREEK

If You Are Looking For Something That Has Tons Of Space Both Inside And Out, Then This Is Home For You. Sitting On Almost 1 Acre, This Home Is An Entertainers Dream With An Open Concept Layout, Professionally Finished Basement With A Separate Entrance And Two Bedrooms Plus Tons Of Living Space, Inground Swimming Pool With Full Deck And Gazebo To Spend Those Upcoming Summer Days. Surrounded By Custom Builds, This Street And Area Is Not Your Typical Subdivision, The Space Between The Homes Gives You The Utmost Privacy, Yet Still Close Enough To Not Feel Secluded. The Area Has Some Fantastic Features Including Walking Paths That Go For Miles, Several Unreal Ice Cream Stores...Who Doesn't Love Ice Cream? 20 Minutes To The Lake And Beach, Minutes To HWY 400 And So Many Other Amazing Amenities. As Soon As You Drive Up And See The Massive Porch And Custom Stonework You Will Fall In Love.

Extras: All Existing Appliances: LG White Fridge, GE Café Stainless Steel Slide-In Flat Top Stove, Allure White Built-In Hood Fan, Bosch Stainless Steel Built-In Dishwasher; LG Stainless Steel Washer & LG White Dryer, Gas Fireplace, All Electrical Light Fixtures, All Window Coverings, Closet Organizers, Jacuzzi Tub, A/C, Humidifier, Furnace, Air Cleaner, Water Softener, Water Filter, Hot Water Tank, Sump Pump, Garage Door Opener and Remote, Alarm System, Gazebo, Pool and All Related Equipment.

Excluded: Shelves in The Basement Bedroom, Inglis White Fridge In The Basement, Carpeted Wall In The Basement With Dart Board.

Irregular Lot: 240.48 ft x 199.87 ft x 162.89 ft x 201.62 ft. | Taxes: \$5,192.09/2023

Royal LePage Your Community Realty Brokerage does not warrant or guarantee the information in this feature sheet.