

# 257 Tom Taylor Crescent

[www.257tomtaylor.com](http://www.257tomtaylor.com)



**Your Community™**  
**ROYAL LEPAGE**  
BROKERAGE INDEPENDENTLY OWNED & OPERATED

**Marek Kloda**  
Broker

**TEAM ZOLD**

Your Home • Your Life • Your Realtors

*Working For You!*

**905.731.2000**  
[www.teamzold.com](http://www.teamzold.com)



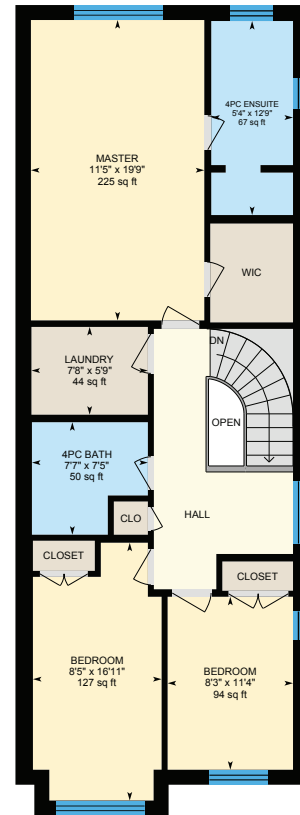
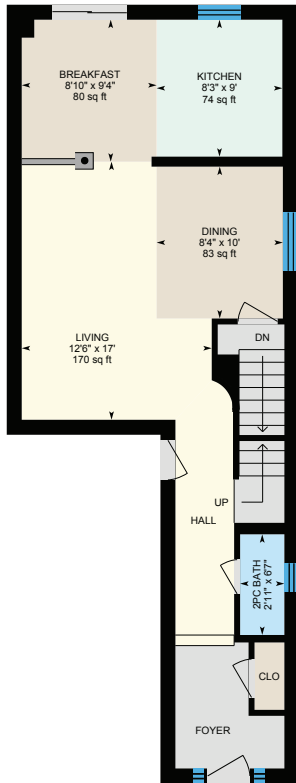
**ROYAL LEPAGE**  
**CHAIRMAN'S CLUB**  
NATIONAL TOP 1%  
2012-2020

**Shawn Zigelstein**  
Broker

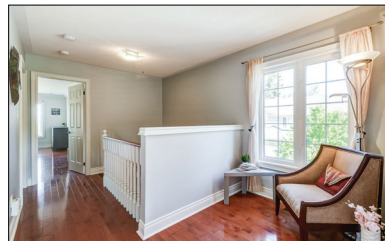




# 257 Tom Taylor Crescent, Newmarket









## PUBLIC SCHOOLS

Your neighbourhood is part of a community of Public Schools offering Elementary, Middle, and High School programming.

### Crossland PS

Designated Catchment School  
Grades PK to 8  
255 Brimson Dr

### Poplar Bank PS

Designated Catchment School  
Grades PK to 8  
400 Woodspring Ave

### Sir William Mulock SS

Designated Catchment School  
Grades 9 to 12  
705 Columbus Way

### És Norval-Morrisseau

Designated Catchment School  
Grades 7 to 12  
51 Wright St

## ALTERNATIVE & SPECIAL SCHOOLS

Nearby alternative and special education schools include:

### The Lighthouse Learning and Development

Grades K to 12  
219 Old Yonge St

### The Lighthouse Learning and Development

Grades K to 12  
219 Old Yonge St



## CATHOLIC SCHOOLS

Your neighbourhood is part of a community of Catholic Schools offering Elementary, Middle, and High School programming.

### St Paul Catholic ES

Grades PK to 8 (Assigned)  
140 William Roe Blvd

### ÉEC Saint-Jean

Grades PK to 6 (Assigned)  
90 Walton Dr

### Sacred Heart Catholic HS

Grades 9 to 12 (Assigned)  
908 Lemar Rd

### ÉSC Renaissance

Grades 7 to 12 (Assigned)  
700 Bloomington Rd

## PRIVATE SCHOOLS

The private schools nearest to you are:



### Pickering College

Grades PK to 12  
16945 Bayview Ave

### Country Garden Montessori Academy

Grades PK to 12  
601 Newpark Blvd

### Aurora Montessori School

Grades PK to 8  
330 Industrial Pkwy N

### St. Andrew's College

Grades 5 to 12  
15800 Yonge St

## PARKS & REC.

This home is located in park heaven, with 4 parks and a long list of recreation facilities within a 20 minute walk from this address.



### George Luesby Park

375 Rittas Ave



4 min

### Quaker Hill Park

443 Dixon Blvd



8 min

### Ray Tinney Recreation Complex

100 Eagle Street West



9 min

### FACILITIES WITHIN A 20 MINUTE WALK

- |                     |                    |
|---------------------|--------------------|
| 1 Pool              | 3 Playgrounds      |
| 5 Sports Fields     | 6 Tennis Courts    |
| 2 Basketball Courts | 4 Ball Diamonds    |
| 2 Rinks             | 1 Community Centre |
| 3 Trails            | 1 Multi-Use Pad    |

## TRANSIT

Public transit is at this home's doorstep for easy travel around the city. The nearest street transit stop is only a 4 minute walk away and the nearest rail transit stop is a 34 minute walk away.

**Nearest Rail Transit Stop**  
Newmarket GO

**Nearest Street Level Transit Stop**  
Yonge St / Clearmeadow Blvd



4 min

## SAFETY

With safety facilities in the area, help is always close by. Facilities near this home include a fire station, a police station, and a hospital within 2.95km.

**Southlake Regional Health Centre**  
596 Davis Dr

**Fire Station**  
125 McCaffrey Rd

**Police Station**  
240 Prospect Street

## CONVENIENCE

This home is located near everyday amenities to make your daily errands easier.

**Coffee**      **Gym**  
 **Grocery**      **Gas Station**



## \*\*\*UPGRADED 3 BEDROOM 3 WASHROOM EXECUTIVE END UNIT TOWNHOUSE IN NEWMARKET\*\*\*

10+++, Over \$70K in Upgrades!!! One of Largest In The Subdivision, Great Open Concept Layout, 9Ft Smooth Ceilings, Crown Mouldings, Hardwood Floors on Main and Upper, Freshly Painted, Stainless Steel Appliances, Kitchen With Granite Expanded Cabinets With Valance, Upgraded Light Fixtures, 2nd Floor Laundry, Entrance From Garage!!! Close To Yonge, Hwy 404, 400 And Public Transit. Near Schools, Parks, Swimming/Ice Centre, Transit & York Office. Quiet Neighbourhood. Don't Miss On This Great Opportunity!

Extras: All Upgraded Electric Light Fixtures, All Window Coverings, All Existing Stainless Steel Appliances: Flat Top Stove, Range Hood Microwave, Built-In Dishwasher, French Door Fridge, A/C, Central Vac, Potlights & More!

Excluded: Basement Fridge and Freezer, Mirrors Outside of Bathrooms, TVs and Brackets

Taxes: \$3,950.80/2021 Road Maintenance: \$93/month