

# 23 Reed Drive

[www.23Reed.com](http://www.23Reed.com)



**Vanessa Oliveira**  
Sales Representative



TEAM **ZOLD**

Your Home • Your Life • Your Realtors

*Working For You!*

**905.731.2000**  
[www.teamzold.com](http://www.teamzold.com)



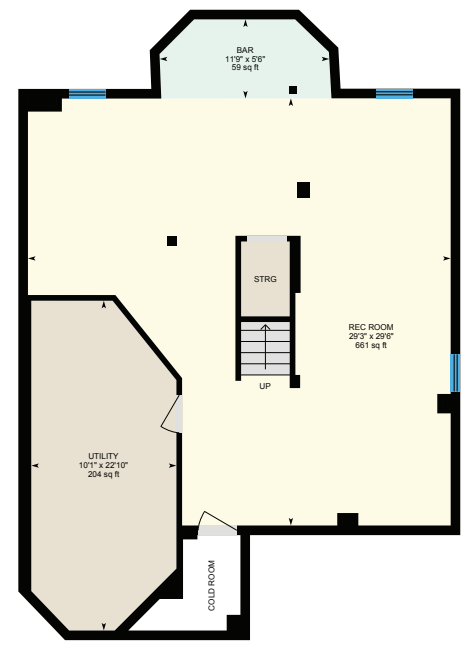
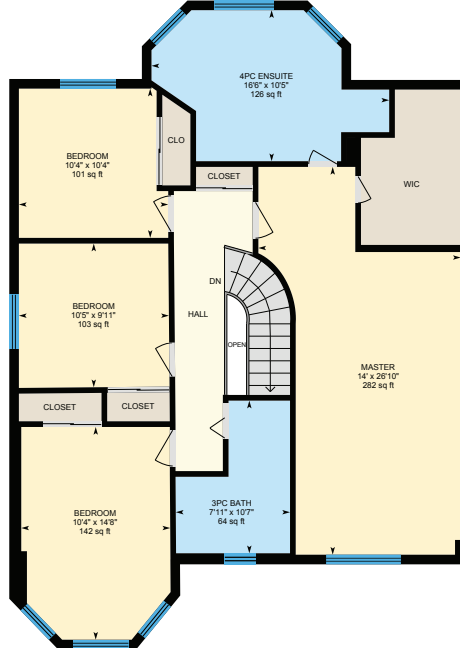
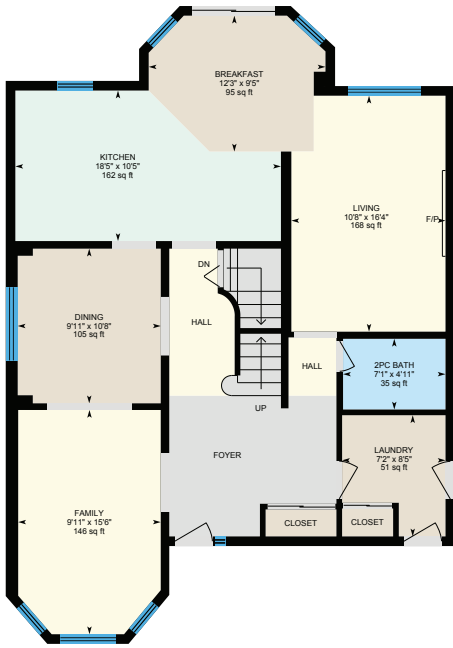
ROYAL LEPAGE  
**CHAIRMAN'S CLUB**  
NATIONAL TOP 1%  
2012-2020

**Shawn Zigelstein**  
Broker





# 23 Reed Drive









## 23 Reed Drive, Ajax, ON, L1S5S2

### PUBLIC SCHOOLS

Your neighbourhood is part of a community of Public Schools offering Elementary, Middle, and High School programming.

#### Roland Michener PS

Designated Catchment School  
Grades PK to 8  
95 Ritchie Ave

#### Ajax HS

Designated Catchment School  
Grades 9 to 12  
105 Bayly St E

#### É Éléonore-Marion

Designated Catchment School  
Grades PK to 8  
2235 Brock Rd

#### É Ronald-Marion

Designated Catchment School  
Grades 7 to 12  
2235 Brock Rd

### ALTERNATIVE & SPECIAL SCHOOLS

Nearby alternative and special education schools include:

#### Father Donald MacLellan Catholic Secondary

Grades 9 to 12  
458 Fairall St

#### Exceptional Learning Centre

Grades K to 8  
520 Westney Rd S



### CATHOLIC SCHOOLS

Your neighbourhood is part of a community of Catholic Schools offering Elementary, Middle, and High School programming.

#### ÉEC Notre-Dame-de-la-Jeunesse-Ajax

Grades PK to 6 (Assigned)  
71 Ritchie Ave

#### St. Francis de Sales Catholic School

Grades PK to 8 (Assigned)  
72 Church St S

#### Archbishop Denis O'Connor Catholic HS

Grades 9 to 12 (Assigned)  
80 Mandrake St

#### ÉSC Saint-Charles-Garnier

Grades 7 to 12 (Assigned)  
4101 Baldwin St S

### PRIVATE SCHOOLS

The private schools nearest to you are:



#### Cambridge International Academy

Grades 6 to 12  
130 Commercial Ave

#### Harwood Montessori School

Grades PK to 3, Ungraded  
23 Church St S

#### Brock Elementary School

Grades PK to 8  
2065 Brock Rd

#### Pickering Christian School

Grades K to 8  
162 Rossland Rd E

### PARKS & REC.

This home is located in park heaven, with 4 parks and a long list of recreation facilities within a 20 minute walk from this address.



#### Roland Michener Park

Ritchie Ave



2 min

#### Cedar Park

Cedar St



11 min

#### Picov Parkette

Rotherglen Road S



7 min

#### FACILITIES WITHIN A 20 MINUTE WALK

4 Playgrounds 3 Sports Fields  
3 Basketball Courts 5 Ball Diamonds  
2 Multi-Use Pads

### TRANSIT

Public transit is at this home's doorstep for easy travel around the city. The nearest street transit stop is only a 4 minute walk away and the nearest rail transit stop is a 8 minute walk away.

#### Nearest Rail Transit Stop

Ajax GO



8 min

#### Nearest Street Level Transit Stop

Westney Northbound at Ritchie



4 min

### SAFETY

With safety facilities in the area, help is always close by. Facilities near this home include a fire station, a hospital, and a police station within 2.89km.

#### Lakeridge Health - Ajax Pickering Hospital

580 Harwood Ave S

#### Fire Station

40 Westney Road North

#### Police Station

1710 Kingston Rd

### CONVENIENCE

This home is located near everyday amenities to make your daily errands easier.

#### Coffee

#### Gym

#### Grocery

#### Gas Station



HoodQ

Disclaimer: These materials have been prepared for shawn@hoodq.com and are not intended to solicit buyers or sellers currently under contract with a brokerage. By accessing this information you have agreed to our terms of service, which are hereby incorporated by reference. This information may contain errors and omissions. You are not permitted to rely on the contents of this information and must take steps to independently verify its contents with the appropriate authorities (school boards, governments etc.). As a recipient of this information, you agree not to hold us, our licensors or the owners of the information liable for any damages, howsoever caused.

## \*\*\*\*\*Wonderful Family Friendly Home On A Great Quiet Street\*\*\*\*\*

Featuring A Fantastic Floor Plan With An Open Concept Design, Gourmet Renovated Eat In Kitchen, Hardwood Floors, Prof Fin Bsmt With A Large Rec Room, Bar Area And New Carpet To Keep You Nice And Warm! Freshly Painted, Just Move In And Enjoy Nights In Front Of The Wood Burning Fireplace And Relax In Your New Home! Close To Great Schools, Parks, Shopping, Hospital, 401, And A Quick Walk To The Ajax GO Station.

Included: Existing Stainless Steel Appliances (GE Adora Gas Stove, Frigidaire Fridge, Hood Fan, GE Built-In Dishwasher), Nest Thermostat, TVs and Mounts in Family Room and Master, Bar in Basement, Garage Door Opener and Remotes, Central Vac (No Accessories), All Electric Light Fixtures, All Window Coverings, Shelving in Garage.

Excludes: Backyard Umbrella, Water Filtration System, Freezer in Basement, Shelving in Basement Storage Room, Wine Fridge in Basement. Rental: Hot Water Tank

**Lot: 36.81 ft x 134.47 ft ~ Taxes: \$5,574.48/2020**

Royal LePage Your Community Realty does not warrant or guarantee the information on this feature sheet.