

WELCOME TO

235 Rhodes Circle

www.235Rhodes.com



Marek Kloda
Broker



TEAM **ZOLD**

Your Home • Your Life • Your Realtors

Working For You!

905.731.2000
www.teamzold.com

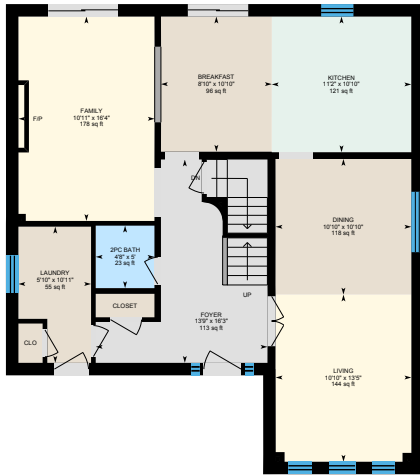


ROYAL LEPAGE
CHAIRMAN'S CLUB
NATIONAL
TOP 1%
LIFETIME MEMBER

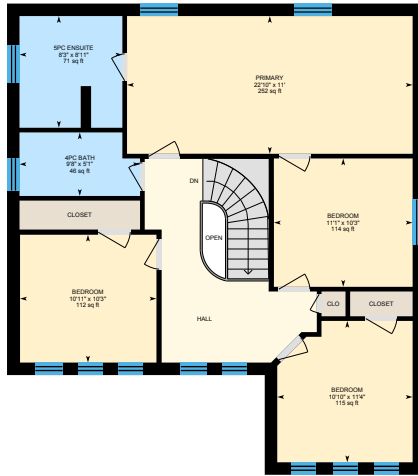


Shawn Zigelstein
Broker

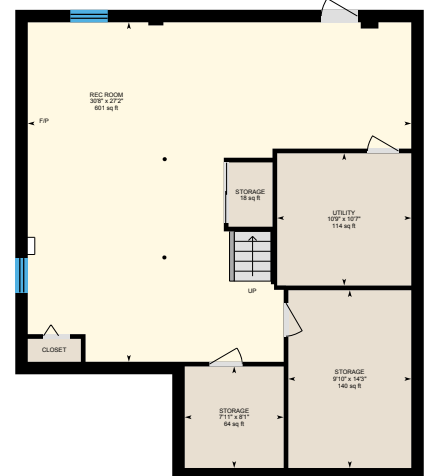
235 Rhodes Circle, Newmarket



1st Floor
Exterior Area 1093.98 sq ft



2nd Floor
Exterior Area 1084.86 sq ft



Basement (Below Grade)
Exterior Area 1122.72 sq ft





PUBLIC SCHOOLS

Your neighbourhood is part of a community of Public Schools offering Elementary, Middle, and High School programming.

Crossland PS

Designated Catchment School
Grades PK to 8
255 Brimson Dr

Sir William Mulock SS

Designated Catchment School
Grades 9 to 12
705 Columbus Way

Poplar Bank PS

Designated Catchment School
Grades 3 to 8
400 Woodspring Ave

ÉS Norval-Morrisseau

Designated Catchment School
Grades 7 to 12
51 Wright St

CATHOLIC SCHOOLS

Your neighbourhood is part of a community of Catholic Schools offering Elementary, Middle, and High School programming.

St Nicholas Catholic ES

Grades PK to 8
480 Keith Ave

ÉÉC Saint-Jean

Grades PK to 6
90 Walton Dr

Sacred Heart Catholic HS

Grades 9 to 12
908 Lemar Rd

ÉSC Renaissance

Grades 7 to 12
700 Bloomington Rd

PRIVATE SCHOOLS

The private schools nearest to you are:



St. Andrew's College

Grades 5 to 12
15800 Yonge St

Pickering College

Grades PK to 12
16945 Bayview Ave

Aurora Montessori School

Grades PK to 8
330 Industrial Pkwy N

Country Garden Montessori Academy

Grades PK to 12
601 Newpark Blvd

PARKS & REC.

This home is located in park heaven, with 4 parks and a long list of recreation facilities within a 20 minute walk from this address.



Joe Persechini Park

385 McCaffrey Road



8 mins

Whipper Billy Watson Park

475 Clearmeadow Boulevard



9 mins

Kirby Crescent Park

329 Alex Doner Dr



8 mins

FACILITIES WITHIN A 20 MINUTE WALK

4 Playgrounds
1 Pool
2 Rinks
2 Tennis Courts
1 Basketball Court
4 Ball Diamonds
5 Sports Fields
1 Community Centre
3 Trails

TRANSIT

Public transit is at this home's doorstep for easy travel around the city. The nearest street transit stop is only a 4 minute walk away and the nearest rail transit stop is a 54 minute walk away.

Nearest Rail Transit Stop
Newmarket GO

Nearest Street Level Transit Stop
Bathurst St / Keith Av



4 mins

SAFETY

With safety facilities in the area, help is always close by. Facilities near this home include a fire station, a police station, and a hospital within 4.47km.

Southlake Regional Health Centre
596 Davis Dr

Fire Station
125 McCaffrey Rd

Police Station
240 Prospect Street



WELCOME TO 235 RHODES CIRCLE!!!

One Of The Best Streets In Glenway Estates Area Of Newmarket! This Exquisite 4 Bedroom Residence Offers A Seamless Fusion Of Modern Luxury And Classic Sophistication, Promising An Unparalleled Living Experience. As You Step Through The Grand Entrance, You Notice The Friendly Charm Making It Feel Like You Are Finally Home! Nestled On A Pool Size Lot With Spacious Living Areas And Updated Kitchen With Stainless Steel Appliances & Gas Stove It Is A True Chef's Dream Come True! Entertainment Awaits Around Every Corner, From The Inviting Family Room With A Brick Fire Place To The Formal Dining Room Where Unforgettable Dinners Are Shared. Serene Primary Bedroom Has A Spa-Like Ensuite Bath And Custom Wardrobe Cabinets Fit For Any Fashion Lover. After A Busy Day You Can Unwind On A Tranquil Patio, With In An Idyllic Setting For Peaceful Contemplation Under The Stars. This Lovely Home Offers Proximity To Top-Rated Schools, Parks, Ray Twinney Sports Centre, Shopping At Upper Canada, Go Bus, Transit And Great Dining!!!

Extras: All Existing Appliances: GE Profile Gas Stove, Samsung Stainless Steel French Door Fridge With Bottom Freezer, Stainless Steel Range Hood, Bosh Stainless Steel Built-In Dishwasher, , All Electrical Light Fixtures, Potlights, Gas Fireplace, Speaker System and Wall Mounted Speakers In The Family Room, TV Mounting Brackets In The Master Bedroom And Family Room, Closets Organizers, All Window Coverings, Garage Doors and Openers, Furnace, A/C, Water Heater, Filtration System Including 20" Pre-Filter, 48" Carbon Filter And 48" Descaling Bed, Electric Vehicle ChargePoint 32A Level 2 Charger (Fully Permitted And Inspected), Gazebo With Lights & Fan, Trampoline.

Excluded: The Auxiliary Freezer And Fridge In The Basement, TV Mounting Bracket In The Basement, TV In Master Bedroom, Maytag Gray Washer & Dryer.

Lot Irregular: 56.58 ft x 129.88 ft | Property Taxes: \$5,998.14/ 2023

Royal LePage Your Community Realty Brokerage does not warrant or guarantee the information in this feature sheet.