

WELCOME TO

22 Clarissa Drive #1404



Al DiRezze
Broker



TEAM **ZOLD**

Your Home • Your Life • Your Realtors

Working For You!

905.731.2000
www.teamzold.com



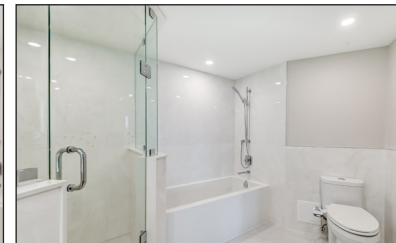
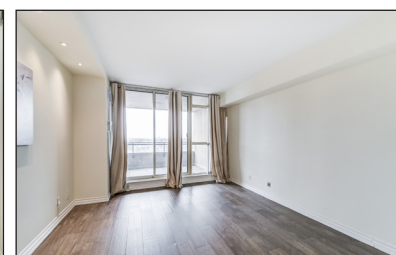
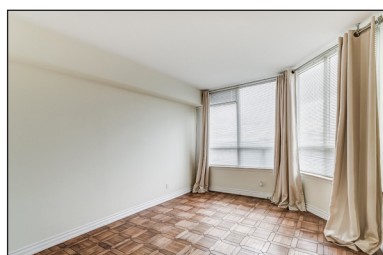
ROYAL LEPAGE
CHAIRMAN'S CLUB
NATIONAL TOP 1%
LIFETIME MEMBER



Shawn Zigelstein
Broker

22 Clarissa Drive #1404, Richmond Hill





PUBLIC SCHOOLS

Your neighbourhood is part of a community of Public Schools offering Elementary, Middle, and High School programming.

Walter Scott PS

Designated Catchment School
Grades PK to 8
500 Major Mackenzie Dr E

Michaëlle Jean PS

Designated Catchment School
Grades 1 to 3
320 Shirley Dr

Alexander MacKenzie HS

Designated Catchment School
Grades 9 to 12
300 Major MacKenzie Dr W

Beverly Acres PS

Designated Catchment School
Grades 4 to 8
283 Neal Dr

Académie de la Moraine

Designated Catchment School
Grades PK to 6
115 George St

ÉS Norval-Morrisseau

Designated Catchment School
Grades 7 to 12
51 Wright St

ALTERNATIVE & SPECIAL SCHOOLS

Nearby alternative and special education schools include:

YRDSB Continuing Education

Grades 9 to 12
11160 Yonge St



CATHOLIC SCHOOLS

Your neighbourhood is part of a community of Catholic Schools offering Elementary, Middle, and High School programming.

St Joseph Catholic ES

Grades PK to 8 (Assigned)
301 Roney Ave

ÉEC Le-Petit-Prince

Grades PK to 6 (Assigned)
79 Avro Rd

Our Lady Queen of the World Catholic Academy

Grades 9 to 12 (Assigned)
10475 Bayview Ave

ÉSC Renaissance

Grades 7 to 12 (Assigned)
700 Bloomington Rd



PRIVATE SCHOOLS

The private schools nearest to you are:



Quantum Academy

Grades 1 to 12
9555 Yonge St

Richmond Hill Montessori Elementary School

Grades PK to 8
189 Weldrick Rd E

Discovery Academy

Grades K to 12
10030 Yonge St

Jingbao Bilingual Montessori School

Grades PK to 3
265 16th Ave



PARKS & REC.

This home is located in park heaven, with 4 parks and 8 recreation facilities within a 20 minute walk from this address.



Vanderburgh Park

Bluesky Crescent and Nightstar Dr
5 min



Hillsview Park

Church St S and Sunshine Dr.
7 min



German Mills Creek

Weldrick Road East
6 min



FACILITIES WITHIN A 20 MINUTE WALK

2 Playgrounds
2 Basketball Courts
1 Trail
1 Sports Field
1 Ball Diamond
1 Picnic Facilities

TRANSIT

Public transit is at this home's doorstep for easy travel around the city. The nearest street transit stop is only a 2 minute walk away and the nearest rail transit stop is a 18 minute walk away.

Nearest Rail Transit Stop
Richmond Hill GO
18 min

Nearest Street Level Transit Stop
Weldrick Rd / Church St
2 min

SAFETY

With safety facilities in the area, help is always close by. Facilities near this home include a police station, a fire station, and a hospital within 1.56km.

Mackenzie Richmond Hill Hospital
10 Trench St

Fire Station
191 Major Mackenzie Drive West

Police Station
171 Major Mackenzie Drive West

CONVENIENCE

This home is located near everyday amenities to make your daily errands easier.

Coffee **Gym**

Grocery **Gas Station**



*** SPECTACULAR CORNER UNIT. SUNNY SOUTH WEST EXPOSURE ***

Split 2 Bedroom, 2 Bathrooms, Formal Den, Living & Dining Room, Renovated Kitchen, Built-In Appliances, Breakfast Area, Walkout To Balcony. Primary Bedroom, Walk-In Closet, Walk-Out To Balcony, 4 Piece Ensuite With Soaker Tub & Separate Shower. Amazing Amenities, Pools, Exercise Room, Billiard Room, Party Room, 2 Car Underground Parking(Tandem). Well Managed & Hallway Renovations Underway. Amazing Panoramic Southwest View. Bright & Spacious.
Close To Shopping, Transit, Library, Rec Centre, Parks And More.

Extras:

Built-In Appliances: Fridge, Cooktop, Oven, Microwave, Dishwasher; Washer, Dryer, Window Coverings, Electric Light Fixtures.

Locker, 2 Car Tandem Parking On P1 Close To Door.

Maintenance Fees: \$1,284.64/ month | Taxes: \$3,064.87/2022

Royal LePage Your Community Realty Brokerage does not warrant or guarantee the information in this feature sheet.