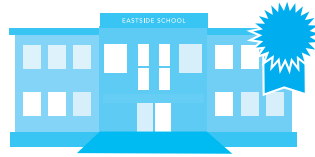


228 Reg Harrison Trail | NEWMARKET

SCHOOLS

With good assigned and local public schools near this home, your kids can thrive in the neighbourhood.



Crossland PS

Designated Catchment School
Grades PK to 8
255 Brimson Dr

Poplar Bank PS

Designated Catchment School
Grades 3 to 8
400 Woodspring Ave

Sir William Mulock SS

Designated Catchment School
Grades 9 to 12
705 Columbus Way

ÉS Norval-Morrisseau

Designated Catchment School
Grades 7 to 12
51 Wright St

PARKS & REC.

This home is located in park heaven, with 4 parks and a long list of recreation facilities within a 20 minute walk from this address.



Kirby Crescent Park

329 Alex Doner Dr
6 mins

Joe Persechini Park

385 McCaffrey Road
10 mins

Ray Twinney Recreation Complex

100 Eagle Street West
6 mins

FACILITIES WITHIN A 20 MINUTE WALK

4 Playgrounds 3 Ball Diamonds
1 Pool 6 Sports Fields
2 Rinks 1 Community Centre
2 Tennis Courts 3 Trails
1 Basketball Court

TRANSIT

Public transit is at this home's doorstep for easy travel around the city. The nearest street transit stop is only a 2 minute walk away and the nearest rail transit stop is a 40 minute walk away.

Nearest Rail Transit Stop
Newmarket GO

Nearest Street Level Transit Stop
Alex Doner Cr / Crossland Gate 2 mins

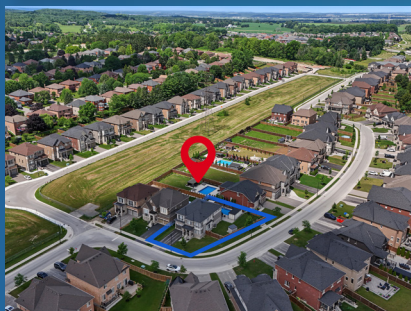
SAFETY

With safety facilities in the area, help is always close by. Facilities near this home include a fire station, a police station, and a hospital within 3.44km.

Southlake Regional Health Centre
596 Davis Dr

Fire Station
125 McCaffrey Rd

Police Station
240 Prospect Street



Scan to view more information!

www.228regharrison.com



TEAM ZOLD

Call me for more information on this beautiful home!



Shawn Zigelstein
Broker

289-GET-ZOLD

office 416.443.0300

65B West Beaver Creek Rd - 2nd Floor
Richmond Hill, ON L4B 1K4

Not intended to solicit those currently under contract with another brokerage.

Prospective purchasers should satisfy themselves as to the accuracy of the information contained in this feature sheet. All measurements are approximate. The statements contained herein are based on sources which we believe are reliable, but for which we assume no responsibility.

228 Reg Harrison Trail

Welcome Home To This Beautifully Customized Executive Home In The Prestigious Glenway Community

Featuring Over 3000 Square Feet Of Refined Living With Builder-Designed Upgrades And Modern Enhancements Throughout. Freshly Painted And Featuring Brand New Bedroom Flooring, The Interior Feels Bright, Elevated, And Meticulously Maintained.

The Main Floor Showcases An Impressive Open Concept Layout Designed For Both Everyday Comfort And Upscale Entertaining. A Gourmet Kitchen Anchors The Space With A Massive Island, Top-Tier Appliances, Pot Lights, And Generous Workspace. The Adjoining Living And Dining Areas Offer Exceptional Scale And Natural Light, Creating A Seamless Flow For Gatherings. A Main Floor Office Provides A Private And Functional Space For Work Or Study. The Second Level Features Four Spacious Bedrooms, Each Offering Comfort And Flexibility For Families Of All Sizes. Custom Builder Selections Are Evident Throughout, From The Proportions Of The Rooms To The Quality Of The Finishes And The Overall Sense Of Elegance.

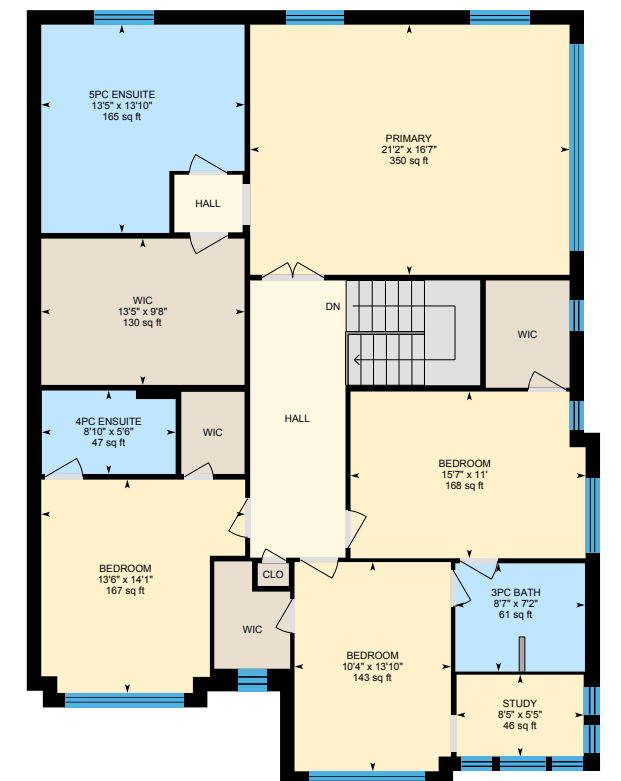
A Walkout Leads To A Private Backyard Retreat That Feels Like A Personal Resort. The Inground Pool, Waterfall Feature, Gazebo, And Multiple Seating Areas Create An Outdoor Environment Ideal For Summer Enjoyment And Memorable Entertaining. It Is A True Oasis Designed For Relaxation And Hosting. Glenway Is Known For Its Established Streetscape, Excellent Schools, Parks, And Convenient Access To Amenities. Commuters Benefit From Being Minutes To Both Highway 400 And Highway 404, Offering Efficient Travel Across The GTA.

228 Reg Harrison Trail Delivers A Rare Combination Of Custom Design, Modern Upgrades, And A Stunning Backyard Escape In One Of Newmarket's Most Desirable Neighbourhoods. A Standout Property With Exceptional Presence And Lifestyle Appeal.

228 Reg Harrison Trail



Main Floor
Exterior Area 1477.86 sq ft



2nd Floor
Exterior Area 1812.04 sq ft

