

223 Harvie Road

www.223harvie.com



Marek Kloda
Broker

Your Community
REALTY
ROYAL LEPAGE
BROKERAGE INDEPENDENTLY OWNED & OPERATED

TEAM **ZOLD**

Your Home • Your Life • Your Realtors

Working For You!

905.731.2000
www.teamzold.com

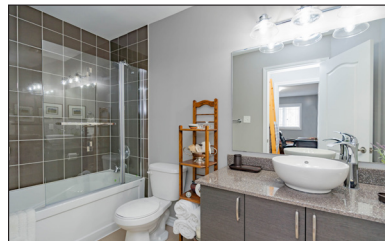
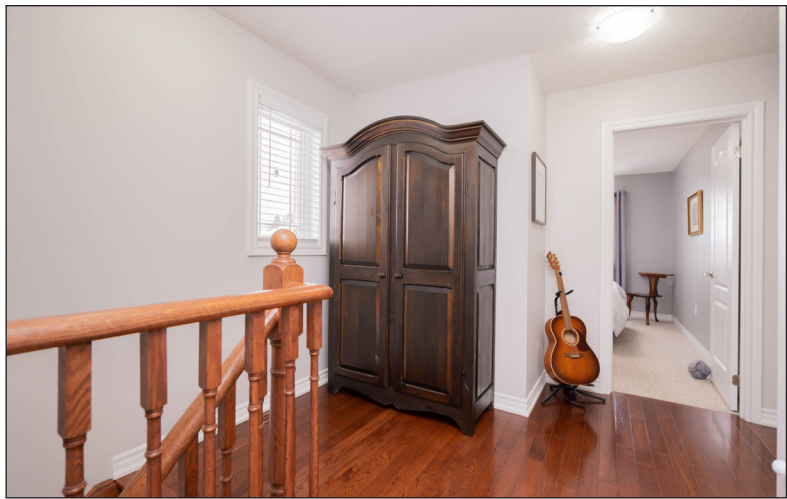


ROYAL LEPAGE
CHAIRMAN'S CLUB
NATIONAL TOP 1%
2012-2019



Shawn Zigelstein
Broker





PUBLIC SCHOOLS

Your neighbourhood is part of a community of Public Schools offering Elementary, Middle, and High School programming.

Armitage Village PS

Designated Catchment School
Grades PK to 8
125 Savage Rd

Sir William Mulock SS

Designated Catchment School
Grades 9 to 12
705 Columbus Way

Mazo De La Roche PS

Designated Catchment School
Grades 1 to 8
860 Arnold Crescent

ÉS Norval-Morrisseau

Designated Catchment School
Grades 7 to 12
51 Wright St

ALTERNATIVE & SPECIAL SCHOOLS

Nearby alternative and special education schools include:

The Lighthouse Learning and Development

Grades K to 12
219 Old Yonge St

The Lighthouse Learning and Development

Grades K to 12
219 Old Yonge St



CATHOLIC SCHOOLS

Your neighbourhood is part of a community of Catholic Schools offering Elementary, Middle, and High School programming.

Notre Dame Catholic ES

Grades PK to 8 (Assigned)
715 Kingsmere Ave

ÉC Saint-Jean

Grades PK to 6 (Assigned)
90 Walton Dr

St. Maximilian Kolbe HS

Grades 9 to 12 (Assigned)
278 Wellington St E

ÉC Renaissance

Grades 7 to 12 (Assigned)
700 Bloomington Rd

PRIVATE SCHOOLS

The private schools nearest to you are:



Country Garden Montessori Academy

Grades PK to 12
601 Newpark Blvd

Pickering College

Grades PK to 12
16945 Bayview Ave

AIS Montessori and Elementary School

Grades PK to 8
415 Pickering Crescent

Aurora Montessori School

Grades PK to 8
330 Industrial Pkwy N

PARKS & REC.

This home is located in park heaven, with 4 parks and a long list of recreation facilities within a 20 minute walk from this address.



Audrie Sanderson Park

620 McBean Avenue



5 min

Art Ferguson Park

Bayview and Brooker Ridge



9 min

Willowick Park

615 Carberry Street



7 min

FACILITIES WITHIN A 20 MINUTE WALK

4 Playgrounds 1 Sports Field
2 Tennis Courts 2 Basketball Courts
1 Ball Diamond 4 Trails

TRANSIT

Public transit is at this home's doorstep for easy travel around the city. The nearest street transit stop is only a minute walk away and the nearest rail transit stop is a 38 minute walk away.

Nearest Rail Transit Stop

Newmarket GO

Nearest Street Level Transit Stop

Bayview Av / Newpark Blvd



1 min

SAFETY

With safety facilities in the area, help is always close by. Facilities near this home include a police station, a fire station, and a hospital within 2.83km.

Southlake Regional Health Centre

596 Davis Dr

Fire Station

984 Gorham St

Police Station

240 Prospect Street

CONVENIENCE

This home is located near everyday amenities to make your daily errands easier.



Disclaimer: These materials have been prepared for show@hoodq.com and are not intended to solicit buyers or sellers currently under contract with a brokerage. By accessing this information you have agreed to our terms of service, which are hereby incorporated by reference. This information may contain errors and omissions. You are not permitted to rely on the contents of this information and must take steps to independently verify its contents with the appropriate authorities (school boards, governments etc.). As a recipient of this information, you agree not to hold us, our licensors or the owners of the information liable for any damages, howsoever caused.



MOVE IN READY, END UNIT TOWNHOME!

Presenting Beautifully Remodelled 3 Bedroom Condo Townhome in South Barrie, Bright and Open Concept with Hardwood on Main, 2 Renovated 4 Piece Baths Upstairs, Master with Walk-in Glass Shower, Build-In Wardrobe, Freshly Painted, Unspoiled Above Ground Walk-Out Basement with Above Grade Windows and Full Exterior Maintenance included in Fees.

Maintenance fees include everything outside: all maintenance and repairs, painting, window cleaning, weekly garbage pick-up, professionally maintained lawn and gardens, all snow removal, incl. all walkways, stairs and driveway, and a condo reserve fund.

Extras: SS GE Profile French Door Fridge with Bottom Freezer, GE Built-in Microwave, Vissani Hood Fan, Frigidaire Dishwasher, Frigidaire Flat Top Stove, Whirlpool White Front Load Washer/Dryer, Gas Fire Place, HWT (owned).

Excl: Basement Freezer, Wall Mounted TVs, All Furnishings and Personal items, Bed Headboards

Maintenance Fees: \$604.60 Taxes: \$3,861.00/2020