

21 Granger Avenue

www.21Granger.com



Shawn Zigelstein
Broker



ROYAL LEPAGE
CHAIRMAN'S CLUB
NATIONAL TOP 1%
2012-2019

TEAM **ZOLD**

Your Home • Your Life • Your Realtors

Working For You!

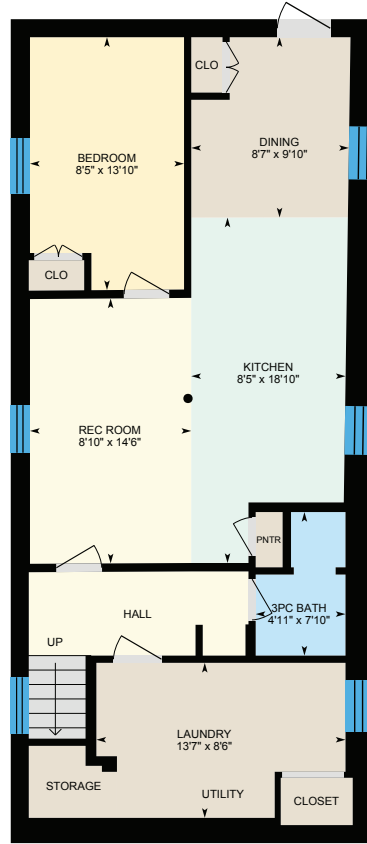
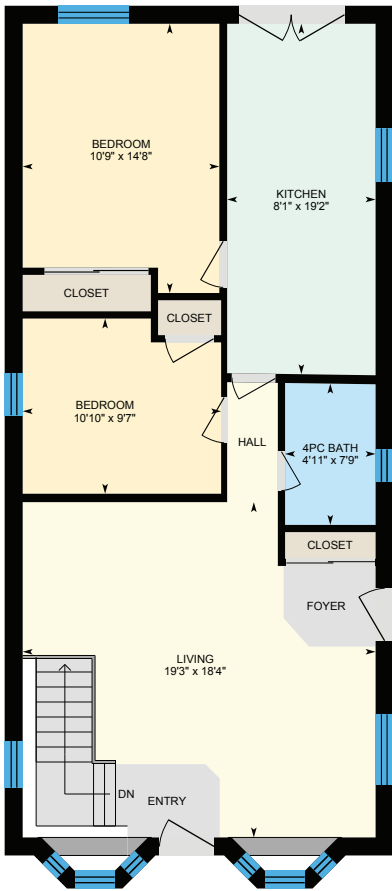
905.731.2000
www.teamzold.com

Your Community
REALTY
ROYAL LEPAGE
BROKERAGE INDEPENDENTLY OWNED & OPERATED

Vanessa Oliveira
Sales Representative



21 Granger Avenue





21 Granger Avenue

PUBLIC SCHOOLS

Your neighbourhood is part of a community of Public Schools offering Elementary, Middle, and High School programming.

Norman Cook Junior Public School

Designated Catchment School
Grades PK to 6
725 Danforth Rd

Élém Jeanne-Lajoie

Designated Catchment School
Grades PK to 6
150 Carnforth Rd

Robert Service Senior Public School

Designated Catchment School
Grades 7 to 8
945 Danforth Rd

Birchmount Park Collegiate Institute

Designated Catchment School
Grades 9 to 12
3663 Danforth Ave

Collège français secondaire

Designated Catchment School
Grades 7 to 12
100 Carlton St

ALTERNATIVE & SPECIAL SCHOOLS

Nearby alternative and special education schools include:

South East Year Round Alternative Centre

Grades 9 to 12
720 Midland Ave

Scarborough Centre for Alternative Studies

Grades 10 to 12
720 Midland Ave

CATHOLIC SCHOOLS

Your neighbourhood is part of a community of Catholic Schools offering Elementary, Middle, and High School programming.

St. Maria Goretti Catholic School

Grades PK to 8 (Assigned)
21 Kenmark Blvd

ÉÉC Georges-Étienne-Cartier

Grades PK to 6 (Assigned)
250 Gainsborough Rd

ÉÉC du Bon-Berger

Grades PK to 6 (Assigned)
343 Jones Ave

ÉSC Père-Philippe-Lamarche

Grades 7 to 12 (Assigned)
2850 Eglinton Ave E

PRIVATE SCHOOLS

The private schools nearest to you are:



Salaheddin Islamic School

Grades 1 to 12
741 Kennedy Road

Parkside Academy

Grades 9 to 12
1071 Midland Ave

Khairul Ummah School

Grades K to 12
25 Civic Rd

Wali ul Asr School - GTA East Campus

Grades K to 12
425 McCowan Rd

PARKS & REC.

This home is located in park heaven, with 4 parks and a long list of recreation facilities within a 20 minute walk from this address.

Jeanette Park

65 Jeanette St



5 min

Glen Sheppard Park

905 Danforth Rd



8 min

Greystone Park

845 Danforth Rd



6 min

FACILITIES WITHIN A 20 MINUTE WALK

4 Playgrounds 1 Sports Field
2 Basketball Courts 2 Splash Pads
6 Ball Diamonds 1 Trail
2 Multi-Use Pads



TRANSIT

Public transit is at this home's doorstep for easy travel around the city. The nearest street transit stop is only a 2 minute walk away and the nearest rail transit stop is a 7 minute walk away.

Nearest Rail Transit Stop

Scarborough GO



7 min

Nearest Street Level Transit Stop

Danforth Rd at Magnolia Ave



2 min

SAFETY

With safety facilities in the area, help is always close by. Facilities near this home include a fire station, a police station, and a hospital within 3.82km.

Scarborough Health Network - General Campus

3050 Lawrence Ave E

Fire Station

2575 Eglinton Ave E

Police Station

2222 Eglinton Ave E

CONVENIENCE

This home is located near everyday amenities to make your daily errands easier.



Coffee



Gym



Grocery



Gas Station



HoodQ

Disclaimer: These materials have been prepared for your marketing@yahoo.com and are not intended to solicit buyers or sellers currently under contract with a brokerage. By accessing this information you have agreed to our terms of service, which are hereby incorporated by reference. This information may contain errors and omissions. You are not permitted to rely on the contents of this information and must take steps to independently verify its contents with the appropriate authorities (school boards, governments etc.). As a recipient of this information, you agree not to hold us, our licensors or the owners of the information liable for any damages, however caused.



****IMMACULATE BUNGALOW ON LARGE LOT WITH WALK-OUT BASEMENT***

Fantastic Bungalow Located On Large 50 X 130 Foot Lot! Perfect For A Small Family Looking For Move-In-Ready Nanny/In-Law Suite. Walk-Out Basement Complete With Kitchen/Bathroom/Bedroom And With Separate Entrance To Backyard. Open Concept Main Floor Is Bright And Airy With 2 Bay Windows. Upgrades Include, Hardwood Flooring, Pot Lights, Crown Moulding And Jacuzzi Tub. Kitchen With Walk-Out To Large Back Deck/Yard Full of Mature Fruit Trees. Enjoy Your Morning Coffee On The Front Porch Of This Lovely Home! Close To All Major Amenities And Within Walking Distance To Schools And Transit.

Extras: All Electric Light Fixtures, All Window Coverings, All Existing Appliances (Kenmore Elite Flat Top Stove, GE White Fridge, GE White Built-In Microwave, Amana White Built-In Dishwasher, Kenmore White Fridge In The Basement, Kenmore White Flat Top Stove In The Basement, Whirlpool White Washer, Kenmore White Dryer), Wood Burning Stove, Oak Staircase, Jacuzzi Tub, Furnace, A/C, Garage Door Opener And Remote, Garden Shed, Fruit Trees (Apple, Plum, Pear).

Rental: HWT, Alarm System & Cameras (To Be Assumed - Bell Smart Home Monitoring).

Lot Size: 50 ft x 130 Ft ~ Property Taxes: \$3,340.35 / 2020

Royal LePage Your Community Realty does not warrant or guarantee the information on this feature sheet.