

214 Tom Taylor Crescent

www.214TomTaylor.com



Your Community
REALTY
ROYAL LEPAGE
BROKERAGE INDEPENDENTLY OWNED & OPERATED

Marek Kloda
Broker

TEAM **ZOLD**

Your Home • Your Life • Your Realtors

Working For You!

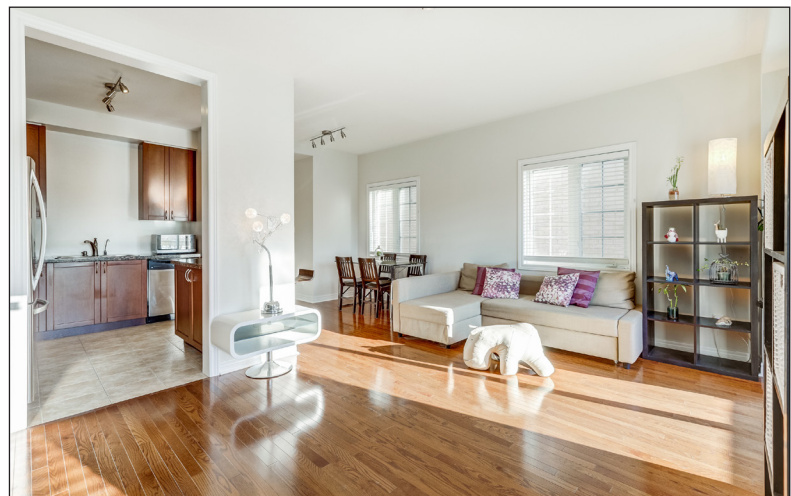
905.731.2000
www.teamzold.com

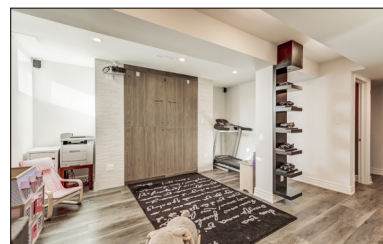
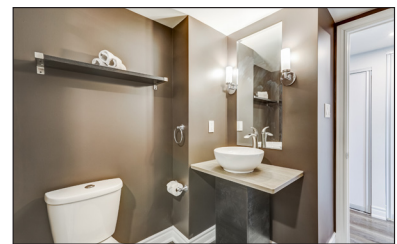
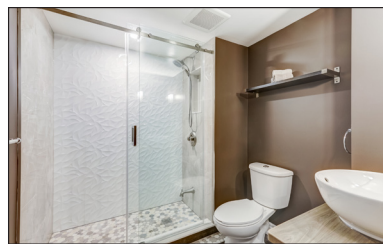


ROYAL LEPAGE
CHAIRMAN'S CLUB
NATIONAL TOP 1%
2012-2019

Shawn Zigelstein
Broker







214 Tom Taylor Cres, Newmarket, ON, L3X3E8

PUBLIC SCHOOLS

Your neighbourhood is part of a community of Public Schools offering Elementary, Middle, and High School programming.

Crossland PS

Designated Catchment School
Grades PK to 8
255 Brimson Dr

Poplar Bank PS

Designated Catchment School
Grades PK to 8
400 Woodspring Ave

Sir William Mulock SS

Designated Catchment School
Grades 9 to 12
705 Columbus Way

És Norval-Morrisseau

Designated Catchment School
Grades 7 to 12
51 Wright St

ALTERNATIVE & SPECIAL SCHOOLS

Nearby alternative and special education schools include:

The Lighthouse Learning and Development

Grades K to 12
219 Old Yonge St

The Lighthouse Learning and Development

Grades K to 12
219 Old Yonge St



CATHOLIC SCHOOLS

Your neighbourhood is part of a community of Catholic Schools offering Elementary, Middle, and High School programming.

St Paul Catholic ES

Grades PK to 8 (Assigned)
140 William Roe Blvd

ÉEC Saint-Jean

Grades PK to 6 (Assigned)
90 Walton Dr

Sacred Heart Catholic HS

Grades 9 to 12 (Assigned)
908 Lemar Rd

ÉSC Renaissance

Grades 7 to 12 (Assigned)
700 Bloomington Rd

PRIVATE SCHOOLS

The private schools nearest to you are:

Pickering College

Grades PK to 12
16945 Bayview Ave

Country Garden Montessori Academy

Grades PK to 12
601 Newpark Blvd

Aurora Montessori School

Grades PK to 8
330 Industrial Pkwy N

St. Andrew's College

Grades 5 to 12
15800 Yonge St

PARKS & REC.

This home is located in park heaven, with 4 parks and a long list of recreation facilities within a 20 minute walk from this address.



George Luesby Park

375 Ritas Ave
A B C D E

4 min

Jim Bond Park

612 Osler Ct

9 min

Quaker Hill Park

443 Dixon Blvd
A B C D E

8 min

FACILITIES WITHIN A 20 MINUTE WALK

- | | |
|---------------------|--------------------|
| 1 Pool | 3 Playgrounds |
| 5 Sports Fields | 6 Tennis Courts |
| 2 Basketball Courts | 4 Ball Diamonds |
| 2 Rinks | 1 Community Centre |
| 3 Trails | 1 Multi-Use Pad |

TRANSIT

Public transit is at this home's doorstep for easy travel around the city. The nearest street transit stop is only a 3 minute walk away and the nearest rail transit stop is a 34 minute walk away.

Nearest Rail Transit Stop
Newmarket GO

Nearest Street Level Transit Stop
Yonge St / Clearmeadow Blvd 3 min

SAFETY

With safety facilities in the area, help is always close by. Facilities near this home include a fire station, a police station, and a hospital within 2.96km.

Southlake Regional Health Centre
596 Davis Dr

Fire Station
125 McCaffrey Rd

Police Station
240 Prospect Street

CONVENIENCE

This home is located near everyday amenities to make your daily errands easier.

Coffee **Gym**
 Grocery **Gas Station**



HoodQ

Disclaimer: These materials have been prepared for shawn@teamzold.com and are not intended to solicit buyers or sellers currently under contract with a brokerage. By accessing this information you have agreed to our terms of service, which are hereby incorporated by reference. This information may contain errors and omissions. You are not permitted to rely on the contents of this information and must take steps to independently verify its contents with the appropriate authorities (school boards, governments etc.). As a recipient of this information, you agree not to hold us, our licensors or the owners of the information liable for any damages, however caused.

EXECUTIVE END UNIT TOWNHOME IN SUMMERHILL ESTATES!

Spectacular 3 Bedroom Townhouse Opportunity in Newmarket With Extra 3rd Parking Spot, Quiet, Child Friendly Crescent and No Neighbours Behind! 9' Ceilings, Dream Open Concept Kitchen With Stainless Steel Appliances, Extended Cabinets, Granite Counters, Oak Stairs, Hardwood Throughout, Large, Thermal Glazed Windows, Huge Master Bedroom With Walk-In Closet and 4 Piece Ensuite, Fin Basement with 3Pc Bath, Glass Shower, New Shingles in 2020 And So Much More!!! Close to Yonge, Upper Canada, Go, Schools and Transit!

Extras: All Electric Light Fixtures, All Window Coverings, All Existing Appliances Stainless Steel Appliances: Frigidaire Built-In Flat Top Stove, Built-In Dishwasher, LG Fridge, Front Load LG Washer/Dryer, AC, Upgraded Light Fixtures, Brand New Front Door, Water Softener with Pre-filters (2014), Murphy's Bed, Smart Switches for Lights for Alexa or Google, Movie Theatre with Surround Sound and Vinyl Water Resistant Floor in the Basement!

Excluded: Wall Mounted TVs, All Furnishings and Personal items, Bed Headboards, Wardrobe, Vanity Desk and Stool, First Alert Fire-Proof Safe. Rental: Hot Water Tank.

Lot: 23.54 ft x 87.86 ft Taxes: \$3,809.70 Road Maintenance: \$93/month

Royal LePage Your Community Realty Brokerage does not warrant or guarantee the information in this feature sheet.