

WELCOME TO

20 Olive Avenue PH01



Shawn Zigelstein
Broker



ROYAL LEPAGE
CHAIRMAN'S CLUB
NATIONAL TOP 1%
LIFETIME MEMBER

TEAM **ZOLD**

Your Home • Your Life • Your Realtors

Working For You!

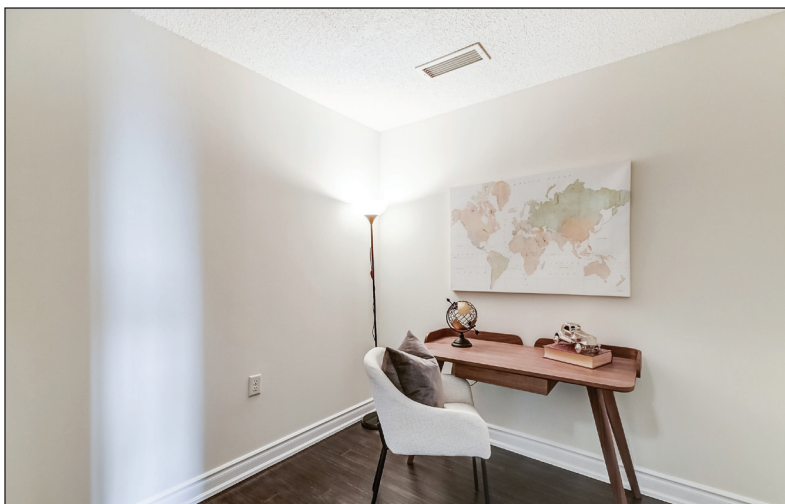
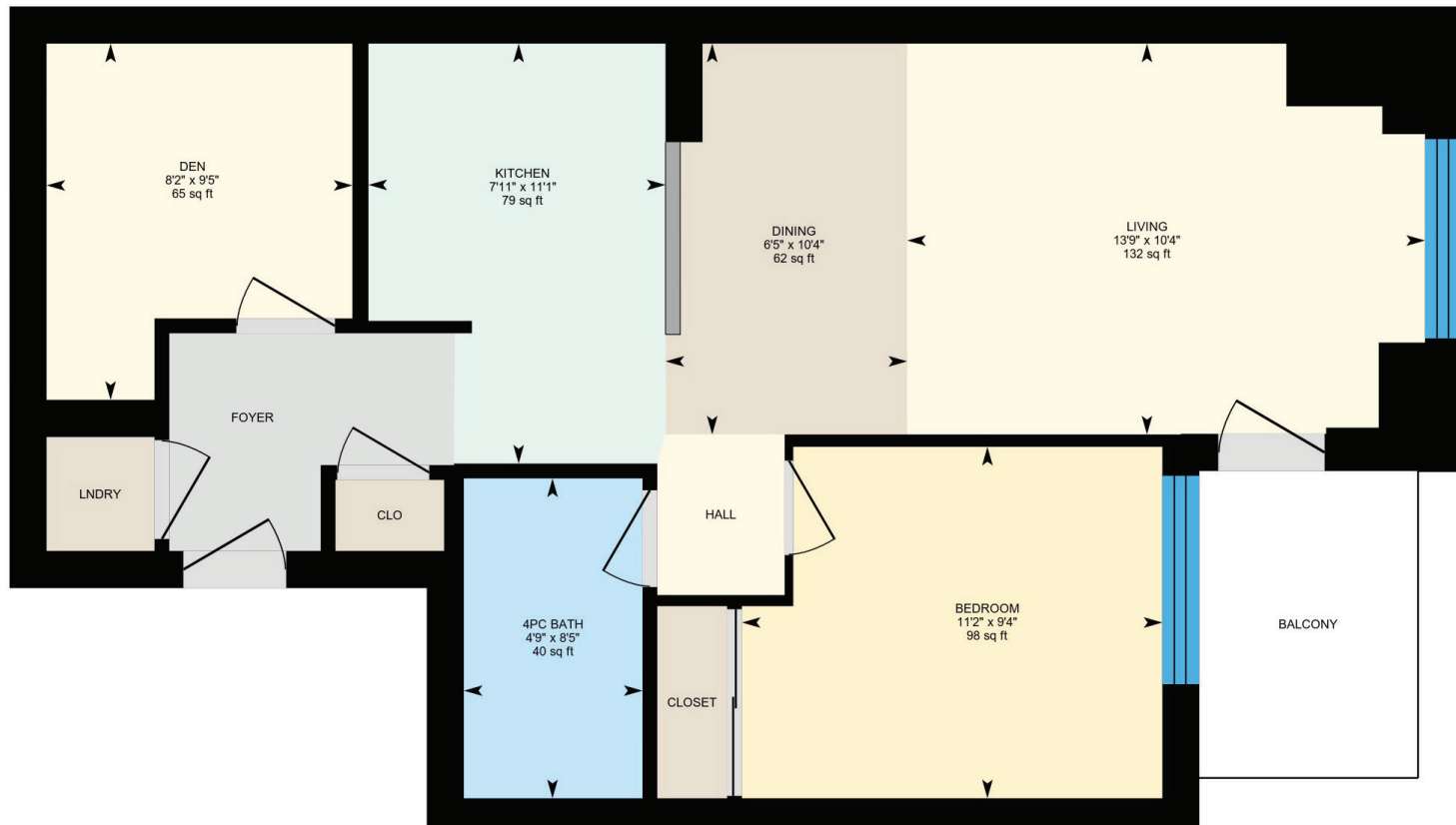
905.731.2000
www.teamzold.com

YOUR **Community**[™]
REALTY

ROYAL LEPAGE

BROKERAGE INDEPENDENTLY OWNED & OPERATED

20 Olive Avenue #PH01, Toronto





PUBLIC SCHOOLS

Your neighbourhood is part of a community of Public Schools offering Elementary, Middle, and High School programming.

Georges Vanier Secondary School
Designated Catchment School
Grades 9 to 12
3000 Don Mills Rd

É Éléon Paul-Demers
Designated Catchment School
Grades PK to 6
100 Ravel Rd

ÉS Étienne-Brûlé
Designated Catchment School
Grades 7 to 12
300 Banbury Rd

Finch Public School
Designated Catchment School
Grades PK to 5
277 Finch Ave E

Commer Valley Middle School
Designated Catchment School
Grades 6 to 8
70 Maxome Ave

Other Local Schools
Claude Watson School for the Arts
Grades 4 to 8
130 Doris Ave

ALTERNATIVE & SPECIAL SCHOOLS

Nearby alternative and special education schools include:

Drewry Secondary School
Grades 9 to 12
70 Drewry Ave



CATHOLIC SCHOOLS

Your neighbourhood is part of a community of Catholic Schools offering Elementary, Middle, and High School programming.

Blessed Trinity Catholic School
Grades PK to 8 (Assigned)
3205 Bayview Ave

ÉÉC Sainte-Madeleine
Grades PK to 6 (Assigned)
1 Ness Dr

ÉSC Monseigneur-de-Charbonnel
Grades 7 to 12 (Assigned)
110 Drewry Ave

St. Cyril Catholic School
Grades PK to 8
18 Kempford Blvd

PRIVATE SCHOOLS

The private schools nearest to you are:



Apollo High School
Grades 9 to 12
5467 Yonge St

Nobel Academy
Grades 9 to 12
5635 Yonge St

FutureSkills High School
Grades 9 to 12
5635 Yonge Street #204

King's Academy
Grades 9 to 12
77 Finch Ave W

PARKS & REC.

This home is located in park heaven, with 4 parks and a long list of recreation facilities within a 20 minute walk from this address.



Lorraine Drive Park
29 Lorraine Dr

4 min

Kenneth Park
417 Kenneth Ave

5 min

Bishop Park
45 Bishop Ave

4 min

FACILITIES WITHIN A 20 MINUTE WALK

4 Playgrounds 1 Wading Pool
4 Tennis Courts 1 Splash Pad
2 Ball Diamonds 1 Trail



TRANSIT

Public transit is at this home's doorstep for easy travel around the city. The nearest street transit stop is only a minute walk away and the nearest rail transit stop is a 3 minute walk away.

Nearest Rail Transit Stop
Finch Station 3 min

Nearest Street Level Transit Stop
Finch Ave East At Yonge St East Side 1 min

SAFETY

With safety facilities in the area, help is always close by. Facilities near this home include a fire station, a police station, and a hospital within 4.15km.

North York General Hospital
4001 Leslie St

Fire Station
12 Canterbury Pl

Police Station
30 Ellerslie Ave

CONVENIENCE

This home is located near everyday amenities to make your daily errands easier.

Coffee **Gym**
Grocery **Gas Station**



Disclaimer: These materials have been prepared for shawn@teamzold.com and are not intended to solicit buyers or sellers currently under contract with a brokerage. By accessing this information you have agreed to our terms of service, which are hereby incorporated by reference. This information may contain errors and omissions. You are not permitted to rely on the contents of this information and must take steps to independently verify its contents with the appropriate authorities (school boards, governments etc.). As a recipient of this information, you agree not to hold us, our licensors or the owners of the information liable for any damages, howsoever caused.

WELCOME HOME TO THIS STUNNING PENTHOUSE UNIT AT PRINCESS PLACE BY PEMBERTON GROUP

This West Facing Suite Is Stunning And Ready For You To Move Right In To Enjoy The Unobstructed Sunset Views Which Are Unlike Any Others In The Complex. Featuring An Amazing Layout With An Open Concept Design, Engineered Hardwood Floors, Balcony, Designer Kitchen with Granite Countertops, Floor To Ceiling Windows, Remote Control Blinds, Large Den Which Can Easily Be Used As A Second Bedroom, Parking, And A Storage Locker All Included. The Complex Is One Of The Best Managed In The Area - Gatehouse With Security, Underground Visitor Parking, Gym, Games Room, And Even Guest Suites For Out Of Town Guests. Location Is Key, And This Building Is Right Around The Corner From The Subway, Busses, Restaurants, Shopping, And Also Has Schools, Parks And Trails Just Minutes Away.

Extras:

All Existing Stainless Steel Appliances: GE Profile Fridge, GE Flat Top Stove, GE Built-In Microwave, GE Built-In Dishwasher; Kenmore Stackable Grey Washer And Dryer, All Electrical Light Fixtures, Parking, Locker.

Maintenance Fees: \$566.18/month | Taxes: \$1,979.68/2021

Royal LePage Your Community Realty Brokerage does not warrant or guarantee the information in this feature sheet.