

WELCOME TO

19 Milos Road

www.19Milos.com



ROYAL LEPAGE
CHAIRMAN'S CLUB
NATIONAL TOP 1%
LIFETIME MEMBER

Shawn Zigelstein
Broker

TEAM **ZOLD**

Your Home • Your Life • Your Realtors

Working For You!

905.731.2000
www.teamzold.com

YOUR
Community
REALTY™

ROYAL LEPAGE

BROKERAGE INDEPENDENTLY OWNED & OPERATED

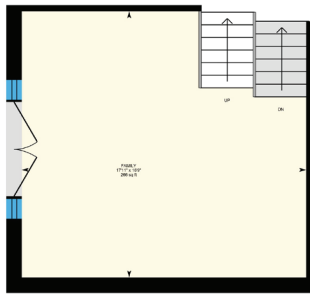
19 Milos Road, Richmond Hill



Main Floor



Upper Level

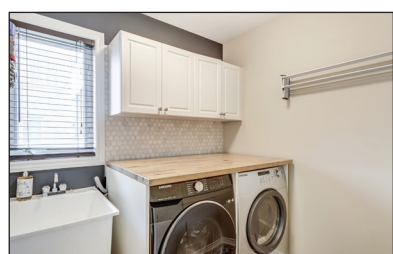
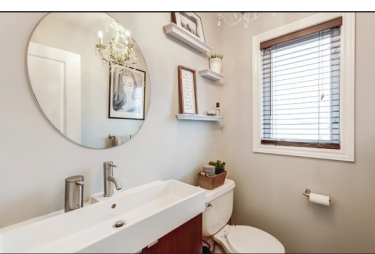


Split Level



Lower Level





PUBLIC SCHOOLS

Your neighbourhood is part of a community of Public Schools offering Elementary, Middle, and High School programming.

Beynon Fields PS

Designated Catchment School
Grades 1 to 8
258 Selwyn Rd

Académie de la Moraine

Designated Catchment School
Grades PK to 6
115 George St

ÉS Norval-Morrisseau

Designated Catchment School
Grades 7 to 12
51 Wright St

MacLeod's Landing PS

Designated Catchment School
Grades PK to 8
195 Silver Maple Rd

King City SS

Designated Catchment School
Grades 9 to 12
2001 King Rd

ALTERNATIVE & SPECIAL SCHOOLS

Nearby alternative and special education schools include:

YRDSB Continuing Education

Grades 9 to 12
11160 Yonge St

Dr. Bette Stephenson Centre for Learning

Grades 9 to 12, Adult
36 Regatta Ave

CATHOLIC SCHOOLS

Your neighbourhood is part of a community of Catholic Schools offering Elementary, Middle, and High School programming.

Father Frederick McGinn Catholic ES

Grades PK to 8
61 Brockdale St

ÉEC Le-Petit-Prince

Grades PK to 6
79 Avro Rd

Cardinal Carter Catholic SS

Grades 9 to 12
210 Old Bloomington Rd

ÉSC Renaissance

Grades PK to 12
700 Bloomington Rd

PRIVATE SCHOOLS

The private schools nearest to you are:



Richland Academy

Grades PK to 8
11570 Yonge St

Academy for Gifted Children (PACE)

Grades K to 12
12 Bond Crescent

Century Private School

Grades PK to 12
11181 Yonge St

Holy Trinity Private School

Grades PK to 12
11300 Bayview Ave

PARKS & REC.

This home is located in park heaven, with 4 parks and a long list of recreation facilities within a 20 minute walk from this address.



Philips Ridge Park

40 Mansard Drive
3 mins

Meander Park

101 Alpaca Drive
7 mins

William Neal Community Park

Alhart St and Tower Hill Rd
9 mins

FACILITIES WITHIN A 20 MINUTE WALK

4 Playgrounds
4 Basketball Courts
3 Sports Fields
1 Splash Pad
1 Sports Court
1 Trail

TRANSIT

Public transit is at this home's doorstep for easy travel around the city. The nearest street transit stop is only a 2 minute walk away and the nearest rail transit stop is a 63 minute walk away.

Nearest Rail Transit Stop

King City GO

Nearest Street Level Transit Stop

Jefferson Sdrd / Milos Rd



2 mins

SAFETY

With safety facilities in the area, help is always close by. Facilities near this home include a fire station, a police station, and a hospital within 5.67km.

Mackenzie Richmond Hill Hospital

10 Trench St

Fire Station

101 Gamble Road

Police Station

100 Bloomington Road



SPECTACULAR ASPEN RIDGE FAMILY HOME IN PRIME RICHMOND HILL MACLEOD'S LANDING AREA

This Amazing Home Has One Of The Most Functional Layouts In Jefferson Area. The Home Has Such A Great Feeling From The Second You Drive Up, You Will The Love And Care That Has Been Put Into It From The Owners. The Open Concept Layout Greets You With A Large Foyer, Separate Entrance Into The Basement, Potlights Both Inside And Outside The Home, Custom Trim And Wainscoting, Featured Extended Floor To Ceiling Wall In The Family Room With Custom Tiles, Large Covered Balcony, Stone Walkway, Beautiful Large Deck Which Is Great For Entertaining, Electric Vehicle Charging Outlet And So Many More Unreal Features That Have To Been Seen In Person To Be Appreciated. The Neighbourhood Is One Of The Most Desirable In Richmond Hill. A Close Walk To Schools, Trails, Oak Ridges Moraine, Shopping, Restaurants, Parks, Public Transit, Golf Courses, Lake Wilcox And Bond Lake Are Just Around The Corner.

Extras:

All Existing Appliances: GE Stainless Steel Side-By-Side Fridge, Bosch Stainless Steel Built-In Dishwasher, GE Stainless Steel Gas Stove, Ancona Stainless Steel Hood Fan; Samsung Stainless Steel and Dryer, Marble Backsplash (2022), All Indoor and Outdoor Electrical Light Fixtures, All Window Coverings (Unless Excluded), Water Filtration System, Electrolux CVAC and All Attachments, Gas Fireplace, Electric Fireplace in Primary Bedroom, TV Mounts, A/C (2021), Humidifier (2020), Hepa Air Filter (as is), Electric Vehicle Charging Outlet, Ecobee Thermostat, Ring Doorbell, Shed, Garage Door Opener.

Rental: Hot Water Tank | Excluded: Dining Room Curtains, Freezer in Basement, Playground, Patio Furniture, TVs.

Lot Size: 36.09 ft x 88.58ft | Taxes: \$6,116.33 / 2022

Royal LePage Your Community Realty Brokerage does not warrant or guarantee the information in this feature sheet.