

1759 Autumn Crescent

www.1759Autumn.com



Your Community
REALTY
ROYAL LEPAGE
BROKERAGE INDEPENDENTLY OWNED & OPERATED

Sarah Norris
Sales Representative

TEAM **ZOLD**

Your Home • Your Life • Your Realtors

Working For You!

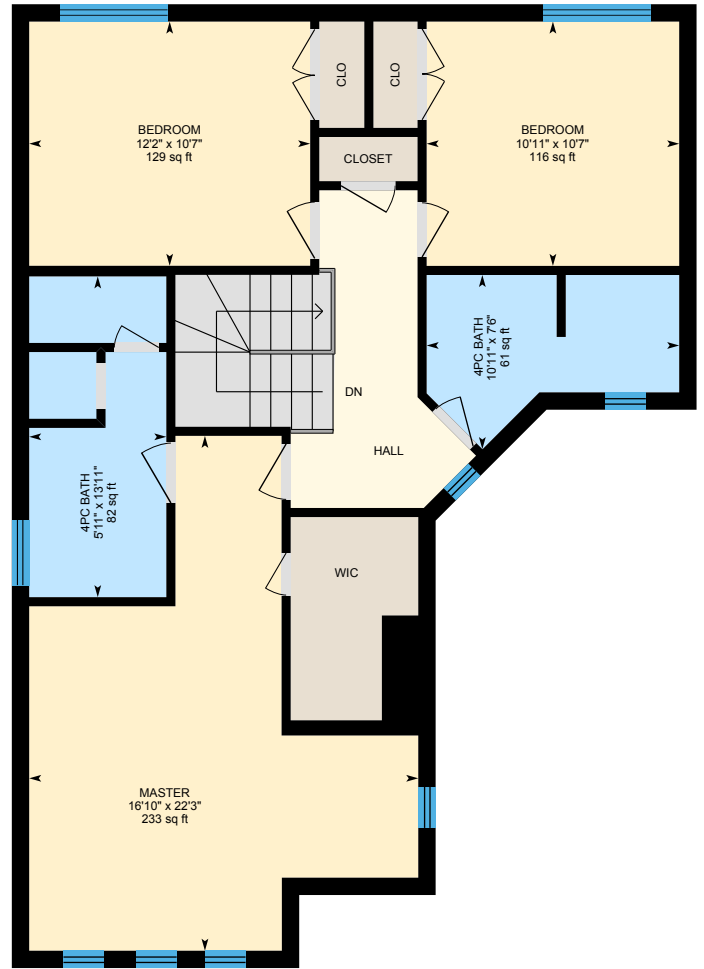
905.731.2000
www.teamzold.com



ROYAL LEPAGE
CHAIRMAN'S CLUB
NATIONAL TOP 1%
2012-2018



Shawn Zigelstein
Sales Representative





1759 Autumn Crescent, Pickering, ON L1V 6X2, Canada

SCHOOLS

With excellent assigned and local public schools very close to this home, your kids will get a great education in the neighbourhood.



Altona Forest PS

Designated Catchment School
Grades PK to 8
405 Woodsmere Crescent

Frenchman's Bay PS

Designated Catchment School
Grades PK to 8
920 Oklahoma Dr

Élém Ronald-Marion

Designated Catchment School
Grades PK to 8
2235 Brock Rd

Dunbarton HS

Designated Catchment School
Grades 9 to 12
655 Sheppard Ave

ÉS Ronald-Marion

Designated Catchment School
Grades 7 to 12
2235 Brock Rd

Other Local Schools

Ben Heppner Vocal Music Academy
Grades 4 to 8
80 Slan Ave

PARKS & REC.

This home is located in park heaven, with 4 parks and a long list of recreation facilities within a 20 minute walk from this address.



Amberlea Park

1797 Rosebank Rd



6 min

Altona Forest

Altona Rd



10 min

FACILITIES WITHIN A 20 MINUTE WALK

- 3 Playgrounds
- 5 Basketball Courts
- 1 Rink
- 3 Multi-Use Pads
- 4 Sports Fields
- 4 Ball Diamonds
- 1 Trail

TRANSIT

Public transit is at this home's doorstep for easy travel around the city. The nearest street transit stop is only a 3 minute walk away and the nearest rail transit stop is a 51 minute walk away.



Nearest Rail Transit Stop

Pickering GO



Nearest Street Level Transit Stop

Strouds Lane Eastbound
at Treetop Way



3 min

SAFETY

With safety facilities in the area, help is always close by. Facilities near this home include a fire station, a police station, and a hospital within 7.54km.

Scarborough Health Network - Centenary

2867 Ellesmere Rd

Fire Station

553 Kingston Road

Police Station

1710 Kingston Road

CONVENIENCE

This home is located near everyday amenities to make your daily errands easier.



Coffee



Gym



Grocery



Gas Station

Disclaimer: These materials have been prepared for shawn@eamonki.com and are not intended to solicit buyers or sellers currently under contract with a brokerage. By accessing this information you have agreed to our terms of service, which are hereby incorporated by reference. This information may contain errors and omissions. You are not permitted to rely on the contents of this information and must take steps to independently verify its contents with the appropriate authorities (school boards, governments etc.). As a recipient of this information, you agree not to hold us, our licensors or the owners of the information liable for any damages, howsoever caused.



FANTASTIC TRIBUTE BUILT HOME ON AN AMAZING LOT

This well loved and well-kept home has been lovingly maintained by the owner over the years, and is ready for you and your family to move in and enjoy. A great open concept layout, wonderful room sizes, and lots of updates including newer furnace, roof, windows, and so much more! A close walk to schools, parks, trails, public transit, and a very close commute to the GO Train and the 401.

A great place to call home.

Extras: Includes All Appliances (Fridge, Stove, Dishwasher, Hood Fan, Washer, Dryer, Basement Freezer), Electrical Light Fixtures, Pot Lights, Window Coverings, Hardwood Floors, Oak Staircase, 3-sided Gas Fireplace, Skylight, Central Vacuum, Alarm, Central Air Conditioning, Furnace, Garage Door Opener, Custom Landscaping And So Much More.

Lot Size: 36.73 x 150.44 ft. Taxes: \$6,085.87/2019

Royal LePage Your Community Realty Brokerage does not warrant or guarantee the information in this feature sheet.