

# 172 Tom Taylor Crescent

[www.172TomTaylor.com](http://www.172TomTaylor.com)



Your Community  
REALTY  
**ROYAL LEPAGE**  
BROKERAGE INDEPENDENTLY OWNED & OPERATED

**Marek Kloda**  
Broker

TEAM **ZOLD**

Your Home • Your Life • Your Realtors

*Working For You!*

905.731.2000  
[www.teamzold.com](http://www.teamzold.com)

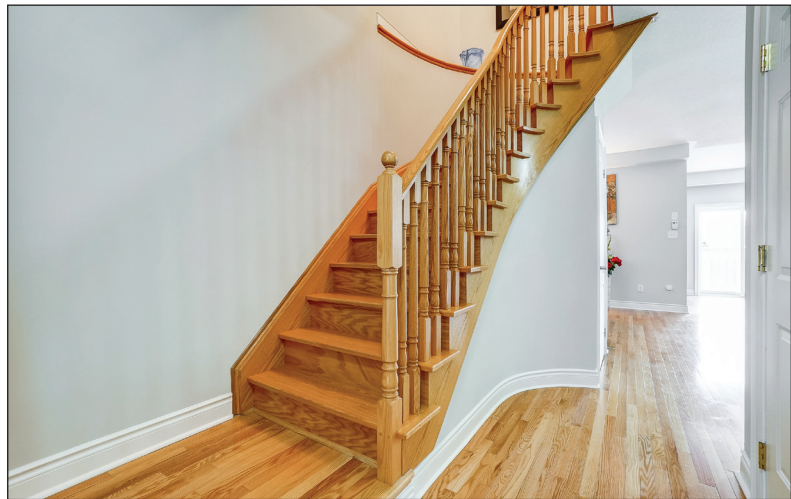
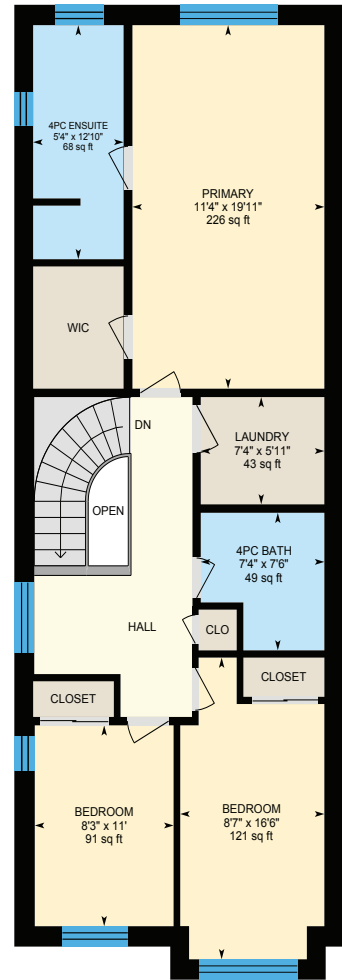
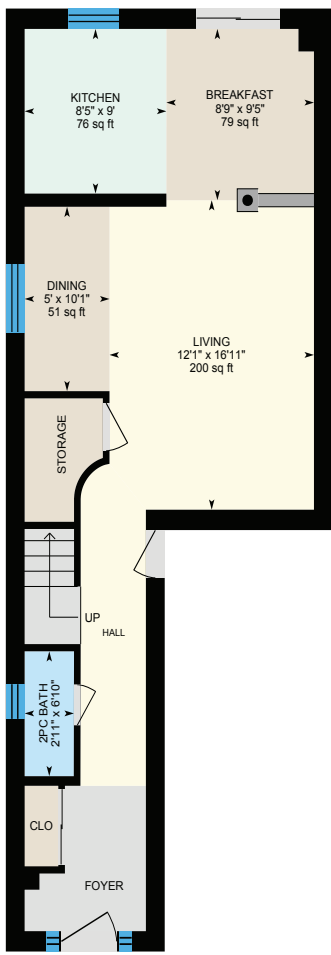


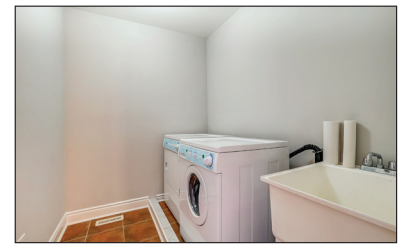
ROYAL LEPAGE  
**CHAIRMAN'S CLUB**  
NATIONAL TOP 1%  
2012-2020

**Shawn Zigelstein**  
Broker



# 172 Tom Taylor Crescent





**PUBLIC SCHOOLS**

Your neighbourhood is part of a community of Public Schools offering Elementary, Middle, and High School programming.

**Crossland PS**  
Designated Catchment School  
Grades PK to 8  
255 Brimson Dr

**Sir William Mulock SS**  
Designated Catchment School  
Grades 9 to 12  
705 Columbus Way

**Poplar Bank PS**  
Designated Catchment School  
Grades PK to 8  
400 Woodspring Ave

**És Norval-Morrisseau**  
Designated Catchment School  
Grades 7 to 12  
51 Wright St

**ALTERNATIVE & SPECIAL SCHOOLS**

Nearby alternative and special education schools include:

**The Lighthouse Learning and Development**  
Grades K to 12  
219 Old Yonge St

**The Lighthouse Learning and Development**  
Grades K to 12  
219 Old Yonge St



**CATHOLIC SCHOOLS**

Your neighbourhood is part of a community of Catholic Schools offering Elementary, Middle, and High School programming.

**St Paul Catholic ES**  
Grades PK to 8 (Assigned)  
140 William Roe Blvd

**ÉÉC Saint-Jean**  
Grades PK to 6 (Assigned)  
90 Walton Dr

**Sacred Heart Catholic HS**  
Grades 9 to 12 (Assigned)  
908 Lemar Rd

**ÉSC Renaissance**  
Grades 7 to 12 (Assigned)  
700 Bloomington Rd

**PRIVATE SCHOOLS**

The private schools nearest to you are:



**Country Garden Montessori Academy**  
Grades PK to 12  
601 Newpark Blvd

**Pickering College**  
Grades PK to 12  
16945 Bayview Ave

**Aurora Montessori School**  
Grades PK to 8  
330 Industrial Pkwy N

**St. Andrew's College**  
Grades 5 to 12  
15800 Yonge St

**PARKS & REC.**

This home is located in park heaven, with 4 parks and a long list of recreation facilities within a 20 minute walk from this address.



**George Luesby Park**  
375 Ritas Ave  
3 min



**Quaker Hill Park**  
443 Dixon Blvd  
9 min



**Ray Twinney Recreation Complex**  
100 Eagle Street West  
8 min



- FACILITIES WITHIN A 20 MINUTE WALK**
- 1 Pool
  - 5 Sports Fields
  - 2 Basketball Courts
  - 2 Rinks
  - 3 Trails
  - 3 Playgrounds
  - 6 Tennis Courts
  - 4 Ball Diamonds
  - 1 Community Centre
  - 1 Multi-Use Pad

**TRANSIT**

Public transit is at this home's doorstep for easy travel around the city. The nearest street transit stop is only a 4 minute walk away and the nearest rail transit stop is a 34 minute walk away.

**Nearest Rail Transit Stop**  
Newmarket GO

**Nearest Street Level Transit Stop**  
Eagle St Stop # 2049  
4 min



**SAFETY**

With safety facilities in the area, help is always close by. Facilities near this home include a fire station, a police station, and a hospital within 2.96km.

**Southlake Regional Health Centre**  
596 Davis Dr

**Fire Station**  
125 McCaffrey Rd

**Police Station**  
240 Prospect Street

**CONVENIENCE**

This home is located near everyday amenities to make your daily errands easier.

- Coffee
- Gym
- Grocery
- Gas Station



**\*\*\*SPECTACULAR 3 BEDROOM EXECUTIVE TOWNHOUSE END UNIT IN NEWMARKET\*\*\***

10+++ , Sunny With Great Layout, 9Ft Ceilings, Largest In The Subdivision. Hardwood Floors, Open Concept, Freshly Painted, Granite Counter, Stainless Steel Appliances, Custom Ceramic Tiles On Main, Entrance From The Garage. Close To Yonge, Hwy 404, 400 And Public Transit. Near Schools, Parks, Swimming/Ice Centre, Transit & York Office. Quiet Neighbourhood.

Extras: Stainless Steel Appliances (Built-In Flat Top Stove, Built-In Dishwasher, LG Fridge), Washer/Dryer, Garage Opener, CAC, Upgraded Light Fixtures And So Much More! Hot Water Tank (Rental).

Lot: 23.56 ft x 90.81 ft Taxes: \$3,966.48 Road Maintenance: \$93/month