

WELCOME TO

16 Sweet Water Crescent

www.16SweetWater.com



Shawn Zigelstein
Broker



ROYAL LEPAGE
CHAIRMAN'S CLUB
NATIONAL TOP 1%
LIFETIME MEMBER

TEAM ZOLD

Your Home • Your Life • Your Realtors

Working For You!

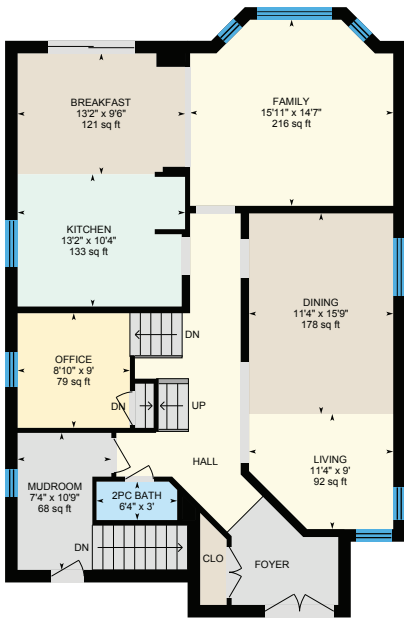
905.731.2000
www.teamzold.com

YOUR
Community[™]
REALTY

ROYAL LEPAGE

BROKERAGE INDEPENDENTLY OWNED & OPERATED

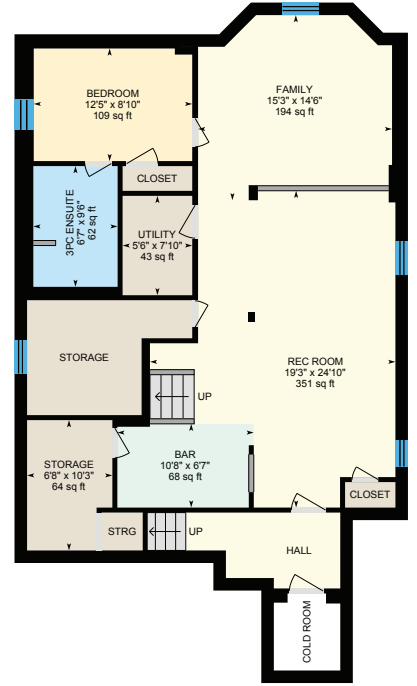
16 Sweet Water Crescent, Richmond Hill



Main Floor

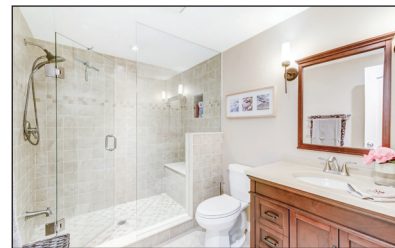
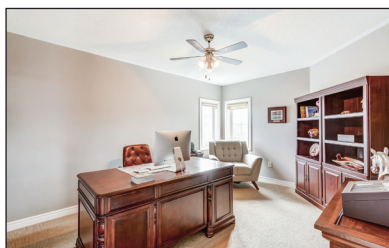


2nd Floor



Basement





PUBLIC SCHOOLS

Your neighbourhood is part of a community of Public Schools offering Elementary, Middle, and High School programming.

Silver Pines PS

Designated Catchment School
Grades PK to 8
112 Stave Crescent

Michaëlle Jean PS

Designated Catchment School
Grades 1 to 3
320 Shirley Dr

Richmond Hill HS

Designated Catchment School
Grades 9 to 12
201 Yorkland St

Beverly Acres PS

Designated Catchment School
Grades 4 to 8
283 Neal Dr

Académie de la Moraine

Designated Catchment School
Grades PK to 6
115 George St

ÉS Norval-Morrisseau

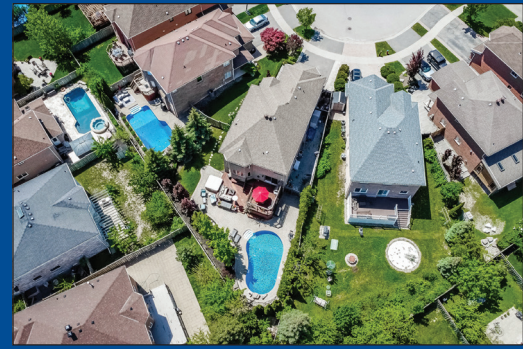
Designated Catchment School
Grades 7 to 12
51 Wright St

ALTERNATIVE & SPECIAL SCHOOLS

Nearby alternative and special education schools include:

YRDSB Continuing Education

Grades 9 to 12
11160 Yonge St



CATHOLIC SCHOOLS

Your neighbourhood is part of a community of Catholic Schools offering Elementary, Middle, and High School programming.

Father Henri Nouwen Catholic ES

Grades PK to 8 (Assigned)
121 Larratt Ln

ÉÉC Le-Petit-Prince

Grades PK to 6 (Assigned)
79 Avro Rd

St Theresa of Lisieux Catholic HS

Grades 9 to 12 (Assigned)
230 Shaftsbury Ave

ÉSC Renaissance

Grades 7 to 12 (Assigned)
700 Bloomington Rd

PRIVATE SCHOOLS

The private schools nearest to you are:



Century Private School

Grades PK to 12
11181 Yonge St

Alpha Star High School

Grades 9 to 12
10670 Yonge St

Richland Academy

Grades PK to 8
11570 Yonge St

TMS School - Elgin Mills

Grades 9 to 12
500 Elgin Mills Rd E

PARKS & REC.

This home is located in park heaven, with 4 parks and a long list of recreation facilities within a 20 minute walk from this address.



Larrat Lea Park

Springer Dr. and Canyon Creek Ave



3 min



Alias Grace Park

11 Courtney Cres



8 min



William Harrison Park

Aikenhead Ave and Colesbrook Rd



9 min



FACILITIES WITHIN A 20 MINUTE WALK

4 Playgrounds 1 Sports Field
5 Tennis Courts 3 Basketball Courts
1 Picnic Facilities 1 Multi-Use Pad



TRANSIT

Public transit is at this home's doorstep for easy travel around the city. The nearest street transit stop is only a 2 minute walk away and the nearest rail transit stop is a 45 minute walk away.



Nearest Rail Transit Stop

Richmond Hill GO



Nearest Street Level Transit Stop

Shaftsbury Av / Brookside Rd



2 min

SAFETY

With safety facilities in the area, help is always close by. Facilities near this home include a fire station, a hospital, and a police station within 3.15km.



Mackenzie Richmond Hill Hospital

10 Trench St



Fire Station

101 Gamble Road



Police Station

171 Major Mackenzie Drive West

CONVENIENCE

This home is located near everyday amenities to make your daily errands easier.



Coffee



Gym



Grocery



Gas Station



HoodQ

Disclaimer: These materials have been prepared for shawn@hoodq.com and are not intended to solicit buyers or sellers currently under contract with a brokerage. By accessing this information you have agreed to our terms of service, which are hereby incorporated by reference. This information may contain errors and omissions. You are not permitted to rely on the contents of this information and must take steps to independently verify its contents with the appropriate authorities (school boards, governments etc.). As a recipient of this information, you agree not to hold us, our licensors or the owners of the information liable for any damages, howsoever caused.

SPECTACULAR FULLY RENOVATED WESTBROOK BEAUTY WITH RESORT LIKE BACKYARD

Wait Till You See This Beautiful Home, You Will Fall In Love. One Of The Largest Lots In The Area, The Yard Feels Like Your Own Private Paradise With Two-Tiered Deck, Hot Tub, And Inground Salt Water Pool. Tons Of Room For Entertaining Both Inside And Out. The Gourmet Kitchen, Floors, Staircase, Washrooms, Basement, Windows and Doors, Roof, Garage Doors And So Much More Have All Been Meticulously Renovated And All You Need To Do Is Pack Your Bags And Call The Movers. For Those Who Work At Home, There Is A Main Floor Office Area With Tons Of Natural Light To Brighten Up Your Day. This High Demand Area Speaks For Itself, Walking Trails Close By, Parks, Top Rated Schools (Richmond Hill High, Silver Pines, St Theresa, Father Henri, Private Schools, Community Center, Shopping, Restaurants And A Quick Drive To Major Highways And Go Train For Easy Commuting.

Irregular Lot: 29.72 x 156.77 Feet | Taxes: \$7894.80/2021

Royal LePage Your Community Realty Brokerage does not warrant or guarantee the information in this feature sheet.