

WELCOME TO

# 16 Bri Way

[www.16briway.com](http://www.16briway.com)



**Shawn Zigelstein**  
Broker



ROYAL LEPAGE  
**CHAIRMAN'S CLUB**  
NATIONAL TOP 1%  
LIFETIME MEMBER

## TEAM ZOLD

Your Home • Your Life • Your Realtors

*Working For You!*

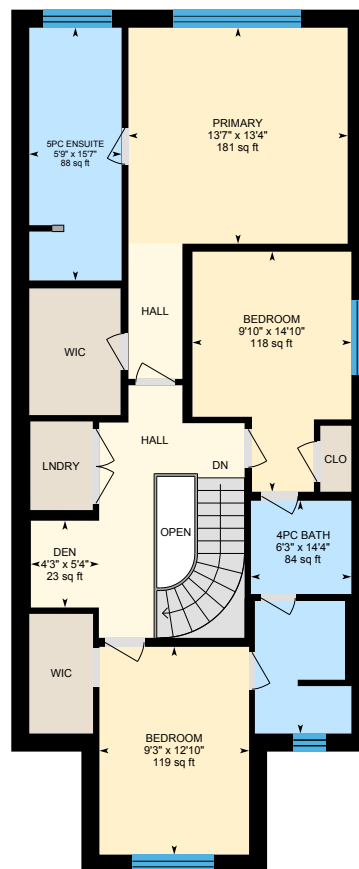
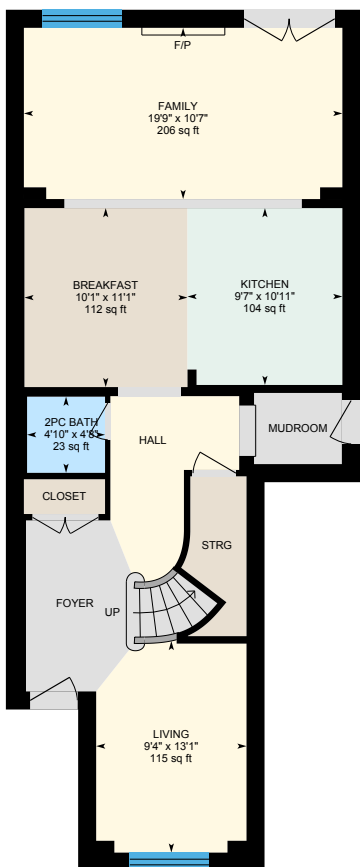
905.731.2000  
[www.teamzold.com](http://www.teamzold.com)

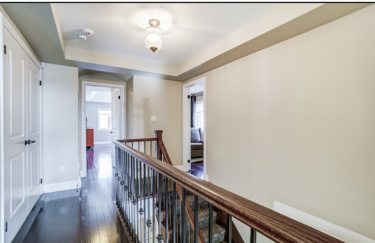
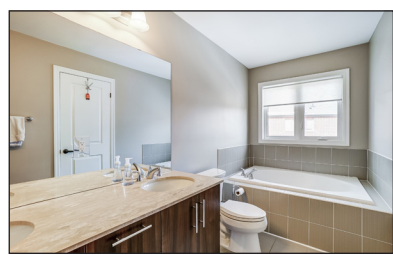
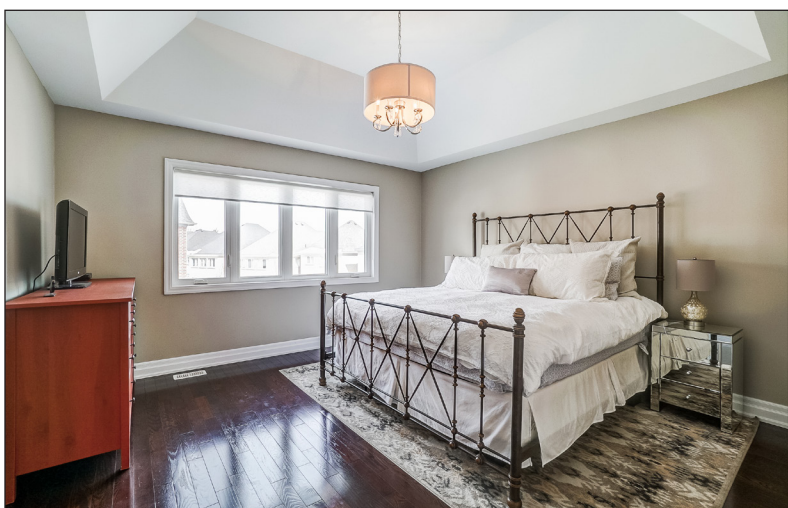
YOUR  
**Community**<sup>™</sup>  
REALTY

**ROYAL LEPAGE**

BROKERAGE INDEPENDENTLY OWNED & OPERATED

# 16 Bri Way, King City





## PUBLIC SCHOOLS

Your neighbourhood is part of a community of Public Schools offering Elementary, Middle, and High School programming.

### King City PS

Designated Catchment School  
Grades PK to 8  
25 King Blvd

### ÉE La Fontaine

Designated Catchment School  
Grades PK to 6  
10110 Islington Ave

### ÉS Norval-Morrisseau

Designated Catchment School  
Grades 7 to 12  
51 Wright St

### Beynon Fields PS

Designated Catchment School  
Grades 1 to 8  
258 Selwyn Rd

### King City SS

Designated Catchment School  
Grades 9 to 12  
2001 King Rd

## ALTERNATIVE & SPECIAL SCHOOLS

Nearby alternative and special education schools include:

### Dr. Bette Stephenson Centre for Learning

Grades 9 to 12, Adult  
36 Regatta Ave



## CATHOLIC SCHOOLS

Your neighbourhood is part of a community of Catholic Schools offering Elementary, Middle, and High School programming.

### Holy Name Catholic ES

Grades PK to 8 (Assigned)  
65 Spring Hill Drive

### St. Joseph Catholic ES

Grades 1 to 8 (Assigned)  
2 Glass Dr

### ÉEC Le-Petit-Prince

Grades PK to 6 (Assigned)  
79 Avro Rd

### ÉSC Renaissance

Grades 7 to 12 (Assigned)  
700 Bloomington Rd

## PRIVATE SCHOOLS

The private schools nearest to you are:



### The Country Day School

Grades K to 12  
13415 Dufferin St

### Academy for Gifted Children (PACE)

Grades K to 12  
12 Bond Crescent

### Eureka Montessori

Grades PK to 3  
13345 Yonge St

### Roots Private School

Grades PK to 6  
10195 Keele St



## PARKS & REC.

This home is located in park heaven, with 4 parks and a long list of recreation facilities within a 20 minute walk from this address.



### Kettle Lake Park

50 Langdon Drive



4 min

### King City Community Centre / Arena / Memorial Park

25 Doctors Ln



10 min

### Wellesley Park

2330 King Road



7 min

### FACILITIES WITHIN A 20 MINUTE WALK

- 4 Playgrounds
- 4 Tennis Courts
- 2 Ball Diamonds
- 1 Arena
- 1 Skateboard Park
- 1 Multi-Use Pad
- 6 Sports Fields
- 1 Basketball Court
- 2 Rinks
- 1 Community Centre
- 1 Trail



## TRANSIT

Public transit is at this home's doorstep for easy travel around the city. The nearest street transit stop is only a 8 minute walk away and the nearest rail transit stop is a 12 minute walk away.

### Nearest Rail Transit Stop

King City GO



12 min

### Nearest Street Level Transit Stop

Keele St / King Rd



8 min

## SAFETY

With safety facilities in the area, help is always close by. Facilities near this home include a fire station, a police station, and a hospital within 8.6km.

### Cortellucci Vaughan Hospital

3200 Major MacKenzie Dr W

### Fire Station

2045 King Rd

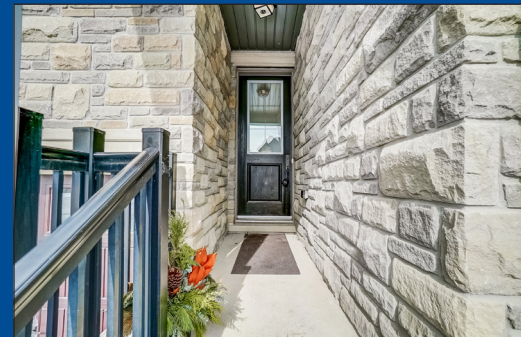
### Police Station

100 Bloomington Road

## CONVENIENCE

This home is located near everyday amenities to make your daily errands easier.

- Coffee
- Gym
- Grocery
- Gas Station



## HoodQ

Disclaimer: These materials have been prepared for shawn@teamzold.com and are not intended to solicit buyers or sellers currently under contract with a brokerage. By accessing this information you have agreed to our terms of service, which are hereby incorporated by reference. This information may contain errors and omissions. You are not permitted to rely on the contents of this information and must take steps to independently verify its contents with the appropriate authorities (school boards, governments etc.). As a recipient of this information, you agree not to hold us, our licensors or the owners of the information liable for any damages, howsoever caused.

## \*\*\*KING CITY ROYAL COLLECTION STUNNING LINKED TOWNHOME\*\*\*

Attached At The Garage, This 3 Bedroom Plus Loft Has To Be Seen To Be Appreciated. Tons Of Upgrades Throughout Including A Gourmet Kitchen, Hardwood Floors, Pot Lights, Circular Oak Staircase With Wrought Iron Pickets, Custom Deck, Basement With 9 Foot Ceilings And Large Window, And So Much More! Close To Amazing Schools, Parks, Trails, Go Train, Hwy 400, And Some Amazing Local Restaurants And Stores.

### Extras:

Kitchen Aid Stainless Steel French Door Fridge, LG Stainless Steel Built In Dishwasher, Brand New Maytag Stainless Steel Flat Top Stove with True Convection Oven, Built in Hood Fan, LG Grey Washer and Dryer, Alarm System, Garage Door Opener and 1 Remote, Central Vac And Attachments, Gas Fireplace, 200 Amp Service, Furnace, A/C, Humidifier, HVAC System, Awning, Gas Line For BBQ, Gas Line For The Oven.

Hot Water Tank (Rental)

Lot: 25.00 ft x 109.65ft | Taxes: \$6,049.26/2022

Royal LePage Your Community Realty Brokerage does not warrant or guarantee the information in this feature sheet.