

WELCOME TO

16 Aspenview Drive

www.16Aspenview.com



Shawn Zigelstein
Broker



ROYAL LEPAGE
CHAIRMAN'S CLUB
NATIONAL TOP 1%
LIFETIME MEMBER

TEAM **ZOLD**

Your Home • Your Life • Your Realtors

Working For You!

905.731.2000
www.teamzold.com

YOUR **Community**[™]
REALTY

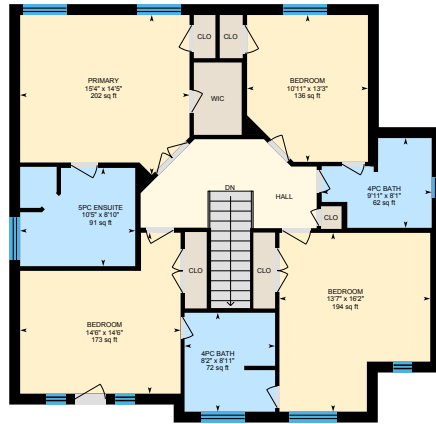
ROYAL LEPAGE

BROKERAGE INDEPENDENTLY OWNED & OPERATED

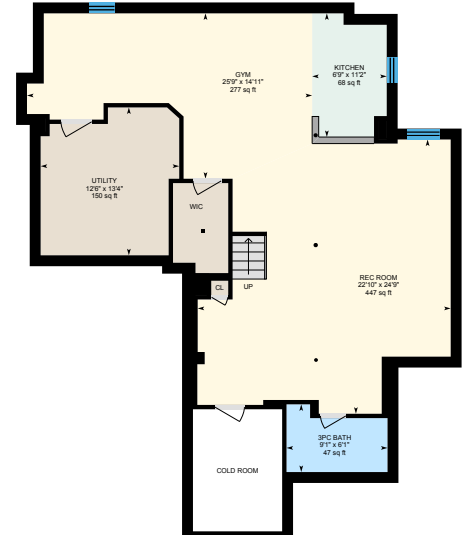
16 Aspenview Drive, Richmond Hill



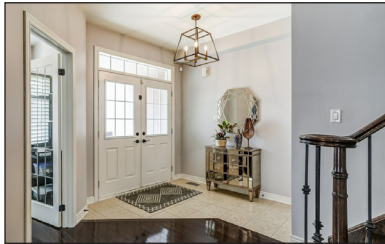
1st Floor

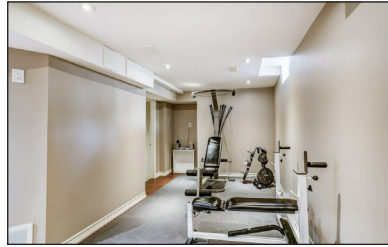
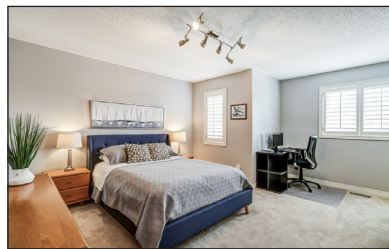
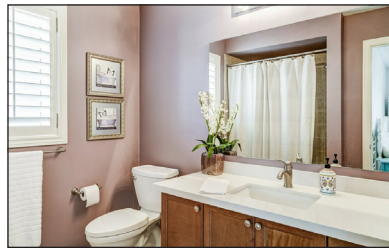
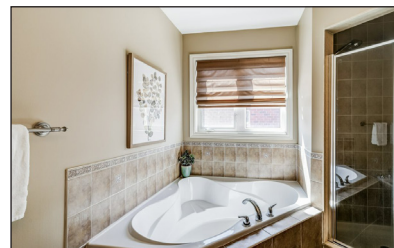
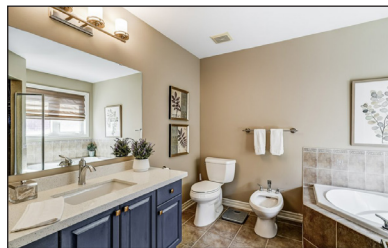


2nd Floor



Basement (Below Grade)





PUBLIC SCHOOLS

Your neighbourhood is part of a community of Public Schools offering Elementary, Middle, and High School programming.

MacLeod's Landing PS

Designated Catchment School
Grades PK to 8
195 Silver Maple Rd

Académie de la Moraine

Designated Catchment School
Grades PK to 6
115 George St

ÉS Norval-Morrisseau

Designated Catchment School
Grades 7 to 12
51 Wright St

Beynon Fields PS

Designated Catchment School
Grades 1 to 8
258 Selwyn Rd

King City SS

Designated Catchment School
Grades 9 to 12
2001 King Rd

ALTERNATIVE & SPECIAL SCHOOLS

Nearby alternative and special education schools include:

YRDSB Continuing Education

Grades 9 to 12
11160 Yonge St

Dr. Bette Stephenson Centre for Learning

Grades 9 to 12, Adult
36 Regatta Ave



CATHOLIC SCHOOLS

Your neighbourhood is part of a community of Catholic Schools offering Elementary, Middle, and High School programming.

Father Frederick McGinn Catholic ES

Grades PK to 8
61 Brockdale St

ÉÉC Le-Petit-Prince

Grades PK to 6
79 Avro Rd

Cardinal Carter Catholic SS

Grades 9 to 12
210 Old Bloomington Rd

ÉSC Renaissance

Grades 7 to 12
700 Bloomington Rd

PRIVATE SCHOOLS

The private schools nearest to you are:



Richland Academy

Grades PK to 8
11570 Yonge St

Academy for Gifted Children (PACE)

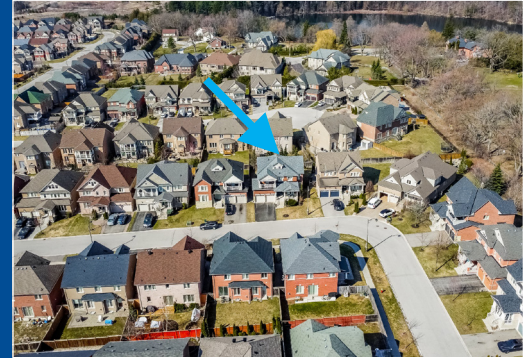
Grades K to 12
12 Bond Crescent

Century Private School

Grades PK to 12
11181 Yonge St

Holy Trinity Private School

Grades PK to 12
11300 Bayview Ave



PARKS & REC.

This home is located in park heaven, with 4 parks and a long list of recreation facilities within a 20 minute walk from this address.



MacLeod's Landing Park
195 Silver Maple Rd
 4 mins

Philips Ridge Park
40 Mansard Drive
 13 mins

Autumn Grove Park
Tower Hill Rd. and Mockingbird Dr.
 13 mins

FACILITIES WITHIN A 20 MINUTE WALK

4 Playgrounds 2 Sports Fields
4 Tennis Courts 1 Sports Court
3 Basketball Courts 2 Trails



TRANSIT

Public transit is at this home's doorstep for easy travel around the city. The nearest street transit stop is only a minute walk away and the nearest rail transit stop is a 27 minute walk away.

Nearest Rail Transit Stop
Aurora GO

Nearest Street Level Transit Stop
Conover Av / Brooks Av



< 1 min

SAFETY

With safety facilities in the area, help is always close by. Facilities near this home include a fire station, a police station, and a hospital within 5.26km.

Southlake Regional Health Centre
596 Davis Dr

Fire Station
1344 Wellington St E

Police Station
240 Prospect Street



Disclaimer: These materials have been prepared for shawn@teamzold.com and are not intended to solicit buyers or sellers currently under contract with a brokerage. By accessing this information you have agreed to our terms of service, which are hereby incorporated by reference. This information may contain errors and omissions. You are not permitted to rely on the contents of this information and must take steps to independently verify its contents with the appropriate authorities (school boards, governments etc.). As a recipient of this information, you agree not to hold us, our licensors or the owners of the information liable for any damages, howsoever caused.

WELCOME HOME TO MACLEOD'S LANDING

This Wonderfully Updated Home Is Located On A Nice Quiet Street With A Great Pie Shaped Lot. As Soon As You See The Front Of The House You Will Fall In Love. The Curb Appeal And Design Of This Aspen Ridge Home Is Spectacular, And The Pie Shape Lot Gives You A Great Yard To Enjoy The Upcoming Summer In. The Home Has So Many Amazing Features And Upgrades. Hardwood Floors, Pot Lights, Upgraded Lights, Custom Window Coverings, Professionally Finished Basement With Second Kitchen And Bathroom, 3 Full Baths On The Second Floor, And Other Amazing Custom Finishes Throughout The Home. The Area Is Second To None - Amazing Schools, Walking Paths Through The Oak Ridges Moraine, Parks, Public Transit Right Around The Corner, Shopping And Restaurants Close By And Tons Of Other Great Amenities. Book Your Visit Today And Come Make This Lovely Place Your Very Own, Just Move Right In, Nothing Else For You To Do!

Included: All Existing Appliances: Kitchen Aid Stainless Steel Fridge, Kitchen Aid Stainless Steel Gas Stove, Vesta Stainless Steel Hood Fan, Whirlpool Stainless Steel Built-In Dishwasher; Basement Appliances: Whirlpool Stainless Steel Built-In Wall Oven, Beaumark White Fridge; Whirlpool Duet Red Washer and Dryer, All Electrical Light Fixtures, All Window Coverings, Oak Staircase, Wrought Iron Pickets, Fireplace, AC, HVAC, Humidifier, Central Vac and attachments, Firepit, Gas Line for BBQ, Garage Door Opener, Nest Thermostat, Outside Camera, Alarm System

Lot: 48.45 ft x 89.97 ft | Taxes: \$6,679.67/2022