

# 164 Tom Taylor Crescent

[www.164TomTaylor.com](http://www.164TomTaylor.com)



YOUR  
Community  
REALTY  
**ROYAL LEPAGE**  
BROKERAGE INDEPENDENTLY OWNED & OPERATED

**Marek Kloda**  
Sales Representative

TEAM **ZOLD**

Your Home • Your Life • Your Realtors

*Working For You!*

**905.731.2000**  
[www.teamzold.com](http://www.teamzold.com)



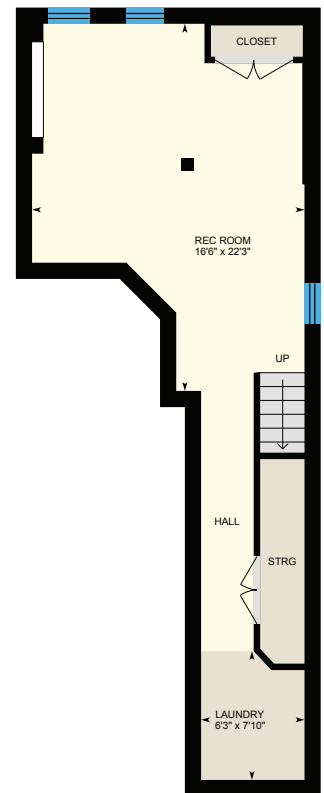
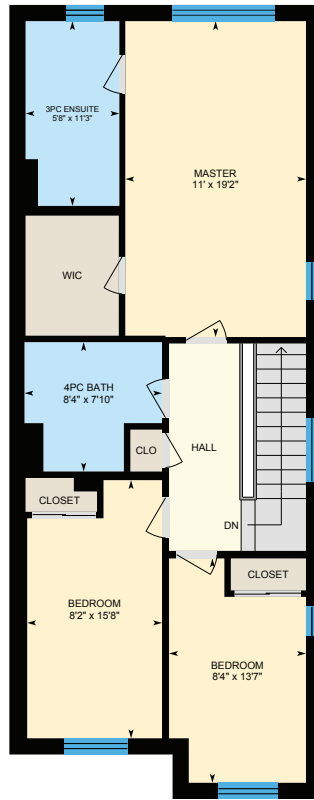
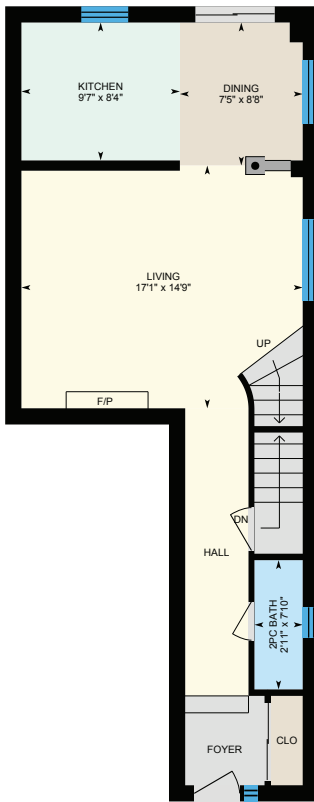
ROYAL LEPAGE  
**CHAIRMAN'S CLUB**  
NATIONAL  
TOP 1%  
2012-2019

**Shawn Zigelstein**  
Broker

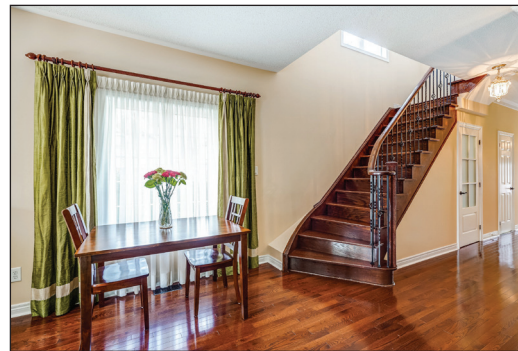




# 164 Tom Taylor Crescent, Newmarket, ON









## PUBLIC SCHOOLS

Your neighbourhood is part of a community of Public Schools offering Elementary, Middle, and High School programming.

### Crossland PS

Designated Catchment School  
Grades PK to 8  
255 Brimston Dr

### Poplar Bank PS

Designated Catchment School  
Grades PK to 8  
400 Woodspring Ave

### Académie de la Moraine

Designated Catchment School  
Grades PK to 6  
115 George St

### Sir William Mulock SS

Designated Catchment School  
Grades 9 to 12  
705 Columbus Way

### És Norval-Morrisseau

Designated Catchment School  
Grades 7 to 12  
51 Wright St

## ALTERNATIVE & SPECIAL SCHOOLS

Nearby alternative and special education schools include:

### The Lighthouse Learning and Development

Grades K to 12  
219 Old Yonge St

### The Lighthouse Learning and Development

Grades K to 12  
219 Old Yonge St

## CATHOLIC SCHOOLS

Your neighbourhood is part of a community of Catholic Schools offering Elementary, Middle, and High School programming.

### St Paul Catholic ES

Grades PK to 8 (Assigned)  
140 William Roe Blvd

### ÉEC Saint-Jean

Grades PK to 6 (Assigned)  
90 Walton Dr

### Sacred Heart Catholic HS

Grades 9 to 12 (Assigned)  
908 Lemar Rd

### ESC Renaissance

Grades 7 to 12 (Assigned)  
700 Bloomington Rd

## PRIVATE SCHOOLS

The private schools nearest to you are:



### Pickering College

Grades PK to 12  
16945 Bayview Ave

### Country Garden Montessori Academy

Grades PK to 12  
601 Newpark Blvd

### Aurora Montessori School

Grades PK to 8  
330 Industrial Pkwy N

### St. Andrew's College

Grades 5 to 12  
15800 Yonge St

## PARKS & REC.

This home is located in park heaven, with 4 parks and a long list of recreation facilities within a 20 minute walk from this address.



### George Luesby Park

375 Ritas Ave



3 min

### Ray Twinney Recreation Complex

100 Eagle Street West



8 min

### Quaker Hill Park

443 Dixon Blvd



9 min

### FACILITIES WITHIN A 20 MINUTE WALK

- 1 Pool
- 5 Sports Fields
- 2 Basketball Courts
- 2 Rinks
- 3 Trails
- 3 Playgrounds
- 6 Tennis Courts
- 4 Ball Diamonds
- 1 Community Centre
- 1 Multi-Use Pad

## TRANSIT

Public transit is at this home's doorstep for easy travel around the city. The nearest street transit stop is only a 3 minute walk away and the nearest rail transit stop is a 34 minute walk away.



### Nearest Rail Transit Stop

Newmarket GO



### Nearest Street Level Transit Stop

Eagle St Stop # 2049



3 min

## SAFETY

With safety facilities in the area, help is always close by. Facilities near this home include a fire station, a police station, and a hospital within 2.94km.



### Southlake Regional Health Centre

596 Davis Dr



### Fire Station

125 McCaffrey Rd



### Police Station

240 Prospect Street

## CONVENIENCE

This home is located near everyday amenities to make your daily errands easier.



### Coffee



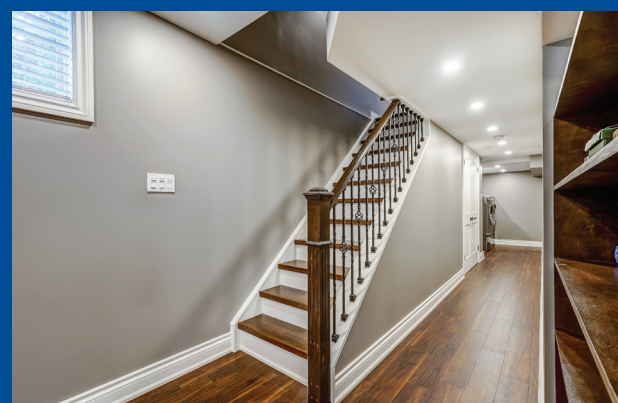
### Gym



### Grocery



### Gas Station



HoodQ

Disclaimer: These materials have been prepared for ycmarketing@yahoo.com and are not intended to solicit buyers or sellers currently under contract with a brokerage. By accessing this information you have agreed to our terms of service, which are hereby incorporated by reference. This information may contain errors and omissions. You are not permitted to rely on the contents of this information and must take steps to independently verify its contents with the appropriate authorities (school boards, governments etc.). As a recipient of this information, you agree not to hold us, our licensors or the owners of the information liable for any damages, however caused.

\*\*\*LARGE, EXECUTIVE END UNIT TOWNHOME IN SUMMERHILL ESTATES!\*\*\*

Corner Lot, No Neighbours Behind! Over \$140K In Upgrades! 9' Ceilings, Crown Mouldings, Camera System, Gas Fireplace, Dream Kitchen With Stainless Steel Appliances, Extended Cabinets, Oak Stairs With Iron Spindles, Hardwood Throughout, Large Thermal Glazed Windows, Huge Master Bedroom With Walk-In Closet & New Ensuite With Glass Shower And Quartz Counter, Washlet Toilet, New Furnace (2015), Finished Basement With 65"Sony/Sonos Entertainment System And So Much More!!!

EXTRAS: Upgraded Light Fixtures, All Window Coverings Stainless Steel Appliances: Built In Flat Top Stove, Built In Dishwasher, Fridge, Front Load Washer/Dryer, Custom Ceramic Tiles, Interlock Landscaping, Cac, Upgraded Light Fixtures. Exclusions: HWT (Rental).

Lot Size: 26.94 Ft Irr x 90.81 Ft Irregular

Road Maintenance Fee: \$85/mth

Taxes: \$3.816/2020

Royal LePage Your Community Realty Brokerage does not warrant or guarantee the information in this feature sheet.