

1602 Baggins Street

www.1602Baggins.com



Shawn Zigelstein
Broker



ROYAL LEPAGE
CHAIRMAN'S CLUB
NATIONAL TOP 1%
2012-2019

TEAM **ZOLD**

Your Home • Your Life • Your Realtors

Working For You!

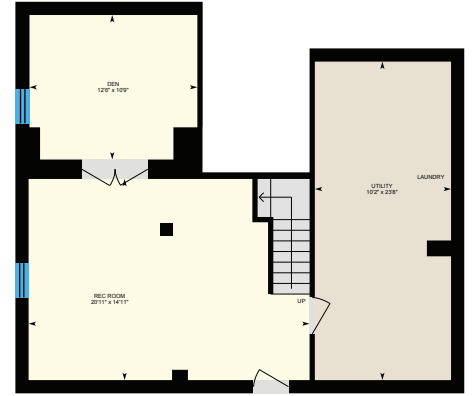
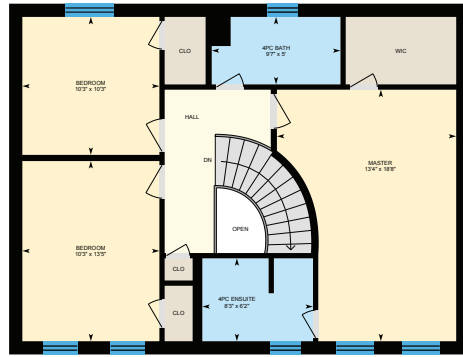
905.731.2000
www.teamzold.com

Your Community[™]
REALTY
ROYAL LEPAGE
BROKERAGE INDEPENDENTLY OWNED & OPERATED

Vanessa Oliveira
Sales Representative



1602 Baggins Street





1602 Baggins Street

PUBLIC SCHOOLS

Your neighbourhood is part of a community of Public Schools offering Elementary, Middle, and High School programming.

Valley Farm PS

Designated Catchment School
Grades PK to 8
1615 Pepperwood Gate

És Ronald-Marion

Designated Catchment School
Grades 7 to 12
2235 Brock Rd

É Élé Ronald-Marion

Designated Catchment School
Grades PK to 8
2235 Brock Rd

Pine Ridge SS

Designated Catchment School
Grades 9 to 12
2155 Liverpool Rd

ALTERNATIVE & SPECIAL SCHOOLS

Nearby alternative and special education schools include:

Father Donald MacLellan Catholic Secondary

Grades 9 to 12
458 Fairall St

Exceptional Learning Centre

Grades K to 8
520 Westney Rd S

CATHOLIC SCHOOLS

Your neighbourhood is part of a community of Catholic Schools offering Elementary, Middle, and High School programming.

St. Wilfrid Catholic School

Grades PK to 8 (Assigned)
2360 Southcott Rd

ÉÉC Notre-Dame-de-la-Jeunesse-Ajax

Grades PK to 6 (Assigned)
71 Ritchie Ave

St. Mary Catholic Secondary School

Grades 9 to 12 (Assigned)
1918 whites Rd

ÉSC Saint-Charles-Garnier

Grades 7 to 12 (Assigned)
4101 Baldwin St S

PRIVATE SCHOOLS

The private schools nearest to you are:



Brock Elementary School

Grades PK to 8
2065 Brock Rd

Harwood Montessori School

Grades Ungraded
23 Church St S

Crawford Adventist Academy (East Campus)

Grades PK to 8
1765 Meadowview Ave

Brackendale Montessori

Grades PK to K, Ungraded
1485 Harwood Ave N

PARKS & REC.

This home is located in park heaven, with 4 parks and a long list of recreation facilities within a 20 minute walk from this address.



Centennial Park

2251 Brock Rd



3 min

Southcott Park

2344 Southcott Rd



5 min

Clearside Park

2257 Brock Rd



5 min

FACILITIES WITHIN A 20 MINUTE WALK

- 4 Playgrounds
- 5 Ball Diamonds
- 2 Multi-Use Pads
- 2 Sports Fields
- 1 Lawn Bowling/Bocce

TRANSIT

Public transit is at this home's doorstep for easy travel around the city. The nearest street transit stop is only a 2 minute walk away and the nearest rail transit stop is a 46 minute walk away.

Nearest Rail Transit Stop
Pickering GO

Nearest Street Level Transit Stop
Dellbrook Westbound at Blue Ridge (East Stop) 2 min

SAFETY

With safety facilities in the area, help is always close by. Facilities near this home include a police station, a fire station, and a hospital within 6.16km.

Lakeridge Health - Ajax Pickering Hospital
580 Harwood Ave S

Fire Station
1115 Finch Avenue

Police Station
1710 Kingston Rd

CONVENIENCE

This home is located near everyday amenities to make your daily errands easier.

- Coffee
- Gym
- Grocery
- Gas Station



HoodQ

Disclaimer: These materials have been prepared for youmarketing@hoodq.com and are not intended to solicit buyers or sellers currently under contract with a brokerage. By accessing this information you have agreed to our terms of service, which are hereby incorporated by reference. This information may contain errors and omissions. You are not permitted to rely on the contents of this information and must take steps to independently verify its contents with the appropriate authorities (school boards, governments etc.). As a recipient of this information, you agree not to hold us, our licensors or the owners of the information liable for any damages, however caused.

*****Amazing Well Maintained Family Home With Private Yard*****

Beautiful Family Home Located In A Quiet Neighbourhood Near The Seaton Hiking Trail. Bright Eat-In Kitchen Walkout To Deck And Private Yard. Open Concept Spacious Living Room With Large Bay Window. Upgraded Main Floor With Hardwood Flooring Throughout, Renovated Bathroom. Family Room Complete With Wood Burning Fireplace. Finished Basement With A Spacious Rec Room And 4th Bedroom. Huge Master Bedroom With 4 Pc Ensuite, Walk-In Closet, Freshly Painted, New Front Door, Some New Windows And Much More! Close To Great Schools And Parks, Go Station, Pickering Town Centre, Community Centre. Immaculate And Professionally Landscaped Property. This Area Is Perfect For Young Families

Extras: All Window Coverings, All Electric Light Fixtures, All Existing Appliances: Kenmore White Fridge, GE Flat Top White Stove, Broan Range, Kenmore White Dishwasher, Whirlpool White Dryer, Kenmore Grey Washer, Kenmore White Dryer, Enercare Smart Thermostat, Furnace, Humidifier, A/C, Central Vac & All Attachments, Garage Door Opener And Remotes, Hot Water Tank (Rental).

Lot Size: 41.14 Ft x 103.41 Ft ~ Property Taxes: \$5,018.22/2019

Royal LePage Your Community Realty does not warrant or guarantee the information on this feature sheet.