

WELCOME TO

*155 Legion Rd N*

SUITE 1310



ROYAL LEPAGE  
**CHAIRMAN'S CLUB**  
NATIONAL  
TOP 1%  
2012-2020

**Shawn Zigelstein**  
Broker

TEAM **ZOLD**

Your Home • Your Life • Your Realtors

*Working For You!*

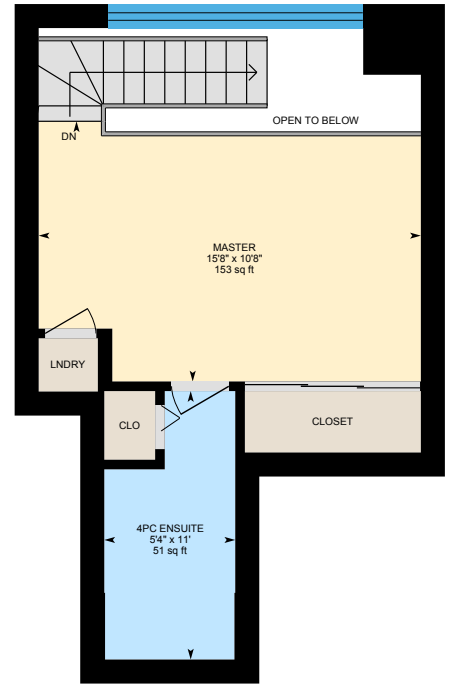
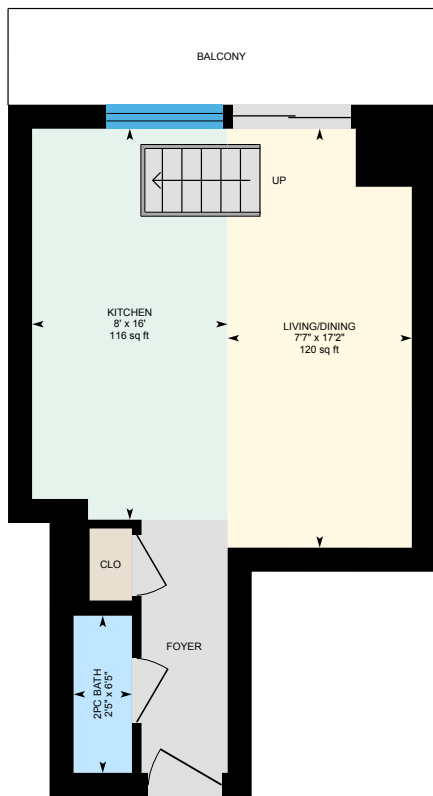
**905.731.2000**  
**www.teamzold.com**

YOUR  
**Community**  
REALTY™

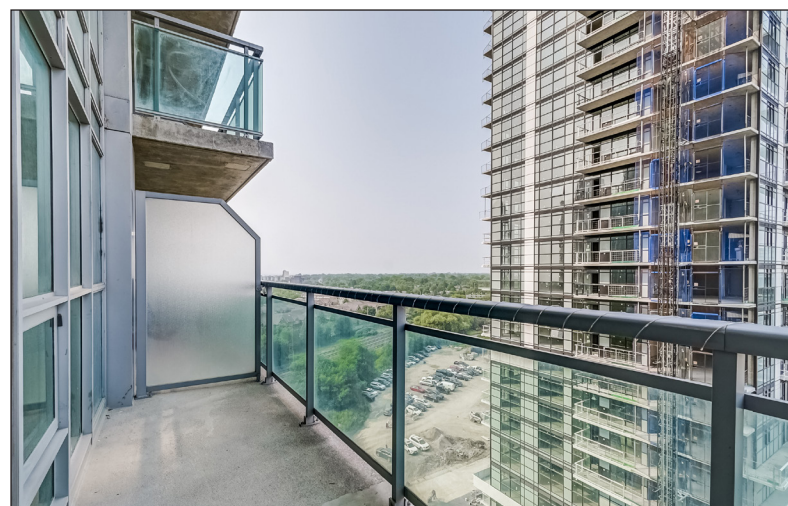


BROKERAGE INDEPENDENTLY OWNED & OPERATED











## PARKS & REC.

This home is located in park heaven, with 4 parks and a long list of recreation facilities within a 20 minute walk from this address.



### Grand Avenue Park

1 Grand Ave



2 min

### Dalesford Park

95 Grand Ave



4 min

### Manchester Park

75 Manchester St



4 min

### FACILITIES WITHIN A 20 MINUTE WALK

5 Playgrounds  
3 Tennis Courts  
1 Trail

2 Sports Fields  
1 Ball Diamond  
1 Multi-Use Pad

## TRANSIT

Public transit is at this home's doorstep for easy travel around the city. The nearest street transit stop is only a 4 minute walk away and the nearest rail transit stop is a 14 minute walk away.

**Nearest Rail Transit Stop**  
Mimico GO



14 min

**Nearest Street Level Transit Stop**  
Park Lawn Rd At Gardiner Expressway (WB On Ramp)



4 min

## SAFETY

With safety facilities in the area, help is always close by. Facilities near this home include a fire station, a hospital, and a police station within 3.89km.

**St Joseph's Health Centre**  
30 The Queensway

**Fire Station**  
615 Royal York Rd

**Police Station**  
3699 Bloor St W

## CONVENIENCE

This home is located near everyday amenities to make your daily errands easier.



Coffee



Gym



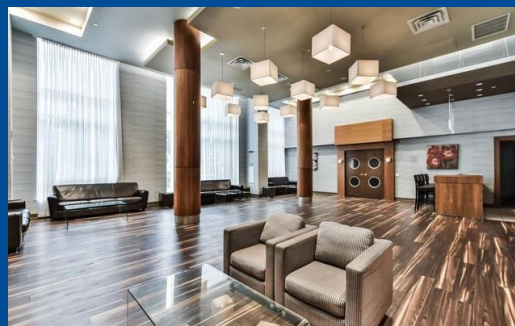
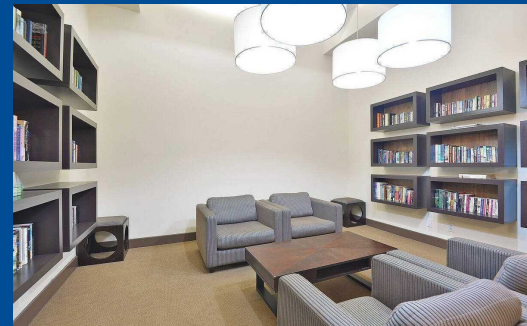
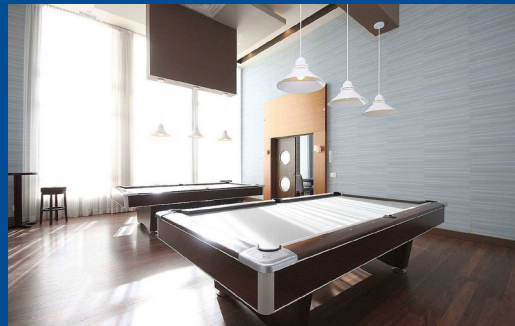
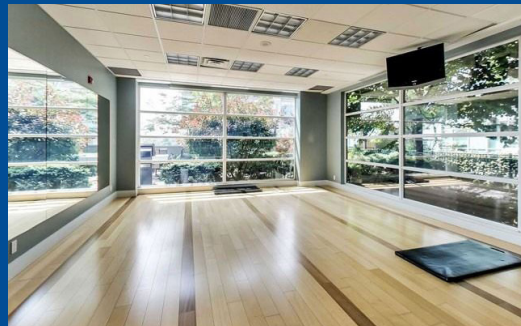
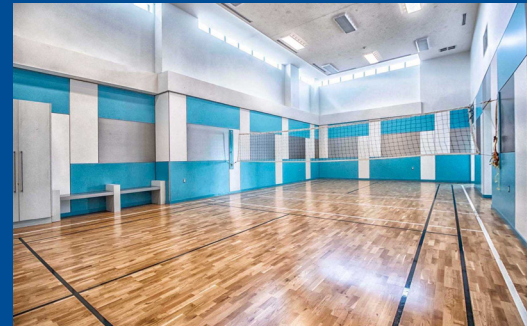
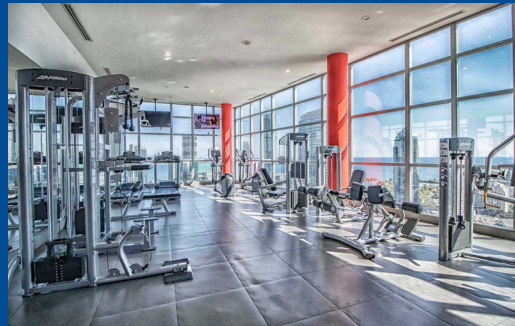
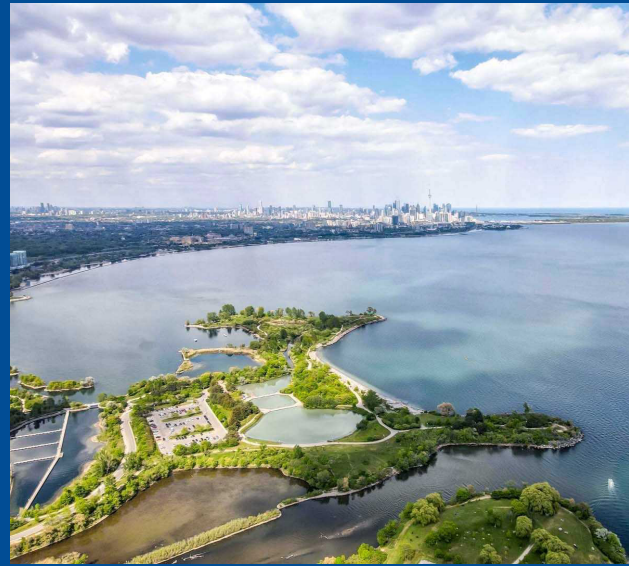
Grocery



Gas Station

HoodQ

Disclaimer: These materials have been prepared for shawn@hoodq.com and are not intended to solicit buyers or sellers currently under contract with a brokerage. By accessing this information you have agreed to our terms of service, which are hereby incorporated by reference. This information may contain errors and omissions. You are not permitted to rely on the contents of this information and must take steps to independently verify its contents with the appropriate authorities (school boards, governments etc.). As a recipient of this information, you agree not to hold us, our licensors or the owners of the information liable for any damages, howsoever caused.



## \*\*\*AMAZING TWO-STORY LOFT IN THE AMAZING MYSTIC POINT\*\*\*

This Condo Is Ready For You To Move In And Fall In Love. It Has A Wonderful Open Concept Layout With Floor To Ceiling Windows Spanning 2 Full Floors! The Open Staircase Gives You Even More Of A View With No Obstructions. There Is A Full Balcony To Enjoy The Summer Nights, A Renovated Ensuite, Newer Flooring And So Many Other Amazing Features. Wait Till You See The Amenities And The Grounds, They Are 10+

Extras: All Electric Light Fixtures, All Window Coverings, All Existing Appliances: Samsung Stainless Steel French Door Fridge, Whirlpool Stainless Steel Built-In Microwave, Bosch Stainless Steel Built-In Dishwasher, Whirlpool Stainless Steel Flat Top Slide-In Stove, LG White Washer and Dryer, Ecobee Thermostat, Hardwood Floors, Parking, Locker And All Other Permanent Fixtures.

Taxes: \$1,979.68/2021 Maintenance Fee: \$710.97/month

Royal LePage Your Community Realty Brokerage does not warrant or guarantee the information in this feature sheet.