

WELCOME TO

146 Lacewood Dr

www.146Lacewood.com



ROYAL LEPAGE
CHAIRMAN'S CLUB
NATIONAL TOP 1%
2012-2020

Shawn Zigelstein
Broker

TEAM **ZOLD**

Your Home • Your Life • Your Realtors

Working For You!

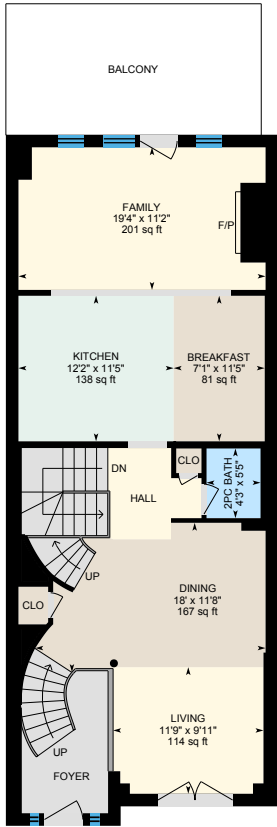
905.731.2000
www.teamzold.com

YOUR **Community**
REALTY™

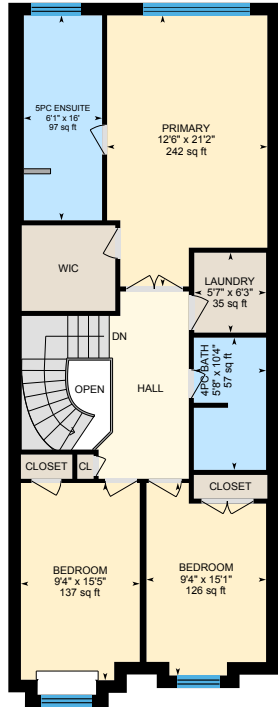


BROKERAGE INDEPENDENTLY OWNED & OPERATED

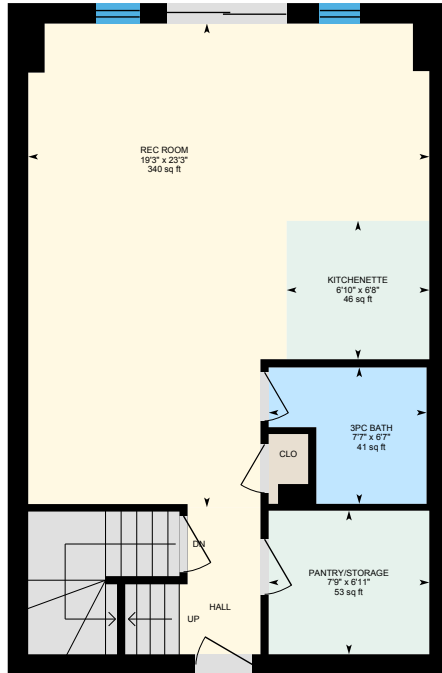
146 Lacewood Drive, Richmond Hill



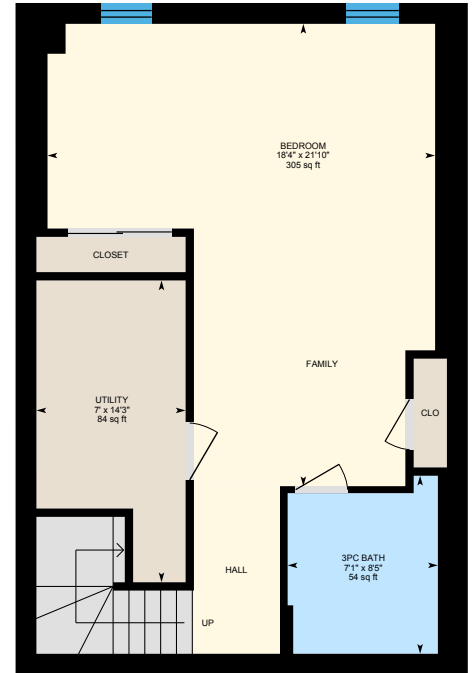
Main Floor



2nd Floor



Walk Out Basement (Below Grade)



Basement (Below Grade)





PUBLIC SCHOOLS

Your neighbourhood is part of a community of Public Schools offering Elementary, Middle, and High School programming.

Trillium Woods PS

Designated Catchment School
Grades PK to 8
18 Alamo Heights Dr

Michaëlle Jean PS

Designated Catchment School
Grades 1 to 3
320 Shirley Dr

Richmond Hill HS

Designated Catchment School
Grades 9 to 12
201 Yorkland St

Beverley Acres PS

Designated Catchment School
Grades 4 to 8
283 Neal Dr

Académie de la Moraine

Designated Catchment School
Grades PK to 6
115 George St

ÉS Norval-Morrisseau

Designated Catchment School
Grades 7 to 12
51 Wright St

ALTERNATIVE & SPECIAL SCHOOLS

Nearby alternative and special education schools include:

YRDSB Continuing Education

Grades 9 to 12
11160 Yonge St

Dr. Bette Stephenson Centre for Learning

Grades 9 to 12, Adult
36 Regatta Ave



CATHOLIC SCHOOLS

Your neighbourhood is part of a community of Catholic Schools offering Elementary, Middle, and High School programming.

Father Henri Nouwen Catholic ES

Grades PK to 8 (Assigned)
121 Larratt Ln

ÉEC Le-Petit-Prince

Grades PK to 6 (Assigned)
79 Avro Rd

St Theresa of Lisieux Catholic HS

Grades 9 to 12 (Assigned)
230 Shaftsbury Ave

ÉSC Renaissance

Grades 7 to 12 (Assigned)
700 Bloomington Rd

PRIVATE SCHOOLS

The private schools nearest to you are:



Century Private School

Grades PK to 12
11181 Yonge St

Richland Academy

Grades PK to 8
11570 Yonge St

Alpha Star High School

Grades 9 to 12
10670 Yonge St

Holy Trinity Private School

Grades PK to 12
11300 Bayview Ave

PARKS & REC.

This home is located in park heaven, with 4 parks and 9 recreation facilities within a 20 minute walk from this address.



Rouge Crest Park

147 Rothbury Road
5 min



Alias Grace Park

11 Courtney Cres
5 min



Melinda Clarke Parkette

45 Royal Chapin Crescent
6 min

FACILITIES WITHIN A 20 MINUTE WALK

4 Playgrounds 1 Sports Field
1 Basketball Court 1 Splash Pad
1 Trail 1 Picnic Facilities

TRANSIT

Public transit is at this home's doorstep for easy travel around the city. The nearest street transit stop is only a 3 minute walk away and the nearest rail transit stop is a 46 minute walk away.

Nearest Rail Transit Stop
Richmond Hill GO

Nearest Street Level Transit Stop
Yonge St Stop # 5094 3 min

SAFETY

With safety facilities in the area, help is always close by. Facilities near this home include a fire station, a hospital, and a police station within 3.59km.

Mackenzie Richmond Hill Hospital
10 Trench St

Fire Station
101 Gamble Road

Police Station
171 Major Mackenzie Drive West

CONVENIENCE

This home is located near everyday amenities to make your daily errands easier.

Coffee **Gym**
 Grocery **Gas Station**

HoodQ

Disclaimer: These materials have been prepared for shawn@easymold.com and are not intended to solicit buyers or sellers currently under contract with a brokerage. By accessing this information you have agreed to our terms of service, which are hereby incorporated by reference. This information may contain errors and omissions. You are not permitted to rely on the contents of this information and must take steps to independently verify its contents with the appropriate authorities (school boards, governments etc.). As a recipient of this information, you agree not to hold us, our licensors or the owners of the information liable for any damages, howsoever caused.

WELCOME HOME TO THE ENCLAVE AT FORESTBROOK BY HEATHWOOD HOMES

One Of The 54 Luxury Homes Built, This Home Is A Must See With Some Spectacular Upgrades And A Designer Like Décor Unlike Anything Else In The Area. Wait Unit You See How The Flow Of This Home Is Perfect For You To Just Move In And Enjoy. This Executive Home Features A Protected Ravine Behind For Total Privacy. The Yard Is Amazing With A Deck And Patio To Enjoy The Birds Chirping And Wonderful Sunsets.

This Home Has A Separate Entrance Through The Garage That Could Enable The Lower Level And Basement To Be Used As A Totally Separate In-Law Suite. Way Too Many Upgrades To List In One Place, You Have To Come And See The Amount Of Living Space This Home Has. One Of The Largest In The Complex, Just Pack Your Bags And Move In.

Close To Parks, Trails, Schools, Shopping, Golf And Transit.

Extras: All Electrical Light Fixtures, All Existing Appliances: Samsung Stainless Steel French Door Fridge, KitchenAid Stainless Steel Flat Top Stove With Double Oven, Panasonic Stainless Steel Built-In Microwave Hood Fan, KitchenAid Stainless Steel Built-In Dishwasher; Electrolux Grey Washer & Dryer, Frigidaire White Freezer in Basement, Whirlpool White Fridge in Basement, Cooktop in Basement, Furnace, A/C, Garage Door Opener & Remote, CVAC and all attachments, HEPPA Filter (as is), Alarm System & 2 Cameras (to be assumed), RING doorbell, Awning in the backyard, Gas line for BBQ.

Rental: Hot Water Tank.

Lot: 22.34 ft x 117.42 ft Taxes: \$4,992.79/ 2021

Royal LePage Your Community Realty Brokerage does not warrant or guarantee the information in this feature sheet.

