

WELCOME TO

# 138 Olive Avenue

[www.138Olive.com](http://www.138Olive.com)



**Sarah Norris**  
Sales Representative



TEAM **ZOLD**

Your Home • Your Life • Your Realtors

*Working For You!*

905.731.2000  
[www.teamzold.com](http://www.teamzold.com)



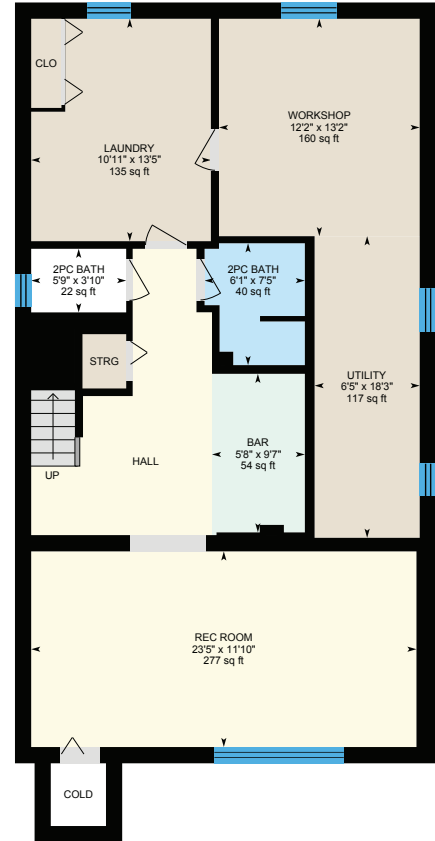
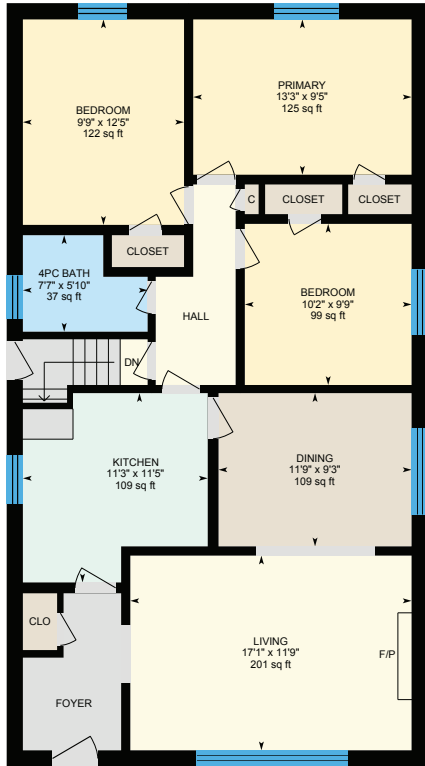
ROYAL LEPAGE  
**CHAIRMAN'S CLUB**  
NATIONAL TOP 1%  
LIFETIME MEMBER



**Shawn Zigelstein**  
Broker



# 138 Olive Avenue, Toronto









## PUBLIC SCHOOLS

Your neighbourhood is part of a community of Public Schools offering Elementary, Middle, and High School programming.

### Finch Public School

Designated Catchment School  
Grades PK to 5  
277 Finch Ave E

### É Éléonore Paul-Demers

Designated Catchment School  
Grades PK to 6  
100 Ravel Rd

### Cummer Valley Middle School

Designated Catchment School  
Grades 6 to 8  
70 Maxome Ave

### Earl Haig Secondary School

Designated Catchment School  
Grades 9 to 12  
100 Princess Ave

### ÉS Étienne-Brûlé

Designated Catchment School  
Grades 7 to 12  
300 Banbury Rd

### Other Local Schools

#### Claude Watson School for the Arts

Grades 4 to 8  
130 Doris Ave

## ALTERNATIVE & SPECIAL SCHOOLS

Nearby alternative and special education schools include:

### Avondale Secondary Alternative School

Grades 9 to 12  
24 Silverview Drive

### Drewry Secondary School

Grades 9 to 12  
70 Drewry Ave



## CATHOLIC SCHOOLS

Your neighbourhood is part of a community of Catholic Schools offering Elementary, Middle, and High School programming.

### Blessed Trinity Catholic School

Grades PK to 8 (Assigned)  
3205 Bayview Ave

### ÉÉC Sainte-Madeleine

Grades PK to 6 (Assigned)  
1 Ness Dr

### ÉSC Monseigneur-de-Charbonnel

Grades 7 to 12 (Assigned)  
110 Drewry Ave

### St. Cyril Catholic School

Grades PK to 8  
18 Kempford Blvd

## PRIVATE SCHOOLS

The private schools nearest to you are:



### Apollo High School

Grades 9 to 12  
5467 Yonge St

### Drewry Academy

Grades 9 to 12  
24 Drewry Ave

### Unionville Academy

Grades 9 to 12  
24 Drewry Ave

### St. George Academy

Grades 9 to 12  
77 Finch Avenue West

## PARKS & REC.

This home is located in park heaven, with 4 parks and 5 recreation facilities within a 20 minute walk from this address.



### Pemberton Parkette

89 Pemberton Ave



4 min



### Bishop Park

45 Bishop Ave



7 min



### Bishop Allotment Gardens

190 Bishop Ave.



7 min

### FACILITIES WITHIN A 20 MINUTE WALK

3 Playgrounds      1 Trail  
1 Community Garden



## TRANSIT

Public transit is at this home's doorstep for easy travel around the city. The nearest street transit stop is only a 2 minute walk away and the nearest rail transit stop is a 10 minute walk away.



### Nearest Rail Transit Stop

Finch Station



10 min



### Nearest Street Level Transit Stop

Finch Ave East At Willowdale Ave



2 min

## SAFETY

With safety facilities in the area, help is always close by. Facilities near this home include a fire station, a police station, and a hospital within 3.54km.



### North York General Hospital

4001 Leslie St



### Fire Station

12 Canterbury Pl



### Police Station

30 Ellerslie Ave

## CONVENIENCE

This home is located near everyday amenities to make your daily errands easier.



### Coffee



### Gym



### Grocery



### Gas Station



HoodQ

Disclaimer: These materials have been prepared for shawn@hoodq.com and are not intended to solicit buyers or sellers currently under contract with a brokerage. By accessing this information you have agreed to our terms of service, which are hereby incorporated by reference. This information may contain errors and omissions. You are not permitted to rely on the contents of this information and must take steps to independently verify its contents with the appropriate authorities (school boards, governments etc.). As a recipient of this information, you agree not to hold us, our licensors or the owners of the information liable for any damages, howsoever caused.

## \*\*EXCEPTIONAL 3 BED 2 BATH ALL-BRICK BUNGALOW IN WILLOWDALE\*\*

Location! Location! Location!! Close To Yonge St. And Finch Subway

Well Maintained, The 45Ft X 160 ft Lot It Is The Perfect Property To Rebuild, Renovate, Or Just Move Right In! The Main Floor Includes An Eat-In Kitchen, Open Concept Living/Dining Area, And 3 Large Bedrooms With Original Hardwood Floors. Basement Including Rec Room, Laundry & Workshop. Close To Best Schools, Parks, Shopping, Restaurants, Theatre, 401, More!

This Home Is Waiting For You And Your Family.

Extras:

All Existing Appliances: Stainless Steel Whirlpool Stove, Maytag Built-In Dishwasher, Beaumark Refrigerator; White Maytag Dryer And White Whirlpool Washer; All Electrical Light Fixtures (Unless Excluded), All Window Coverings, Cedar Closet In Basement, Shelving In Basement/Work Room/Utility Room, Ample Shelving In Garage, Tiki Bar, Furnace, A/C.

Excluded: Dining Room Chandelier. Rental: Hot Water Tank

Lot: 45 ft x 160 ft | Taxes: \$7,533.79 / 2021